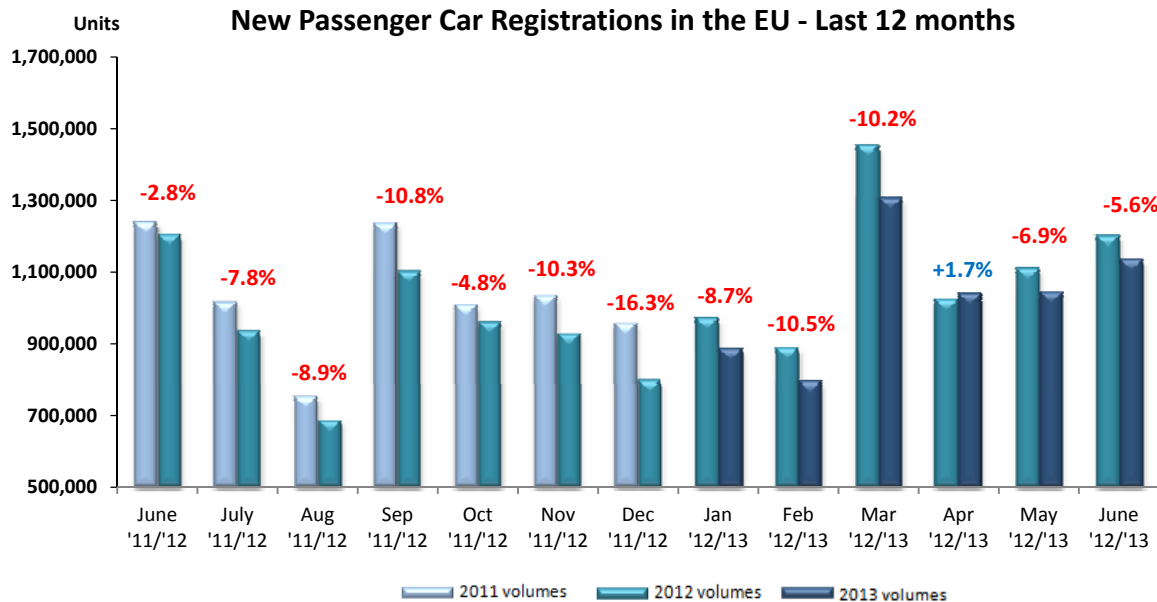


New Passenger Car Registrations *European Union*



Not adjusted for working days

PASSENGER CAR registrations: -6.6% over six months; -5.6% in June

In June, new passenger car registrations totaled 1,134,042 units, declining by 5.6% compared to the same month last year. **In the first half year of 2013**, 6,204,990 new cars were registered in the EU*, or 6.6% less than in the first six months of 2012.

In June, the UK was the only major market to expand (+13.4%), while the Spanish slipped by 0.7% and the German (-4.7%), Italian (-5.5%) and French (-8.4%) contracted. Total new registrations in the EU* amounted to 1,134,042 units, or the lowest level recorded since 1996.

From January to June, except for the UK which expanded by 10.0%, all other major markets faced a downturn ranging from -4.9% in Spain to -8.1% in Germany, -10.3% in Italy and -11.2% in France. Overall, demand for new cars reached 6,204,990 units in the first semester of this year and decreased by 6.6% compared to the first half year of 2012.

* EU27, data for Malta unavailable



ACEA

Association des
Constructeurs
Européens
d'Automobiles

Press Release

**PRESS EMBARGO FOR ALL DATA :
8.00 A.M.(6.00 A.M GMT), July 16, 2013**

Av. des Nerviens 85
B-1040 Bruxelles
Tel (32 2) 732 55 50
Fax (32 2) 738 73 10
(32 2) 738 73 11

PROVISIONAL NEW PASSENGER CAR REGISTRATIONS BY MARKET EUROPEAN UNION*

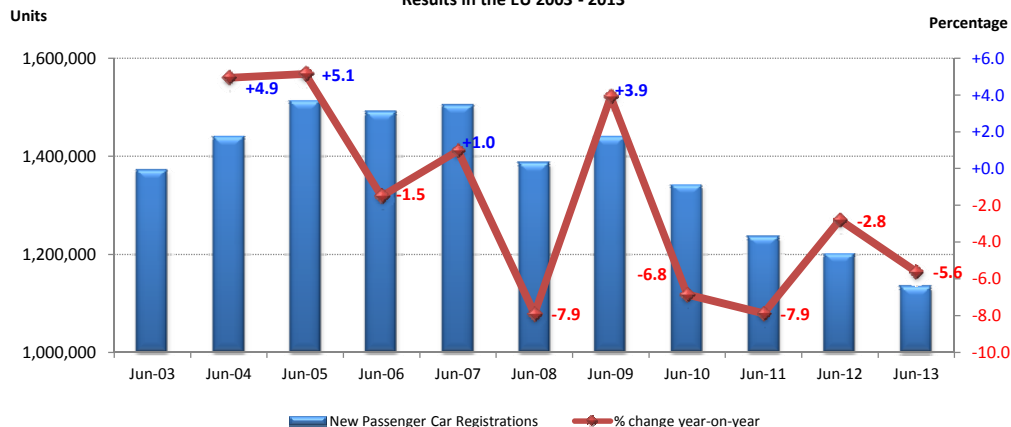
16/7/13

	June '13	June '12	% Chg 13/12	Jan - Jun '13	Jan - Jun '12	% Chg 13/12
AUSTRIA	31,279	33,068	-5.4	171,204	186,958	-8.4
BELGIUM	43,158	47,647	-9.4	289,873	285,116	+1.7
BULGARIA	1,944	2,135	-8.9	8,971	9,770	-8.2
CYPRUS	616	978	-37.0	3,679	6,426	-42.7
CZECH REPUBLIC	14,482	18,140	-20.2	80,818	94,233	-14.2
DENMARK	17,550	14,727	+19.2	91,959	84,333	+9.0
ESTONIA	1,694	1,642	+3.2	10,282	8,923	+15.2
FINLAND	8,809	7,723	+14.1	56,548	66,934	-15.5
FRANCE	191,355	208,909	-8.4	931,476	1,048,982	-11.2
GERMANY	282,913	296,722	-4.7	1,502,630	1,634,401	-8.1
GREECE	5,648	5,527	+2.2	30,364	32,431	-6.4
HUNGARY	4,975	4,956	+0.4	27,160	27,785	-2.2
IRELAND	1,673	6,352	-73.7	53,230	66,718	-20.2
ITALY	122,008	129,118	-5.5	731,203	815,213	-10.3
LATVIA	1,027	1,050	-2.2	5,137	5,462	-6.0
LITHUANIA	1,121	1,048	+7.0	6,007	6,202	-3.1
LUXEMBURG	4,320	4,939	-12.5	26,409	28,656	-7.8
NETHERLANDS	35,285	76,118	-53.6	211,910	331,358	-36.0
POLAND	25,203	23,329	+8.0	147,487	148,710	-0.8
PORTUGAL	12,706	10,803	+17.6	54,945	53,375	+2.9
ROMANIA	3,967	7,326	-45.9	24,549	33,343	-26.4
SLOVAKIA	5,872	5,976	-1.7	32,044	34,316	-6.6
SLOVENIA	5,845	4,980	+17.4	28,229	28,327	-0.3
SPAIN	72,766	73,259	-0.7	386,353	406,071	-4.9
SWEDEN	22,869	25,562	-10.5	128,900	142,633	-9.6
UNITED KINGDOM	214,957	189,514	+13.4	1,163,623	1,057,680	+10.0
EUROPEAN UNION (EU27)*	1,134,042	1,201,548	-5.6	6,204,990	6,644,356	-6.6
EU15	1,067,296	1,129,988	-5.5	5,830,627	6,240,859	-6.6
EU11*	66,746	71,560	-6.7	374,363	403,497	-7.2
ICELAND	1,468	1,516	-3.2	4,804	4,854	-1.0
NORWAY	10,948	11,053	-0.9	70,644	69,355	+1.9
SWITZERLAND	28,905	39,905	-27.6	156,305	177,310	-11.8
EFTA	41,321	52,474	-21.3	231,753	251,519	-7.9
EU27*+EFTA	1,175,363	1,254,022	-6.3	6,436,743	6,895,875	-6.7
EU15+EFTA	1,108,617	1,182,462	-6.2	6,062,380	6,492,378	-6.6

(*) data for Malta currently not available.

For further information, please contact: Ms. Quynh-Nhu Huynh - Director Economics & Statistics - E-mail: qh@acea.be - Tel. (32) 2 738 73 55

New Passenger Car Registrations in June
Results in the EU 2003 - 2013



Next press release: Tuesday, September 17, 2013

This information is available on the ACEA website: <http://www.acea.be>



ACEA

Press Release

PROVISIONAL

NEW PASSENGER CAR REGISTRATIONS BY MANUFACTURER EUROPEAN UNION (EU)*

16/7/13

	June					January - Jun				
	%Share		Units	Units	% Chg	%Share		Units	Units	% Chg
	'13	'12	'13	'12	13/12	'13	'12	'13	'12	13/12
ALL BRANDS**			1,134,042	1,201,548	-5.6			6,204,990	6,644,356	-6.6
VW Group	24.3	23.7	275,663	285,237	-3.4	24.8	23.9	1,536,477	1,590,236	-3.4
VOLKSWAGEN	12.3	12.3	139,420	147,954	-5.8	12.5	12.6	775,802	838,067	-7.4
AUDI	5.4	5.5	61,175	66,632	-8.2	5.6	5.4	349,534	362,060	-3.5
SEAT	2.4	2.0	26,830	23,923	+12.2	2.4	2.0	147,487	133,717	+10.3
SKODA	3.9	3.9	44,168	46,509	-5.0	3.9	3.8	239,982	255,060	-5.9
Others (1)	0.4	0.0	4,070	219	+1758.4	0.4	0.0	23,672	1,332	+1677.2
PSA Group	11.6	12.3	131,531	147,490	-10.8	11.3	12.2	700,928	808,477	-13.3
PEUGEOT	6.2	6.5	70,684	77,959	-9.3	6.2	6.5	383,501	432,149	-11.3
CITROEN	5.4	5.8	60,847	69,531	-12.5	5.1	5.7	317,427	376,328	-15.7
RENAULT Group	10.1	9.4	114,042	112,616	+1.3	8.8	8.6	545,394	571,120	-4.5
RENAULT	7.6	7.4	85,679	88,381	-3.1	6.5	6.8	404,116	450,991	-10.4
DACIA	2.5	2.0	28,363	24,235	+17.0	2.3	1.8	141,278	120,129	+17.6
GM Group	8.5	8.9	96,517	107,101	-9.9	8.0	8.4	499,055	560,914	-11.0
OPEL/VAUXHALL	7.2	7.3	82,138	88,200	-6.9	6.9	6.9	426,895	457,790	-6.7
CHEVROLET	1.3	1.6	14,365	18,876	-23.9	1.2	1.5	72,045	102,945	-30.0
GM (US)	0.0	0.0	14	25	-44.0	0.0	0.0	115	179	-35.8
FORD	7.8	6.8	87,894	81,323	+8.1	7.5	7.8	465,922	515,249	-9.6
FIAT Group	6.0	6.4	67,477	77,217	-12.6	6.5	6.7	400,611	445,255	-10.0
FIAT	4.7	4.7	53,382	56,497	-5.5	5.0	4.8	312,541	321,761	-2.9
LANCIA/CHRYSLER	0.6	0.8	6,355	9,481	-33.0	0.7	0.8	40,626	55,379	-26.6
ALFA ROMEO	0.5	0.7	5,653	8,605	-34.3	0.6	0.8	34,954	52,221	-33.1
JEEP	0.2	0.2	1,712	2,304	-25.7	0.2	0.2	10,427	13,656	-23.6
Others (2)	0.0	0.0	375	330	+13.6	0.0	0.0	2,063	2,238	-7.8
BMW Group	6.5	6.6	73,396	79,722	-7.9	6.3	6.1	390,720	405,301	-3.6
BMW	5.1	5.2	57,349	62,275	-7.9	5.1	4.9	314,365	324,060	-3.0
MINI	1.4	1.5	16,047	17,447	-8.0	1.2	1.2	76,355	81,241	-6.0
DAIMLER	5.5	5.2	62,792	62,010	+1.3	5.5	5.1	343,974	336,836	+2.1
MERCEDES	5.0	4.6	56,995	55,492	+2.7	5.0	4.5	308,627	298,072	+3.5
SMART	0.5	0.5	5,797	6,518	-11.1	0.6	0.6	35,347	38,764	-8.8
TOYOTA Group	3.9	3.9	44,067	46,581	-5.4	4.1	4.2	254,713	277,184	-8.1
TOYOTA	3.7	3.7	42,373	44,110	-3.9	3.9	3.9	244,879	262,447	-6.7
LEXUS	0.1	0.2	1,694	2,471	-31.4	0.2	0.2	9,834	14,737	-33.3
NISSAN	3.3	3.6	37,784	42,984	-12.1	3.5	3.5	219,137	231,145	-5.2
HYUNDAI	3.5	3.5	39,499	42,560	-7.2	3.5	3.3	215,585	222,116	-2.9
KIA	2.8	2.7	31,261	32,367	-3.4	2.8	2.5	171,047	168,938	+1.2
VOLVO CAR CORP.	1.6	1.7	18,075	20,610	-12.3	1.7	1.7	102,567	115,078	-10.9
HONDA	1.1	1.1	11,978	13,448	-10.9	1.2	1.0	72,979	68,610	+6.4
SUZUKI	1.1	1.1	12,120	13,679	-11.4	1.2	1.2	71,915	81,033	-11.3
JAGUAR LAND ROVER	0.9	0.9	10,634	10,469	+1.6	1.2	1.0	71,775	64,518	+11.2
LAND ROVER	0.7	0.7	8,427	8,322	+1.3	0.9	0.8	57,502	52,161	+10.2
JAGUAR	0.2	0.2	2,207	2,147	+2.8	0.2	0.2	14,273	12,357	+15.5
MAZDA	1.1	1.0	12,356	11,891	+3.9	1.1	1.0	67,598	65,481	+3.2
MITSUBISHI	0.4	0.4	4,898	5,214	-6.1	0.5	0.6	33,319	38,936	-14.4
OTHER**	0.2	0.8	2,058	9,029	-77.2	0.7	1.2	41,274	77,929	-47.0

(1) VW Group: VW 'other' include Bentley, Bugatti, Lamborghini, and since Aug '12 Porsche

(2) FIAT Group: FIAT 'other' include Dodge, Ferrari, Maserati

(*) data for Malta n.a.

(**) ACEA estimates

For further information, please contact:

Ms. Quynh-Nhu Huynh - Director Economics & Statistics

E-mail: qh@acea.be - Tel. (32) 2 738 73 55

P r e s s R e l e a s e

P R O V I S I O N A L

NEW PASSENGER CAR REGISTRATIONS BY MANUFACTURER

EU* + EFTA Countries

16/7/13

	June					January - Jun				
	%Share		Units	Units	% Chg	%Share		Units	Units	% Chg
	'13	'12	'13	'12	13/12	'13	'12	'13	'12	13/12
ALL BRANDS**			1,175,363	1,254,022	-6.3			6,436,743	6,895,875	-6.7
VW Group	24.4	23.9	286,904	300,058	-4.4	24.8	24.1	1,598,768	1,659,780	-3.7
VOLKSWAGEN	12.3	12.4	144,926	155,187	-6.6	12.5	12.7	805,745	872,609	-7.7
AUDI	5.4	5.6	63,565	69,784	-8.9	5.7	5.5	363,997	377,781	-3.6
SEAT	2.4	2.0	27,767	25,086	+10.7	2.4	2.0	151,836	138,747	+9.4
SKODA	3.9	4.0	46,302	49,732	-6.9	3.9	3.9	251,899	269,140	-6.4
Others (1)	0.4	0.0	4,344	269	+1514.9	0.4	0.0	25,291	1,503	+1582.7
PSA Group	11.5	12.1	134,651	151,195	-10.9	11.1	12.0	716,739	827,033	-13.3
PEUGEOT	6.2	6.4	72,326	80,040	-9.6	6.1	6.4	392,449	442,351	-11.3
CITROEN	5.3	5.7	62,325	71,155	-12.4	5.0	5.6	324,290	384,682	-15.7
RENAULT Group	9.9	9.2	116,087	115,029	+0.9	8.6	8.5	555,467	583,193	-4.8
RENAULT	7.4	7.2	87,243	90,244	-3.3	6.4	6.7	411,211	460,153	-10.6
DACIA	2.5	2.0	28,844	24,785	+16.4	2.2	1.8	144,256	123,040	+17.2
GM Group	8.4	8.8	98,951	109,868	-9.9	7.9	8.3	511,247	573,618	-10.9
OPEL/VAUXHALL	7.1	7.2	83,883	90,365	-7.2	6.8	6.8	436,493	468,298	-6.8
CHEVROLET	1.3	1.6	15,007	19,442	-22.8	1.2	1.5	74,523	105,038	-29.1
GM (US)	0.0	0.0	61	61	+0.0	0.0	0.0	231	282	-18.1
FORD	7.7	6.8	90,629	84,795	+6.9	7.4	7.7	478,584	531,087	-9.9
FIAT Group	5.9	6.4	69,027	79,892	-13.6	6.4	6.6	409,142	456,060	-10.3
FIAT	4.6	4.6	54,351	57,798	-6.0	4.9	4.8	318,065	327,580	-2.9
LANCIA/CHRYSLER	0.6	0.8	6,478	9,695	-33.2	0.6	0.8	41,132	56,100	-26.7
ALFA ROMEO	0.5	0.7	5,902	8,954	-34.1	0.6	0.8	36,170	54,059	-33.1
JEEP	0.2	0.2	1,850	2,724	-32.1	0.2	0.2	11,317	15,169	-25.4
Others (2)	0.0	0.1	446	721	-38.1	0.0	0.0	2,458	3,152	-22.0
BMW Group	6.5	6.6	76,463	82,860	-7.7	6.3	6.1	407,275	421,480	-3.4
BMW	5.1	5.2	59,867	64,878	-7.7	5.1	4.9	328,057	337,335	-2.8
MINI	1.4	1.4	16,596	17,982	-7.7	1.2	1.2	79,218	84,145	-5.9
DAIMLER	5.5	5.1	64,839	64,466	+0.6	5.5	5.1	356,560	349,312	+2.1
MERCEDES	5.0	4.6	58,866	57,730	+2.0	5.0	4.5	320,359	309,544	+3.5
SMART	0.5	0.5	5,973	6,736	-11.3	0.6	0.6	36,201	39,768	-9.0
TOYOTA Group	4.0	4.0	46,819	49,758	-5.9	4.2	4.3	271,387	294,831	-8.0
TOYOTA	3.8	3.8	45,031	47,162	-4.5	4.1	4.0	261,003	279,262	-6.5
LEXUS	0.2	0.2	1,788	2,596	-31.1	0.2	0.2	10,384	15,569	-33.3
NISSAN	3.3	3.5	38,986	44,335	-12.1	3.5	3.5	226,829	239,373	-5.2
HYUNDAI	3.5	3.6	41,027	44,710	-8.2	3.5	3.4	223,594	231,997	-3.6
KIA	2.7	2.7	32,309	33,699	-4.1	2.7	2.5	175,453	173,232	+1.3
VOLVO CAR CORP.	1.6	1.8	19,264	22,477	-14.3	1.7	1.8	111,850	125,540	-10.9
HONDA	1.1	1.1	12,645	14,144	-10.6	1.2	1.1	78,077	72,555	+7.6
SUZUKI	1.1	1.2	12,974	15,033	-13.7	1.2	1.2	77,224	86,177	-10.4
MAZDA	1.1	1.1	13,228	13,369	-1.1	1.2	1.0	74,419	70,581	+5.4
JAGUAR LAND ROVER	0.9	0.9	10,969	10,869	+0.9	1.2	1.0	74,130	66,829	+10.9
LAND ROVER	0.7	0.7	8,669	8,673	-0.0	0.9	0.8	59,306	54,239	+9.3
JAGUAR	0.2	0.2	2,300	2,196	+4.7	0.2	0.2	14,824	12,590	+17.7
MITSUBISHI	0.5	0.5	5,959	6,196	-3.8	0.6	0.6	39,078	44,010	-11.2
OTHER**	0.3	0.9	3,632	11,269	-67.8	0.8	1.3	50,919	89,187	-42.9

(1) VW Group: VW 'other' include Bentley, Bugatti, Lamborghini, and since Aug '12 Porsche

(2) FIAT Group: FIAT 'other' include Dodge, Ferrari, Maserati

(*) data for Malta n.a.

(**) ACEA estimates

For further information, please contact:

Ms. Quynh-Nhu Huynh - Director Economics & Statistics

E-mail: qh@acea.be - Tel. (32) 2 738 73 55



ACEA

Press Release

PROVISIONAL

NEW PASSENGER CAR REGISTRATIONS BY MANUFACTURER WESTERN EUROPE (EU15 + EFTA Countries)

16/7/13

	June					January - Jun				
	%Share		Units	Units	% Chg	%Share		Units	Units	% Chg
	'13	'12	'13	'12	13/12	'13	'12	'13	'12	13/12
ALL BRANDS**			1,108,617	1,182,462	-6.2			6,062,380	6,492,378	-6.6
VW Group	24.2	23.6	268,312	278,983	-3.8	24.6	23.7	1,489,956	1,541,153	-3.3
VOLKSWAGEN	12.5	12.5	138,716	148,386	-6.5	12.7	12.9	767,965	835,139	-8.0
AUDI	5.6	5.8	62,032	68,035	-8.8	5.9	5.7	355,344	368,796	-3.6
SEAT	2.4	2.0	26,959	24,188	+11.5	2.4	2.1	147,790	133,614	+10.6
SKODA	3.3	3.2	36,383	38,113	-4.5	3.2	3.1	194,266	202,158	-3.9
Other(1)	0.4	0.0	4,222	261	+1517.6	0.4	0.0	24,591	1,446	+1600.6
PSA Group	11.7	12.3	129,215	145,825	-11.4	11.3	12.3	686,031	796,238	-13.8
PEUGEOT	6.2	6.5	69,283	76,879	-9.9	6.2	6.5	374,909	424,802	-11.7
CITROEN	5.4	5.8	59,932	68,946	-13.1	5.1	5.7	311,122	371,436	-16.2
RENAULT Group	9.7	9.0	107,137	106,858	+0.3	8.5	8.3	513,898	538,107	-4.5
RENAULT	7.5	7.2	82,834	85,699	-3.3	6.4	6.7	390,640	435,266	-10.3
DACIA	2.2	1.8	24,303	21,159	+14.9	2.0	1.6	123,258	102,841	+19.9
GM Group	8.3	8.8	92,228	103,877	-11.2	7.9	8.3	479,561	538,996	-11.0
OPEL/VAUXHALL	7.1	7.3	79,030	86,249	-8.4	6.8	6.9	414,804	446,428	-7.1
CHEVROLET	1.2	1.5	13,137	17,571	-25.2	1.1	1.4	64,541	92,306	-30.1
GM (US)	0.0	0.0	61	57	+7.0	0.0	0.0	216	262	-17.6
FORD	7.8	6.8	86,231	80,202	+7.5	7.5	7.8	455,622	504,295	-9.7
FIAT Group	6.0	6.5	66,966	76,990	-13.0	6.5	6.8	396,613	439,870	-9.8
FIAT	4.8	4.7	52,736	55,500	-5.0	5.1	4.8	308,005	314,693	-2.1
LANCIA/CHRYSLER	0.6	0.8	6,369	9,504	-33.0	0.7	0.8	40,477	55,167	-26.6
ALFA ROMEO	0.5	0.7	5,673	8,692	-34.7	0.6	0.8	35,175	52,554	-33.1
JEEP	0.2	0.2	1,720	2,530	-32.0	0.2	0.2	10,362	14,135	-26.7
Other (2)	0.0	0.1	468	764	-38.7	0.0	0.1	2,594	3,321	-21.9
BMW Group	6.7	6.8	74,435	80,889	-8.0	6.5	6.3	397,072	410,718	-3.3
BMW	5.2	5.3	58,001	63,090	-8.1	5.3	5.0	318,794	327,632	-2.7
MINI	1.5	1.5	16,434	17,799	-7.7	1.3	1.3	78,278	83,086	-5.8
DAIMLER	5.7	5.3	63,346	63,095	+0.4	5.8	5.3	348,898	342,222	+2.0
MERCEDES	5.2	4.8	57,397	56,376	+1.8	5.2	4.7	312,786	302,546	+3.4
SMART	0.5	0.6	5,949	6,719	-11.5	0.6	0.6	36,112	39,676	-9.0
TOYOTA Group	3.9	3.9	43,072	46,230	-6.8	4.1	4.2	248,948	272,993	-8.8
TOYOTA	3.7	3.7	41,405	43,810	-5.5	3.9	4.0	239,284	258,224	-7.3
LEXUS	0.2	0.2	1,667	2,420	-31.1	0.2	0.2	9,664	14,769	-34.6
NISSAN	3.3	3.6	36,957	41,996	-12.0	3.5	3.5	214,341	225,081	-4.8
HYUNDAI	3.3	3.4	36,491	40,254	-9.3	3.3	3.2	199,701	207,699	-3.9
KIA	2.6	2.5	28,391	29,109	-2.5	2.6	2.3	154,639	152,481	+1.4
VOLVO CAR CORP.	1.6	1.8	18,280	21,445	-14.8	1.8	1.8	107,243	119,886	-10.5
JAGUAR LAND ROV	1.0	0.9	10,740	10,665	+0.7	1.2	1.0	72,701	65,379	+11.2
LAND ROVER	0.8	0.7	8,479	8,509	-0.3	1.0	0.8	58,109	52,987	+9.7
JAGUAR	0.2	0.2	2,261	2,156	+4.9	0.2	0.2	14,592	12,392	+17.8
HONDA	1.0	1.1	11,388	12,735	-10.6	1.2	1.0	69,990	65,544	+6.8
MAZDA	1.1	1.1	12,389	12,675	-2.3	1.2	1.0	69,777	66,916	+4.3
SUZUKI	1.0	1.1	11,582	13,229	-12.4	1.1	1.2	68,561	76,827	-10.8
MITSUBISHI	0.5	0.5	5,370	5,581	-3.8	0.6	0.6	35,668	39,143	-8.9
OTHER**	0.5	1.0	6,087	11,824	-48.5	0.9	1.4	53,160	88,830	-40.2

(1) VW Group: VW 'other' include Bentley, Bugatti, Lamborghini, and since Aug '12 Porsche

(2) FIAT Group: FIAT 'other' include Dodge, Ferrari, Maserati

For further information, please contact:

Ms. Quynh-Nhu Huynh - Director Economics & Statistics

E-mail: qh@acea.be - Tel. (32) 2 738 73 55

(**) ACEA estimates