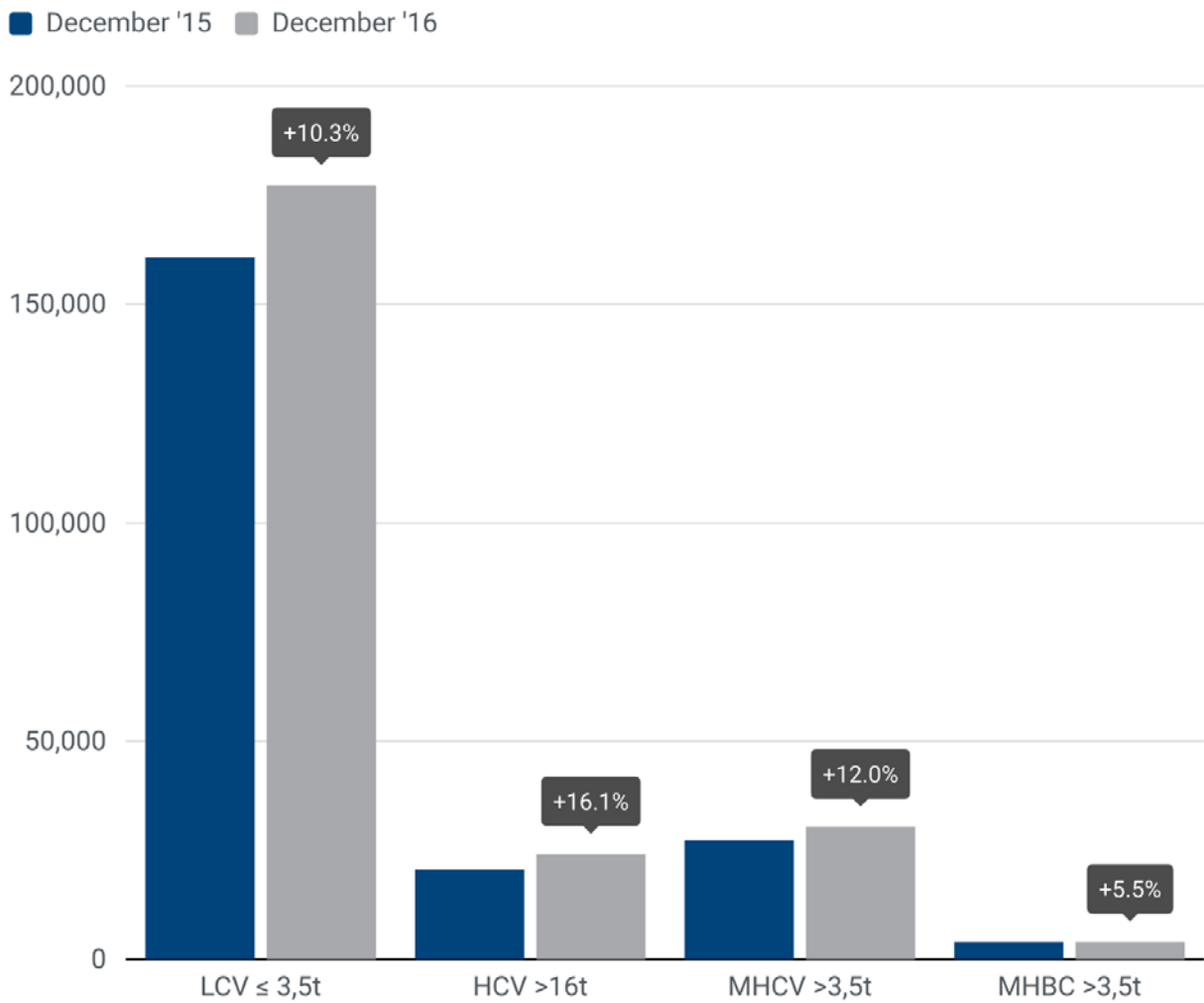


PRESS EMBARGO: 8.00 AM (7.00 AM GMT), 25 January 2017

**NEW COMMERCIAL VEHICLE REGISTRATIONS
EUROPEAN UNION¹
December 2016**



Next press release: Thursday 23 February 2017

¹ Data for Malta unavailable

Commercial vehicle registrations: +11.6% in 2016; +10.4% in December

Total new commercial vehicles

In December 2016, EU demand for new commercial vehicles increased yet again (+10.4%), totalling 211,941 units. Growth was sustained across all commercial vehicle segments. Italy ended the year extremely strong (+97.0%), with registrations almost doubling as a result of government incentives for fleet renewal that were introduced in September. Spain (+13.3%), Germany (+3.4%) and France (+2.9%) also posted growth, while the UK saw its demand decline during the last month of the year (-9.7%), mainly due to a drop in registrations of vans.

In 2016, the EU market showed consistent growth (+11.6%) and rose for the fourth year in a row, reaching 2,324,371 million commercial vehicles registered. Throughout the year, the five big markets performed better than in 2015. Italy (+49.9%) showed the most significant increase, followed by Spain (+11.3%), France (+8.3%), Germany (+7.0%) and the UK (+1.2%).

New light commercial vehicles (LCV) up to 3.5 tonnes²

In December 2016, new registrations of light commercial vehicles totalled 177,303 units, up (+10.3%) compared to December 2015. Demand was mainly driven by the Italian (+90.3%) and Spanish (+14.1%) markets with double-digit increases, while the German (+4.3%) and French (+3.3%) markets only saw modest growth. The United Kingdom, on the other hand, performed less well than in December 2015 (-10.4%).

Overall in 2016, nearly two million new vans were registered in the European Union, 11.9% more than the year before. Italy (+50.0%), Spain (+11.2%), Germany (+8.5%), France (+8.2%) and the UK (+1.0%) all contributed to this positive upturn.

New heavy commercial vehicles (HCV) over 16 tonnes³

December 2016 results show a significant surge in the heavy truck segment (+16.1%), with 24,044 new vehicles registered. The Italian market (+200.2%) saw spectacular growth, driven by government support for transport companies, although Italy's market is still below pre-crisis levels in volume terms. Germany (+8.8%), Spain (+6.6%) and France (+5.4%) followed with more modest increases, while the British market contracted by 9.1%.

In 2016, the market for new heavy trucks grew by 12.3%, reaching 292,170 units. All major markets made a positive contribution to the overall upturn, especially Italy (+52.9%) and France (+12.9%) with their double-digit increases.

New medium and heavy commercial vehicles (MHCV) over 3.5 tonnes⁴

In December 2016, new truck registrations in the EU totalled 30,428 units, up (+12.0%) compared to December 2015. Italy finished the year strongly (+193.0%) with registrations nearly tripling, while France (+4.3%), Germany (+1.3%) and Spain (+0.8%) saw more moderate growth rates at the end of 2016.

In 2016, 365,051 new trucks were registered in the European Union, 11.0% more than in the year before. Italy (+54.4%), France (+12.6%) and Spain (+10.1%) made particularly significant contributions to this growth.

New medium and heavy buses & coaches (MHBC) over 3.5 tonnes

In December 2016, new registrations of buses and coaches increased again (+5.5%) following a slowdown in the third quarter of the year, now totalling 4,210 units. Growth was mainly driven by Spain (+68.5%) and Italy (+57.4%), while France (-25.1%) and Germany (-1.7%) performed less well than in December 2015.

Overall in 2016, the EU market for buses and coaches only registered a moderate increase (+2.3%), counting 40,370 new vehicles. During the year, most growth came from Spain (+26.1%), Italy (+16.1%) and Germany (+8.9%), while France (-10.2%) saw demand decline. Noteworthy is the positive performance of the Dutch market (+144.2%).

² Including light buses and coaches

³ Excluding heavy buses and coaches

⁴ Excluding buses and coaches

P R E S S R E L E A S E

PRESS EMBARGO FOR ALL DATA :

8.00 AM (7.00 AM GMT), 25 January 2017

PROVISIONAL

EU+EFTA¹ COUNTRIES NEW REGISTRATION FIGURES BY MARKET NEW LIGHT COMMERCIAL VEHICLES up to 3.5t²

25/01/17

	December '16	December '15	% Change	Jan-Dec '16	Jan-Dec '15	% Change
AUSTRIA	2,536	2,588	-2.0%	35,919	32,862	9.3%
BELGIUM	4,893	4,385	11.6%	68,165	61,208	11.4%
BULGARIA ⁵	439	413	6.3%	4,890	4,553	7.4%
CROATIA	665	501	32.7%	8,173	6,695	22.1%
CYPRUS ⁵	178	124	43.5%	1,856	1,443	28.6%
CZECH REPUBLIC	1,816	1,922	-5.5%	19,239	17,131	12.3%
DENMARK	3,192	3,317	-3.8%	36,628	32,479	12.8%
ESTONIA	256	222	15.3%	3,919	3,582	9.4%
FINLAND	1,349	1,022	32.0%	13,519	11,431	18.3%
FRANCE	41,073	39,769	3.3%	408,545	377,741	8.2%
GERMANY	23,395	22,427	4.3%	258,021	237,902	8.5%
GREECE	404	574	-29.6%	5,623	5,653	-0.5%
HUNGARY	2,438	2,291	6.4%	21,331	17,515	21.8%
IRELAND	248	235	5.5%	28,246	23,829	18.5%
ITALY	27,850	14,637	90.3%	199,155	132,793	50.0%
LATVIA	255	193	32.1%	2,217	2,348	-5.6%
LITHUANIA	208	219	-5.0%	2,793	2,367	18.0%
LUXEMBOURG	337	292	15.4%	4,376	3,807	14.9%
NETHERLANDS	3,476	3,407	2.0%	70,398	57,702	22.0%
POLAND	5,831	6,347	-8.1%	59,812	53,283	12.3%
PORTUGAL	4,568	3,728	22.5%	34,890	30,858	13.1%
ROMANIA	1,371	1,287	6.5%	14,127	11,066	27.7%
SLOVAKIA	630	720	-12.5%	7,459	7,297	2.2%
SLOVENIA	1,028	780	31.8%	9,959	7,453	33.6%
SPAIN	16,508	14,472	14.1%	172,334	154,928	11.2%
SWEDEN	5,120	4,501	13.8%	51,669	44,798	15.3%
UNITED KINGDOM	27,239	30,410	-10.4%	375,687	371,830	1.0%
EUROPEAN UNION	177,303	160,783	10.3%	1,918,950	1,714,554	11.9%
EU15 ³	162,188	145,764	11.3%	1,763,175	1,579,821	11.6%
EU12 ⁴	15,115	15,019	0.6%	155,775	134,733	15.6%
ICELAND	126	105	20.0%	1,773	1,276	38.9%
NORWAY	5,332	4,465	19.4%	36,008	33,254	8.3%
SWITZERLAND	2,470	2,606	-5.2%	30,014	31,018	-3.2%
EFTA	7,928	7,176	10.5%	67,795	65,548	3.4%
EU+EFTA	185,231	167,959	10.3%	1,986,745	1,780,102	11.6%
WESTERN EUROPE (EU15+EFTA)	170,116	152,940	11.2%	1,830,970	1,645,369	11.3%

SOURCE: NATIONAL AUTOMOBILE MANUFACTURERS' ASSOCIATIONS

¹ Data for Malta unavailable

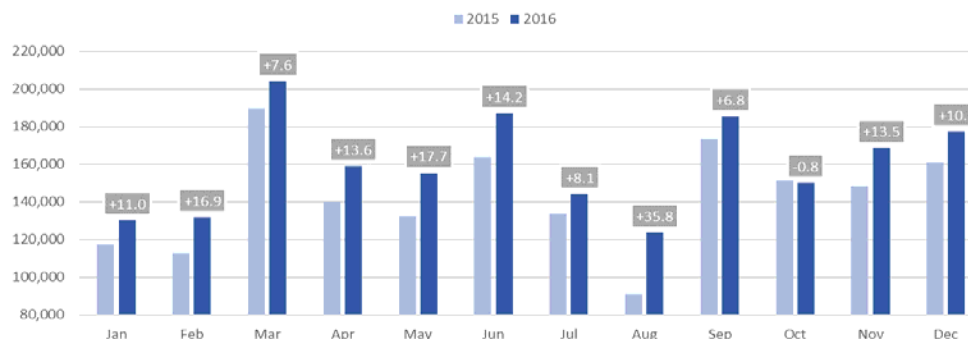
³ Member States before the 2004 enlargement

⁵ Estimates

² Including Light Buses & Coaches

⁴ Member States having joined the EU since 2004

New light commercial vehicle registrations in the EU - 12 month trend



For further information, please contact: Ms Francesca Piazza - Statistics Manager - E-mail: fp@acea.be - Tel. (32) 2 738 73 55

This information is available on the ACEA website: <http://www.acea.be>

Next press release on Commercial Vehicles to be issued on Thursday 23 February 2017

P R E S S R E L E A S E

PRESS EMBARGO FOR ALL DATA :

8.00 AM (7.00 AM GMT), 25 January 2017

PROVISIONAL

EU+EFTA¹ COUNTRIES NEW REGISTRATION FIGURES BY MARKET
NEW HEAVY COMMERCIAL VEHICLES of 16t and over²

25/01/17

	December '16	December '15	% Change	Jan-Dec '16	Jan-Dec '15	% Change
AUSTRIA	484	310	56.1%	7,394	6,716	10.1%
BELGIUM	413	366	12.8%	8,027	6,819	17.7%
BULGARIA	N/A	N/A	N/A	N/A	N/A	N/A
CROATIA	65	51	27.5%	1,060	779	36.1%
CYPRUS ⁴	3	4	-25.0%	42	24	75.0%
CZECH REPUBLIC ³	742	732	1.4%	9,281	8,793	5.5%
DENMARK	399	290	37.6%	4,580	4,357	5.1%
ESTONIA	30	17	76.5%	841	708	18.8%
FINLAND	180	170	5.9%	2,599	2,126	22.2%
FRANCE	3,547	3,364	5.4%	41,600	36,855	12.9%
GERMANY	4,437	4,079	8.8%	63,879	60,947	4.8%
GREECE	18	54	-66.7%	203	278	-27.0%
HUNGARY	566	643	-12.0%	5,031	5,229	-3.8%
IRELAND ⁴	21	9	133.3%	2,103	1,491	41.0%
ITALY ⁵	2,528	842	200.2%	18,139	11,865	52.9%
LATVIA	121	63	92.1%	1,531	1,327	15.4%
LITHUANIA ⁴	196	118	66.1%	5,891	3,497	68.5%
LUXEMBOURG ⁴	47	42	11.9%	1,145	1,005	13.9%
NETHERLANDS	823	755	9.0%	13,837	12,378	11.8%
POLAND	2,171	1,986	9.3%	24,431	20,238	20.7%
PORTUGAL	549	337	62.9%	4,166	3,434	21.3%
ROMANIA	648	440	47.3%	7,487	5,672	32.0%
SLOVAKIA	311	249	24.9%	4,138	4,079	1.4%
SLOVENIA ⁴	179	136	31.6%	2,208	1,743	26.7%
SPAIN	1,688	1,584	6.6%	20,785	19,151	8.5%
SWEDEN	639	514	24.3%	5,913	4,827	22.5%
UNITED KINGDOM ⁴	3,239	3,562	-9.1%	35,859	35,849	0.03%
EUROPEAN UNION	24,044	20,717	16.1%	292,170	260,187	12.3%
EU15	19,012	16,278	16.8%	230,229	208,098	10.6%
EU12	5,032	4,439	13.4%	61,941	52,089	18.9%
ICELAND	15	10	50.0%	154	114	35.1%
NORWAY ⁴	366	217	68.7%	4,378	3,894	12.4%
SWITZERLAND ³	181	161	12.4%	3,097	3,033	2.1%
EFTA	562	388	44.8%	7,629	7,041	8.4%
EU+EFTA	24,606	21,105	16.6%	299,799	267,228	12.2%
WESTERN EUROPE (EU15+EFTA)	19,574	16,666	17.4%	237,858	215,139	10.6%

SOURCE: NATIONAL AUTOMOBILE MANUFACTURERS' ASSOCIATIONS

¹ Data for Malta unavailable

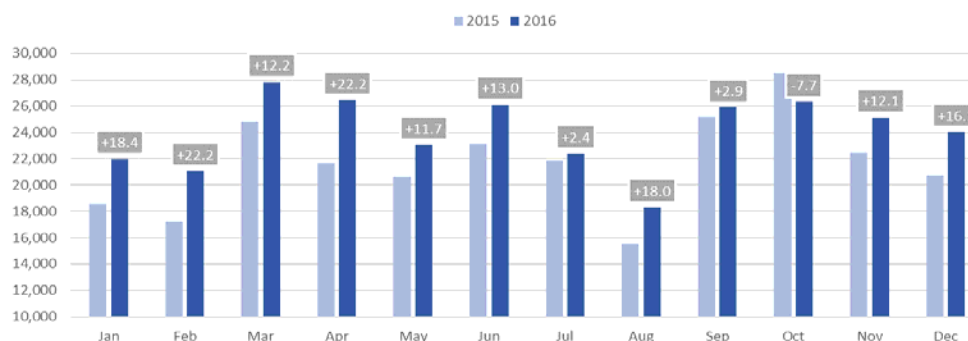
⁴ Estimates

² Excluding Heavy Buses & Coaches

⁵ ANFA estimates based on vehicle registration certificates issued by the Italian Ministry of Transport

³ Heavy Commercial Vehicles of 18t and over

New heavy commercial vehicle registrations in the EU - 12 month trend



For further information, please contact: Ms Francesca Piazza - Statistics Manager - E-mail: fp@acea.be - Tel. (32) 2 738 73 55

This information is available on the ACEA website: <http://www.acea.be>

P R E S S R E L E A S E

PRESS EMBARGO FOR ALL DATA :

8.00 AM (7.00 AM GMT), 25 January 2017

PROVISIONAL

EU+EFTA¹ COUNTRIES NEW REGISTRATION FIGURES BY MARKET NEW MEDIUM & HEAVY COMMERCIAL VEHICLES over 3.5t²

25/01/17

	December '16	December '15	% Change	Jan-Dec '16	Jan-Dec '15	% Change
AUSTRIA	517	353	46.5%	7,979	7,281	9.6%
BELGIUM	492	457	7.7%	9,456	8,327	13.6%
BULGARIA	N/A	N/A	N/A	N/A	N/A	N/A
CROATIA	86	62	38.7%	1,346	1,011	33.1%
CYPRUS ⁴	4	7	-42.9%	60	47	27.7%
CZECH REPUBLIC	899	1,050	-14.4%	11,063	10,732	3.1%
DENMARK	444	329	35.0%	5,098	4,757	7.2%
ESTONIA	36	22	63.6%	881	763	15.5%
FINLAND	249	231	7.8%	3,330	2,707	23.0%
FRANCE	4,085	3,918	4.3%	48,157	42,780	12.6%
GERMANY	7,145	7,056	1.3%	92,556	89,744	3.1%
GREECE	26	57	-54.4%	321	457	-29.8%
HUNGARY	663	733	-9.5%	5,516	5,701	-3.2%
IRELAND	29	15	93.3%	2,511	1,875	33.9%
ITALY ³	3,246	1,108	193.0%	23,370	15,138	54.4%
LATVIA	130	73	78.1%	1,590	1,409	12.8%
LITHUANIA ⁴	204	125	63.2%	6,004	3,602	66.7%
LUXEMBOURG	50	51	-2.0%	1,227	1,076	14.0%
NETHERLANDS	907	839	8.1%	15,347	13,754	11.6%
POLAND	2,395	2,235	7.2%	26,628	22,439	18.7%
PORTUGAL	642	420	52.9%	4,824	4,039	19.4%
ROMANIA	665	474	40.3%	7,837	5,954	31.6%
SLOVAKIA	336	294	14.3%	4,612	4,447	3.7%
SLOVENIA ⁴	204	157	29.9%	2,392	1,907	25.4%
SPAIN	1,954	1,939	0.8%	24,703	22,435	10.1%
SWEDEN	720	576	25.0%	6,498	5,457	19.1%
UNITED KINGDOM ⁴	4,300	4,576	-6.0%	51,745	50,978	1.5%
EUROPEAN UNION	30,428	27,157	12.0%	365,051	328,817	11.0%
EU15	24,806	21,925	13.1%	297,122	270,805	9.7%
EU12	5,622	5,232	7.5%	67,929	58,012	17.1%
ICELAND	21	25	-16.0%	285	215	32.6%
NORWAY	485	266	82.3%	5,982	5,196	15.1%
SWITZERLAND	266	216	23.1%	4,076	3,878	5.1%
EFTA	772	507	52.3%	10,343	9,289	11.3%
EU+EFTA	31,200	27,664	12.8%	375,394	338,106	11.0%
WESTERN EUROPE (EU15+EFTA)	25,578	22,432	14.0%	307,465	280,094	9.8%

SOURCE: NATIONAL AUTOMOBILE MANUFACTURERS' ASSOCIATIONS

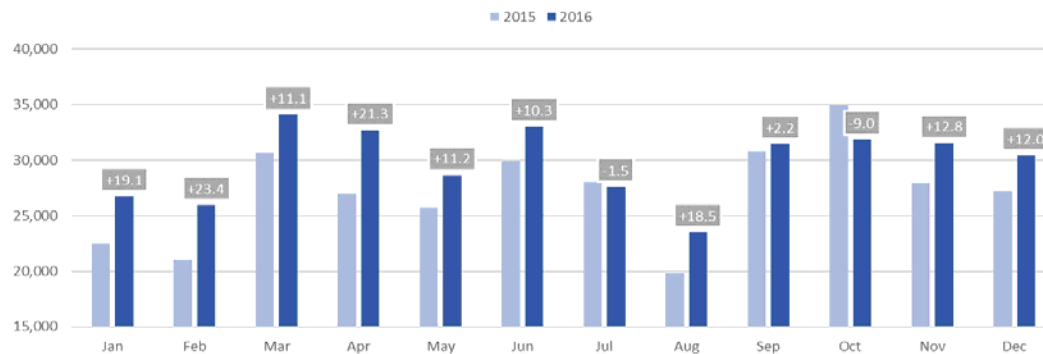
¹ Data for Malta unavailable

³ ANFIA estimates based on vehicle registration certificates issued by the Italian Ministry of Transport

² Excluding total Buses & Coaches over 3.5t

⁴ Estimates

New medium and heavy commercial vehicle registrations in the EU - 12 month trend



For further information, please contact: Ms Francesca Piazza - Statistics Manager - E-mail: fp@acea.be - Tel. (32) 2 738 73 55

This information is available on the ACEA website: <http://www.acea.be>

P R E S S R E L E A S E

PRESS EMBARGO FOR ALL DATA :

8.00 AM (7.00 AM GMT), 25 January 2017

PROVISIONAL

EU+EFTA¹ COUNTRIES NEW REGISTRATION FIGURES BY MARKET
NEW MEDIUM & HEAVY BUSES & COACHES over 3.5t

25/01/17

	December '16	December '15	% Change	Jan-Dec '16	Jan-Dec '15	% Change
AUSTRIA	101	98	3.1%	1,043	899	16.0%
BELGIUM	64	31	106.5%	714	923	-22.6%
BULGARIA	N/A	N/A	N/A	N/A	N/A	N/A
CROATIA	4	6	-33.3%	186	122	52.5%
CYPRUS	N/A	N/A	N/A	N/A	N/A	N/A
CZECH REPUBLIC	90	170	-47.1%	1,013	1,350	-25.0%
DENMARK	60	80	-25.0%	736	532	38.3%
ESTONIA	1	34	-97.1%	172	229	-24.9%
FINLAND	65	37	75.7%	586	526	11.4%
FRANCE	549	733	-25.1%	6,593	7,345	-10.2%
GERMANY	911	927	-1.7%	6,683	6,137	8.9%
GREECE	8	8	0.0%	191	129	48.1%
HUNGARY	50	91	-45.1%	408	546	-25.3%
IRELAND	0	32	-100.0%	362	313	15.7%
ITALY ²	307	195	57.4%	2,799	2,411	16.1%
LATVIA	33	45	-26.7%	179	242	-26.0%
LITHUANIA ³	7	10	-30.0%	263	195	34.9%
LUXEMBOURG	15	2	650.0%	205	251	-18.3%
NETHERLANDS	317	25	1168.0%	840	344	144.2%
POLAND	318	212	50.0%	1,987	1,742	14.1%
PORTUGAL	20	11	81.8%	354	254	39.4%
ROMANIA	64	128	-50.0%	1,102	2,309	-52.3%
SLOVAKIA	17	97	-82.5%	364	379	-4.0%
SLOVENIA ³	12	21	-42.9%	188	163	15.3%
SPAIN	396	235	68.5%	3,300	2,617	26.1%
SWEDEN	195	168	16.1%	1,333	1,330	0.2%
UNITED KINGDOM ³	606	594	2.0%	8,769	8,161	7.5%
EUROPEAN UNION	4,210	3,990	5.5%	40,370	39,449	2.3%
EU15	3,614	3,176	13.8%	34,508	32,172	7.3%
EU12	596	814	-26.8%	5,862	7,277	-19.4%
ICELAND	5	7	-28.6%	235	110	113.6%
NORWAY	110	194	-43.3%	1,398	970	44.1%
SWITZERLAND	98	87	12.6%	699	745	-6.2%
EFTA	213	288	-26.0%	2,332	1,825	27.8%
EU+EFTA	4,423	4,278	3.4%	42,702	41,274	3.5%
WESTERN EUROPE (EU15+EFTA)	3,827	3,464	10.5%	36,840	33,997	8.4%

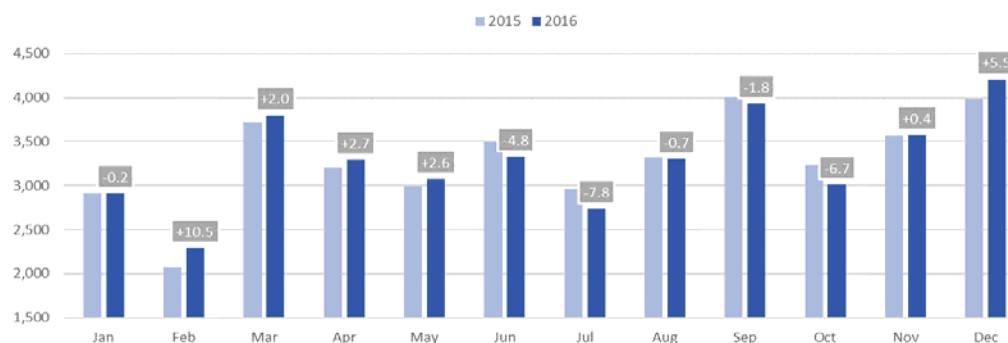
SOURCE: NATIONAL AUTOMOBILE MANUFACTURERS' ASSOCIATIONS

¹ Data for Malta unavailable

² ANFIA estimates based on vehicle registration certificates issued by the Italian Ministry of Transport

³ Estimates

New medium and heavy buses & coaches registrations in the EU - 12 month trend



For further information, please contact: Ms Francesca Piazza - Statistics Manager - E-mail: fp@acea.be - Tel. (32) 2 738 73 55

This information is available on the ACEA website: <http://www.acea.be>

PRESS EMBARGO FOR ALL DATA :

8.00 AM (7.00 AM GMT), 25 January 2017

PROVISIONAL
EU+EFTA¹ COUNTRIES NEW REGISTRATION FIGURES BY MARKET
TOTAL NEW COMMERCIAL VEHICLES²

25/01/17

	December '16	December '15	% Change	Jan-Dec '16	Jan-Dec '15	% Change
AUSTRIA	3,154	3,039	3.8%	44,941	41,042	9.5%
BELGIUM	5,449	4,873	11.8%	78,335	70,458	11.2%
BULGARIA ³	439	413	6.3%	4,890	4,553	7.4%
CROATIA	755	569	32.7%	9,705	7,828	24.0%
CYPRUS ⁴	182	131	38.9%	1,916	1,490	28.6%
CZECH REPUBLIC	2,805	3,142	-10.7%	31,315	29,213	7.2%
DENMARK	3,696	3,726	-0.8%	42,462	37,768	12.4%
ESTONIA	293	278	5.4%	4,972	4,574	8.7%
FINLAND	1,663	1,290	28.9%	17,435	14,664	18.9%
FRANCE	45,707	44,420	2.9%	463,295	427,866	8.3%
GERMANY	31,451	30,410	3.4%	357,260	333,783	7.0%
GREECE	438	639	-31.5%	6,135	6,239	-1.7%
HUNGARY	3,151	3,115	1.2%	27,255	23,762	14.7%
IRELAND	277	282	-1.8%	31,119	26,017	19.6%
ITALY ⁵	31,403	15,940	97.0%	225,324	150,342	49.9%
LATVIA	418	311	34.4%	3,986	3,999	-0.3%
LITHUANIA	419	354	18.4%	9,060	6,164	47.0%
LUXEMBOURG	402	345	16.5%	5,808	5,134	13.1%
NETHERLANDS	4,700	4,271	10.0%	86,585	71,800	20.6%
POLAND	8,544	8,794	-2.8%	88,427	77,464	14.2%
PORTUGAL	5,230	4,159	25.8%	40,068	35,151	14.0%
ROMANIA	2,100	1,889	11.2%	23,066	19,329	19.3%
SLOVAKIA	983	1,111	-11.5%	12,435	12,123	2.6%
SLOVENIA	1,244	958	29.9%	12,539	9,523	31.7%
SPAIN	18,858	16,646	13.3%	200,337	179,980	11.3%
SWEDEN	6,035	5,245	15.1%	59,500	51,585	15.3%
UNITED KINGDOM	32,145	35,580	-9.7%	436,201	430,969	1.2%
EUROPEAN UNION	211,941	191,930	10.4%	2,324,371	2,082,820	11.6%
EU15	190,608	170,865	11.6%	2,094,805	1,882,798	11.3%
EU12	21,333	21,065	1.3%	229,566	200,022	14.8%
ICELAND	152	137	10.9%	2,293	1,601	43.2%
NORWAY	5,927	4,925	20.3%	43,388	39,420	10.1%
SWITZERLAND	2,834	2,909	-2.6%	34,789	35,641	-2.4%
EFTA	8,913	7,971	11.8%	80,470	76,662	5.0%
EU+EFTA	220,854	199,901	10.5%	2,404,841	2,159,482	11.4%
WESTERN EUROPE (EU15+EFTA)	199,521	178,836	11.6%	2,175,275	1,959,460	11.0%

SOURCE: NATIONAL AUTOMOBILE MANUFACTURERS' ASSOCIATIONS

¹ Data for Malta unavailable

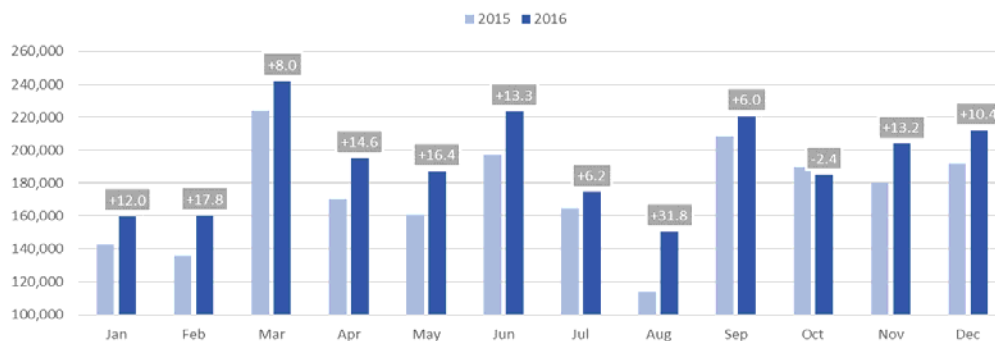
⁴ Data for Buses & Coaches unavailable

² Total Light, Medium & Heavy Commercial Vehicles and Buses & Coaches

⁵ ANFIA estimates based on vehicle registration certificates issued by the Italian Ministry of Transport

³ Data for Medium & Heavy Commercial Vehicles and Buses & Coaches unavailable

Total new commercial vehicle registrations in the EU - 12 month trend



For further information, please contact: Ms Francesca Piazza - Statistics Manager - E-mail: fp@acea.be - Tel. (32) 2 738 73 55

This information is available on the ACEA website: <http://www.acea.be>