



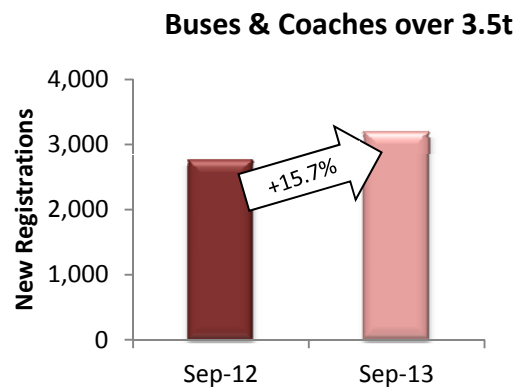
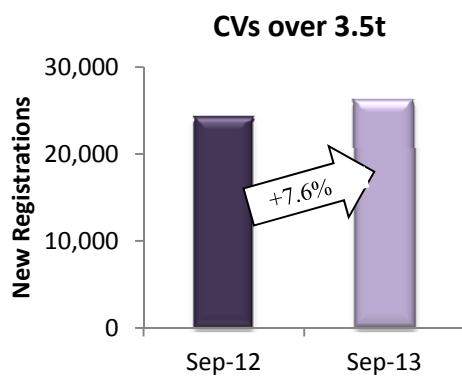
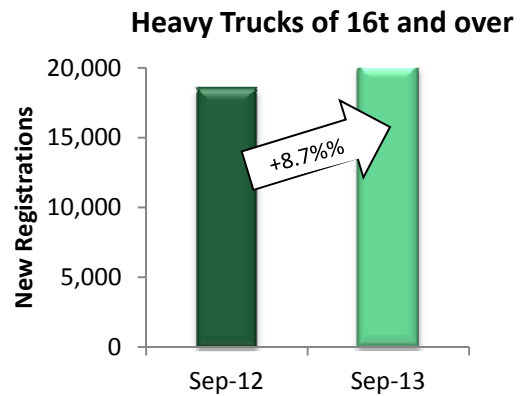
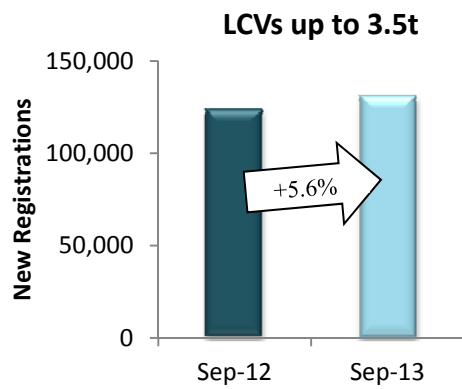
PRESS EMBARGO FOR ALL DATA:
October 29, 2013, 8.00 A.M. (7.00 A.M. GMT)

Press Release

NEW COMMERCIAL VEHICLE REGISTRATIONS

September 2013

EU Countries



Next Press Release: Thursday, November 28, 2013

COMMERCIAL VEHICLE registrations: - 4.0% over nine months; +6.1% in September

In September, new commercial vehicle registrations grew by 6.1% in the EU* totaling 160,038 units. The month counted on average one more working day across the region. Looking at the major markets, the French (-1.8%) and the Italian (-3.5%) shrank, in comparison with September 2012, while the German grew by 4.2% and the UK (+12.5%) and Spanish (+25.4%) posted a double-digit upturn. **Three quarters into the year**, demand for new commercial vehicles was down 4.0% in the EU* with 1,230,188 new registrations. Spain (+1.8%) and the UK (+7.9%) recorded more vehicles than in the same period last year, while Germany (-6.9%), France (-7.0%) and Italy (-16.2%) saw their markets decline.

New Light Commercial Vehicles up to 3.5t – "vans"

In September, the number of new van registrations increased by 5.6%, amounting to 130,789 units. Italy (-1.5%) and France (-3.1%) performed less well than in the same month last year, while Germany (+4.3%), the UK (+10.3%) and Spain (+29.1%) registered more vehicles. **From January to September**, results were diverse across countries. France (-6.9%) and Germany (-6.4%) performed similarly, while Italy (-16.3%) recorded a sharper downturn. Spain (+4.0%) and the UK (+9.6%) fared better than in the first nine months of 2012. Overall, the market of new vans shrank by 3.4%, totaling 1,004,479 units in the EU*.

New Heavy Commercial Vehicles over 16t (excluding Buses & Coaches) – "heavy trucks"

The segment of heavy trucks grew by 8.7% **in September**, accounting for 20,114 new registrations. Most markets expanded, from +3.7% in Germany to +7.0% in France, +11.0% in Spain and +40.2% in the UK. Italy was the only major market to shrink (-24.1%). **Nine months into the year**, the UK was the only country to post growth (+6.1%), as downturn ranged from -8.4% in France to -8.9% in Germany, -12.1% in Spain and -14.1% in Italy, leading to an overall 6.1% decrease in the region. In total, 151,817 new heavy trucks were registered in the period.

New Commercial Vehicles over 3.5t (excluding Buses & Coaches) – "trucks"

In September, the EU* registered 26,058 new trucks, or 7.6% more than in the same month last year. Italy was the only significant market to contract, as growth ranged from +2.5% in Germany to +7.0% in France, +12.1% in Spain and +32.0% in the UK. **From January to September**, most major markets declined, from -8.6% in Germany to -9.5% in France, -11.7% in Spain and -17.3% in Italy. The UK stood out with a 1.5% expansion of its market. In total, 202,239 new trucks were registered, or 6.8% less than in the first nine months of 2012.

New Buses & Coaches over 3.5t

In September, growth prevailed across major EU markets, leading to an overall 15.7% upturn. The UK (+21.3%), France (+13.6%) and Germany (+38.6%) remained the largest markets. **Three quarters into the year**, results were diverse with Germany (+3.0%) and France (+8.6%) recording growth, while Italy (-1.8%), Spain (-7.3%) and the UK (-12.0%) faced a downturn. Overall, demand for new buses and coaches reached 23,470 units, or 2.7% less than in the same period a year earlier.

* Data for Malta unavailable



ACEA

Association des
Constructeurs
Européens
d'Automobiles

Av. des Nerviens 85
B-1040 Bruxelles

Tel (32 2) 732 55 50
Fax (32 2) 738 73 10
(32 2) 738 73 11

Press Release

**PRESS EMBARGO FOR ALL DATA :
8.00 A.M.(7.00 A.M. GMT), October 29, 2013**

PROVISIONAL EU' COUNTRIES REGISTRATION FIGURES BY MARKET NEW LIGHT COMMERCIAL VEHICLES up to 3.5t²

29/10/13

	September '13	September '12	% Change	Jan-Sep '13	Jan-Sep '12	% Change
AUSTRIA	2,431	2,321	4.7%	23,035	24,353	-5.4%
BELGIUM	3,616	3,820	-5.3%	41,989	42,706	-1.7%
BULGARIA ⁴	289	357	-19.0%	2,532	2,126	19.1%
CYPRUS	100	93	7.5%	697	1,000	-30.3%
CZECH REPUBLIC	1,120	985	13.7%	8,239	8,286	-0.6%
DENMARK	2,037	1,749	16.5%	17,265	17,386	-0.7%
ESTONIA	194	165	17.6%	2,044	1,525	34.0%
FINLAND	977	825	18.4%	7,931	9,067	-12.5%
FRANCE	29,009	29,933	-3.1%	265,029	284,812	-6.9%
GERMANY	17,289	16,582	4.3%	151,539	161,826	-6.4%
GREECE	266	224	18.8%	2,607	2,595	0.5%
HUNGARY	912	834	9.4%	7,463	8,071	-7.5%
IRELAND	821	674	21.8%	9,867	9,922	-0.6%
ITALY ³	8,200	8,321	-1.5%	71,644	85,616	-16.3%
LATVIA	192	161	19.3%	1,478	1,660	-11.0%
LITHUANIA	130	69	88.4%	1,222	1,082	12.9%
LUXEMBURG	266	196	35.7%	2,320	2,526	-8.2%
NETHERLANDS	3,696	3,828	-3.4%	39,572	45,379	-12.8%
POLAND	3,336	2,581	29.3%	29,280	28,589	2.4%
PORTUGAL	1,285	1,119	14.8%	10,962	10,852	1.0%
ROMANIA	651	713	-8.7%	6,003	7,419	-19.1%
SLOVAKIA	428	483	-11.4%	3,713	3,716	-0.1%
SLOVENIA	560	483	15.9%	4,932	4,736	4.1%
SPAIN	6,451	4,998	29.1%	61,127	58,763	4.0%
SWEDEN	3,467	3,236	7.1%	26,985	28,911	-6.7%
UNITED KINGDOM	43,066	39,060	10.3%	205,004	187,067	9.6%
EUROPEAN UNION¹	130,789	123,810	5.6%	1,004,479	1,039,991	-3.4%
EU 15	122,877	116,886	5.1%	936,876	971,781	-3.6%
EU 10	7,912	6,924	14.3%	67,603	68,210	-0.9%
ICELAND	61	36	69.4%	455	313	45.4%
NORWAY	2,300	2,562	-10.2%	22,742	23,674	-3.9%
SWITZERLAND	2,263	2,209	2.4%	21,923	23,273	-5.8%
EFTA	4,624	4,807	-3.8%	45,120	47,260	-4.5%
EU27 + EFTA	135,413	128,617	5.3%	1,049,599	1,087,251	-3.5%
EU15 + EFTA	127,501	121,693	4.8%	981,996	1,019,041	-3.6%

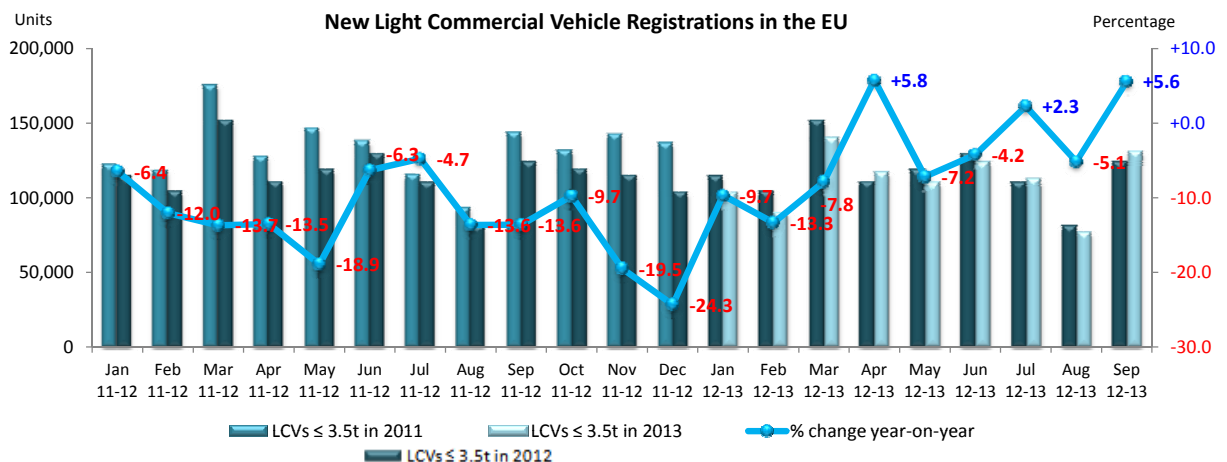
(¹) EU27: data for Malta currently not available.

(²) ANFIA estimate

For further information, please call: Ms. Quynh-Nhu Huynh - Director Economics & Statistics - Tel. + 32 2 738 73 55

(³) including Buses & Coaches

(⁴) estimate



<http://www.acea.be>

Next Press Release on Commercial Vehicles to be issued on November 28, 2013



ACEA

Association des
Constructeurs
Européens
d'Automobiles

Av. des Nerviens 85
B-1040 Bruxelles

Tel (32 2) 732 55 50
Fax (32 2) 738 73 10
(32 2) 738 73 11

Press Release

**PRESS EMBARGO FOR ALL DATA :
8.00 A.M.(7.00 A.M. GMT), October 29, 2013**

PROVISIONAL

EU¹ + EFTA COUNTRIES REGISTRATION FIGURES BY MARKET NEW HEAVY COMMERCIAL VEHICLES of 16t and over²

29/10/13

	September '13	September '12	% Change	Jan-Sep '13	Jan-Sep '12	% Change
AUSTRIA	575	463	24.2%	4,693	4,784	-1.9%
BELGIUM	532	689	-22.8%	4,374	5,565	-21.4%
BULGARIA	n.a.	n.a.	n.a.	n.a.	n.a.	n.a.
CYPRUS	0	1	-100.0%	24	50	-52.0%
CZECH REPUBLIC ³	649	681	-4.7%	4,400	4,078	7.9%
DENMARK	335	230	45.7%	2,263	2,662	-15.0%
ESTONIA	58	60	-3.3%	550	408	34.8%
FINLAND	140	185	-24.3%	1,701	1,856	-8.4%
FRANCE	2,993	2,798	7.0%	25,892	28,268	-8.4%
GERMANY	4,592	4,428	3.7%	38,780	42,585	-8.9%
GREECE	6	9	-33.3%	111	88	26.1%
HUNGARY	290	360	-19.4%	2,686	2,912	-7.8%
IRELAND	120	79	51.9%	1,013	837	21.0%
ITALY ⁴	529	697	-24.1%	6,676	7,776	-14.1%
LATVIA	119	144	-17.4%	882	1,066	-17.3%
LITHUANIA ⁵	382	381	0.3%	2,200	2,172	1.3%
LUXEMBURG ⁵	71	77	-7.8%	593	701	-15.4%
NETHERLANDS	851	985	-13.6%	7,119	7,870	-9.5%
POLAND	1,492	1,318	13.2%	10,648	10,451	1.9%
PORTUGAL	137	176	-22.2%	1,059	1,082	-2.1%
ROMANIA	389	159	144.7%	2,002	2,012	-0.5%
SLOVAKIA	321	280	14.6%	2,172	2,285	-4.9%
SLOVENIA ⁵	65	103	-36.9%	670	730	-8.2%
SPAIN	910	820	11.0%	6,225	7,084	-12.1%
SWEDEN	381	397	-4.0%	2,915	3,507	-16.9%
UNITED KINGDOM	4,177	2,980	40.2%	22,169	20,887	6.1%
EUROPEAN UNION¹	20,114	18,500	8.7%	151,817	161,716	-6.1%
EUROPEAN UNION (EU15)	16,349	15,013	8.9%	125,583	135,552	-7.4%
EU (New Members)	3,765	3,487	8.0%	26,234	26,164	0.3%
ICELAND	4	4	0.0%	37	46	-19.6%
NORWAY ⁵	314	371	-15.4%	2,775	2,946	-5.8%
SWITZERLAND ³	230	202	13.9%	2,157	2,322	-7.1%
EFTA	548	577	-5.0%	4,969	5,314	-6.5%
TOTAL EUROPE (EU+EFTA)	20,662	19,077	8.3%	156,786	167,030	-6.1%
EU15+EFTA	16,897	15,590	8.4%	130,552	140,866	-7.3%

(¹) EU27; data for Malta and Bulgaria currently not available.

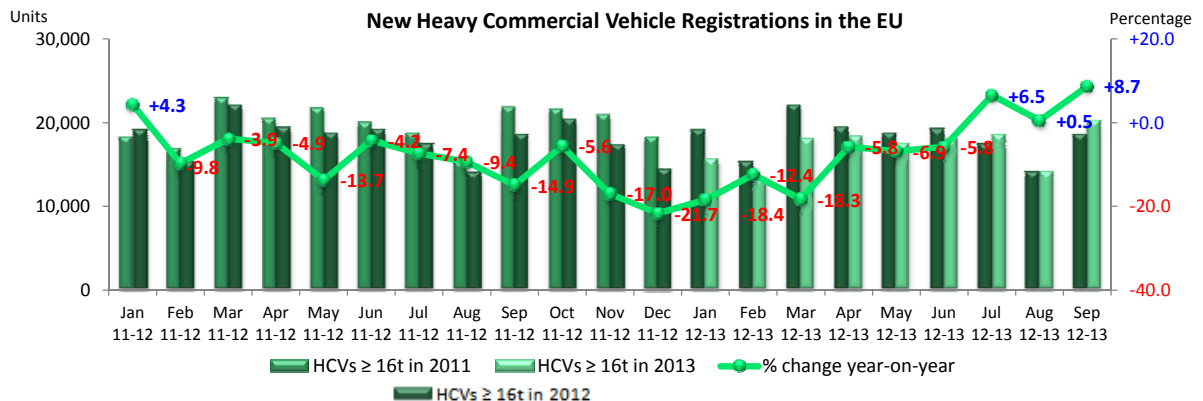
(²) Excluding Buses and Coaches

(³) CV ≥ 18t

(⁴) ANFIA estimate, based on data of the Italian Ministry of Transport

(⁵) estimates

For further information, please call: Ms. Quynh-Nhu Huynh - Director Economics & Statistics - Tel. + 32 2 738 73 55



This information is available on the ACEA website:

<http://www.acea.be>



ACEA

Association des
Constructeurs
Européens
d'Automobiles

Av. des Nerviens 85
B-1040 Bruxelles

Tel (32 2) 732 55 50
Fax (32 2) 738 73 10
(32 2) 738 73 11

Press Release

**PRESS EMBARGO FOR ALL DATA :
8.00 A.M.(7.00 A.M. GMT), October 29, 2013**

PROVISIONAL

EU¹ + EFTA COUNTRIES REGISTRATION FIGURES BY MARKET NEW MEDIUM & HEAVY COMMERCIAL VEHICLES over 3.5t²

29/10/13

	September '13	September '12	% Change	Jan-Sep '13	Jan-Sep '12	% Change
AUSTRIA	642	499	28.7%	5,118	5,200	-1.6%
BELGIUM	647	829	-22.0%	5,487	6,928	-20.8%
BULGARIA	n.a.	n.a.	n.a.	n.a.	n.a.	n.a.
CYPRUS	0	1	-100.0%	53	68	-22.1%
CZECH REPUBLIC	794	830	-4.3%	5,571	5,257	6.0%
DENMARK	369	248	48.8%	2,547	2,932	-13.1%
ESTONIA	67	66	1.5%	602	467	28.9%
FINLAND	204	243	-16.0%	2,281	2,476	-7.9%
FRANCE	3,417	3,193	7.0%	31,380	34,659	-9.5%
GERMANY	7,391	7,214	2.5%	61,406	67,204	-8.6%
GREECE	20	19	5.3%	206	154	33.8%
HUNGARY	315	386	-18.4%	2,996	3,208	-6.6%
IRELAND	133	87	52.9%	1,221	1,012	20.7%
ITALY ⁴	682	940	-27.4%	8,970	10,852	-17.3%
LATVIA	124	151	-17.9%	939	1,110	-15.4%
LITHUANIA ³	400	382	4.7%	2,353	2,233	5.4%
LUXEMBURG	77	82	-6.1%	667	776	-14.0%
NETHERLANDS	941	1,100	-14.5%	8,268	8,970	-7.8%
POLAND	1,735	1,493	16.2%	12,468	12,094	3.1%
PORTUGAL	167	195	-14.4%	1,300	1,319	-1.4%
ROMANIA	411	176	133.5%	2,173	2,187	-0.6%
SLOVAKIA	366	319	14.7%	2,482	2,675	-7.2%
SLOVENIA ³	72	115	-37.4%	754	856	-11.9%
SPAIN	1,034	922	12.1%	7,852	8,892	-11.7%
SWEDEN	417	455	-8.4%	3,276	3,995	-18.0%
UNITED KINGDOM	5,633	4,269	32.0%	31,869	31,411	1.5%
EUROPEAN UNION¹	26,058	24,214	7.6%	202,239	216,935	-6.8%
EUROPEAN UNION (EU15)	21,774	20,295	7.3%	171,848	186,780	-8.0%
EU (New Members)	4,284	3,919	9.3%	30,391	30,155	0.8%
ICELAND	6	9	-33.3%	64	60	6.7%
NORWAY	395	501	-21.2%	4,250	4,453	-4.6%
SWITZERLAND	299	282	6.0%	2,730	3,075	-11.2%
EFTA	700	792	-11.6%	7,044	7,588	-7.2%
TOTAL EUROPE (EU+EFTA)	26,758	25,006	7.0%	209,283	224,523	-6.8%
EU15+EFTA	22,474	21,087	6.6%	178,892	194,368	-8.0%

(¹) EU27; data for Malta and Bulgaria currently not available.

(²) Excluding Buses and Coaches

(³) estimates

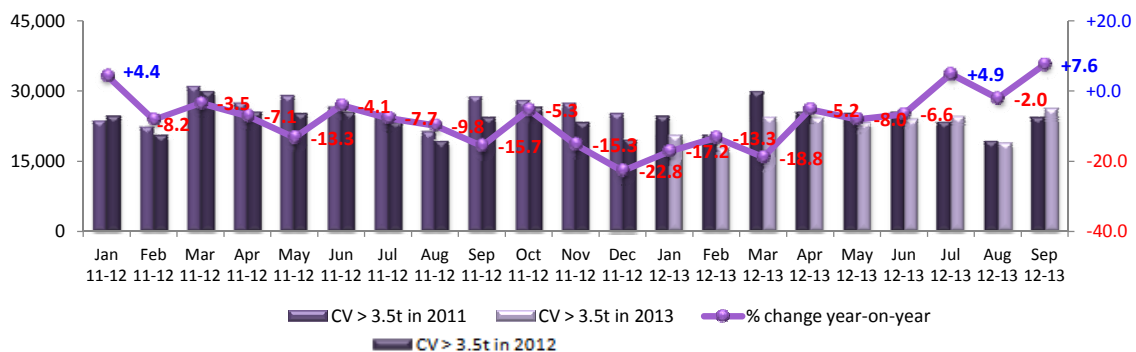
(⁴) ANFIA estimate, based on data of the Italian Ministry of Transport

For further information, please call: Ms. Quynh-Nhu Huynh - Director Economics & Statistics - Tel. + 32 2 738 73 55

Units

New Medium & Heavy Commercial Vehicle Registrations in the EU

Percentage



This information is available on the ACEA website:

<http://www.acea.be>



ACEA

Association des
Constructeurs
Européens
d'Automobiles

Av. des Nerviens 85
B-1040 Bruxelles

Tel (32 2) 732 55 50
Fax (32 2) 738 73 10
(32 2) 738 73 11

Press Release

**PRESS EMBARGO FOR ALL DATA :
8.00 A.M.(7.00 A.M. GMT), October 29, 2013**

PROVISIONAL

EU¹ + EFTA COUNTRIES REGISTRATION FIGURES BY MARKET NEW MEDIUM & HEAVY BUSES & COACHES over 3.5t

29/10/13

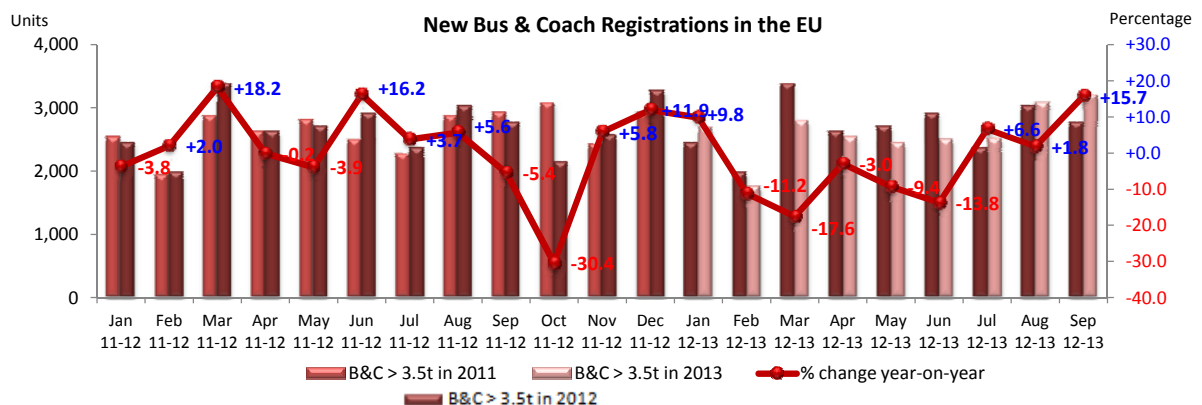
	September '13	September '12	% Change	Jan-Sep '13	Jan-Sep '12	% Change
AUSTRIA	60	68	-11.8%	454	545	-16.7%
BELGIUM	73	46	58.7%	603	608	-0.8%
BULGARIA	n.a.	n.a.	n.a.	n.a.	n.a.	n.a.
CYPRUS	n.a.	n.a.	n.a.	n.a.	n.a.	n.a.
CZECH REPUBLIC	101	66	53.0%	585	538	8.7%
DENMARK	39	52	-25.0%	295	368	-19.8%
ESTONIA	1	2	-50.0%	65	113	-42.5%
FINLAND	23	23	0.0%	268	393	-31.8%
FRANCE	642	565	13.6%	5,116	4,709	8.6%
GERMANY	474	342	38.6%	3,621	3,514	3.0%
GREECE	5	4	25.0%	71	111	-36.0%
HUNGARY	5	3	66.7%	270	36	650.0%
IRELAND	20	27	-25.9%	142	196	-27.6%
ITALY ³	257	210	22.4%	1,664	1,695	-1.8%
LATVIA	8	10	-20.0%	162	67	141.8%
LITHUANIA ²	13	0	#DIV/0!	153	108	41.7%
LUXEMBURG	3	12	-75.0%	122	131	-6.9%
NETHERLANDS	7	7	0.0%	325	259	25.5%
POLAND	71	60	18.3%	854	924	-7.6%
PORTUGAL	8	22	-63.6%	136	201	-32.3%
ROMANIA	38	93	-59.1%	639	662	-3.5%
SLOVAKIA	7	10	-30.0%	158	189	-16.4%
SLOVENIA ²	10	10	0.0%	102	77	32.5%
SPAIN	259	257	0.8%	1,261	1,361	-7.3%
SWEDEN	140	104	34.6%	1,045	1,226	-14.8%
UNITED KINGDOM	927	764	21.3%	5,359	6,088	-12.0%
EUROPEAN UNION¹	3,191	2,757	15.7%	23,470	24,119	-2.7%
EUROPEAN UNION (EU15)	2,937	2,503	17.3%	20,482	21,405	-4.3%
EU (New Members)	254	254	0.0%	2,988	2,714	10.1%
ICELAND	2	3	-33.3%	70	63	11.1%
NORWAY	69	120	-42.5%	953	1,050	-9.2%
SWITZERLAND	47	22	113.6%	386	366	5.5%
EFTA	118	145	-18.6%	1,409	1,479	-4.7%
TOTAL EUROPE (EU+EFTA)	3,309	2,902	14.0%	24,879	25,598	-2.8%
EU15+EFTA	3,055	2,648	15.4%	21,891	22,884	-4.3%

(¹) EU27; data for Bulgaria, Malta and Cyprus currently not available.

(²) estimates

(³) ANFIA estimate, based on data of the Italian Ministry of Transport

For further information, please call: Ms. Quynh-Nhu Huynh - Director Economics & Statistics - Tel. + 32 2 738 73 55



This information is available on the ACEA website:

<http://www.acea.be>



ACEA

Association des
Constructeurs
Européens
d'Automobiles

Av. des Nerviens 85
B-1040 Bruxelles

Tel (32 2) 732 55 50
Fax (32 2) 738 73 10
(32 2) 738 73 11

Press Release

**PRESS EMBARGO FOR ALL DATA :
8.00 A.M.(7.00 A.M. GMT), October 29, 2013**

PROVISIONAL

EU¹ + EFTA COUNTRIES REGISTRATION FIGURES BY MARKET TOTAL NEW COMMERCIAL VEHICLES

29/10/13

	September '13	September '12	% Change	Jan-Sep '13	Jan-Sep '12	% Change
AUSTRIA	3,133	2,888	8.5%	28,607	30,098	-5.0%
BELGIUM	4,336	4,695	-7.6%	48,079	50,242	-4.3%
BULGARIA ⁴	289	357	-19.0%	2,532	2,126	19.1%
CYPRUS ⁵	100	94	6.4%	750	1,068	-29.8%
CZECH REPUBLIC	2,015	1,881	7.1%	14,395	14,081	2.2%
DENMARK	2,445	2,049	19.3%	20,107	20,686	-2.8%
ESTONIA	262	233	12.4%	2,711	2,105	28.8%
FINLAND	1,204	1,091	10.4%	10,480	11,936	-12.2%
FRANCE	33,068	33,691	-1.8%	301,525	324,180	-7.0%
GERMANY	25,154	24,138	4.2%	216,566	232,544	-6.9%
GREECE	291	247	17.8%	2,884	2,860	0.8%
HUNGARY	1,232	1,223	0.7%	10,729	11,315	-5.2%
IRELAND	974	788	23.6%	11,230	11,130	0.9%
ITALY ²	9,139	9,471	-3.5%	82,278	98,163	-16.2%
LATVIA	324	322	0.6%	2,579	2,837	-9.1%
LITHUANIA	543	451	20.4%	3,728	3,423	8.9%
LUXEMBURG	346	290	19.3%	3,109	3,433	-9.4%
NETHERLANDS	4,644	4,935	-5.9%	48,165	54,608	-11.8%
POLAND	5,142	4,134	24.4%	42,602	41,607	2.4%
PORTUGAL	1,460	1,336	9.3%	12,398	12,372	0.2%
ROMANIA	1,100	982	12.0%	8,815	10,268	-14.2%
SLOVAKIA	801	812	-1.4%	6,353	6,580	-3.4%
SLOVENIA	642	608	5.6%	5,788	5,669	2.1%
SPAIN	7,744	6,177	25.4%	70,240	69,016	1.8%
SWEDEN	4,024	3,795	6.0%	31,306	34,132	-8.3%
UNITED KINGDOM	49,626	44,093	12.5%	242,232	224,566	7.9%
EUROPEAN UNION¹	160,038	150,781	6.1%	1,230,188	1,281,045	-4.0%
EUROPEAN UNION (EU15)	147,588	139,684	5.7%	1,129,206	1,179,966	-4.3%
EU (New Members)	12,450	11,097	12.2%	100,982	101,079	-0.1%
ICELAND	69	48	43.8%	589	436	35.1%
NORWAY	2,764	3,183	-13.2%	27,945	29,177	-4.2%
SWITZERLAND	2,609	2,513	3.8%	25,039	26,714	-6.3%
EFTA	5,442	5,744	-5.3%	53,573	56,327	-4.9%
TOTAL EUROPE (EU+EFTA)	165,480	156,525	5.7%	1,283,761	1,337,372	-4.0%
EU15+EFTA	153,030	145,428	5.2%	1,182,779	1,236,293	-4.3%

(¹) EU27; data for Malta currently not available.

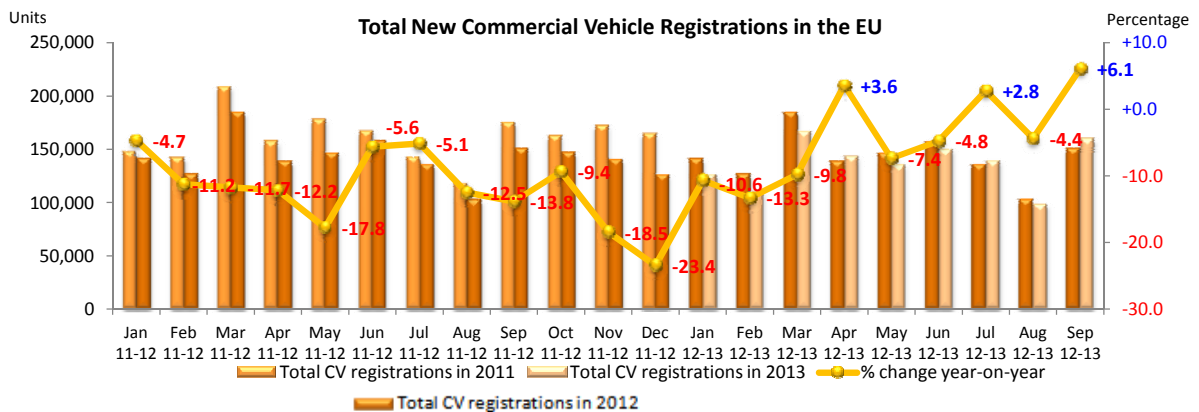
(²) estimates

(³) data for B&C n.a.

(⁴) ANFIA estimate, based on data of the Italian Ministry of Transport

(⁵) data for MCV+HCV and MBC+HBC n.a.

For further information, please call: Ms. Quynh-Nhu Huynh - Director Economics & Statistics - Tel. + 32 2 738 73 55



This information is available on the ACEA website:

<http://www.acea.be>