



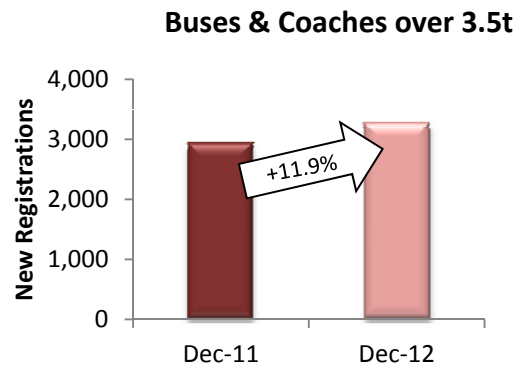
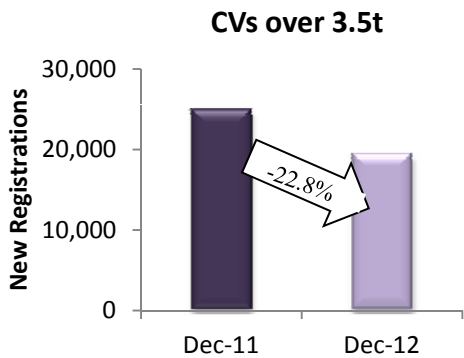
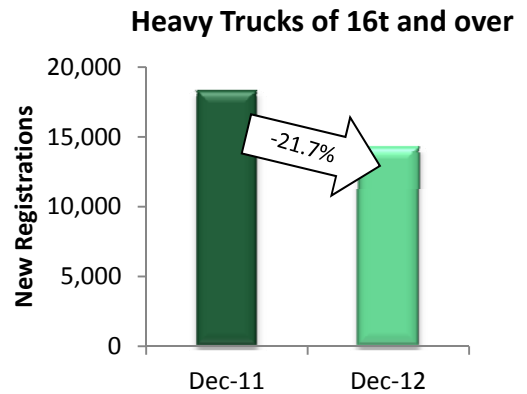
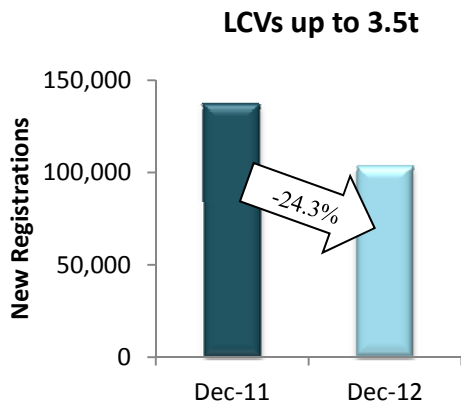
**PRESS EMBARGO FOR ALL DATA:
January 28, 2013, 8.00 A.M. (7.00 A.M. GMT)**

Press Release

NEW COMMERCIAL VEHICLE REGISTRATIONS

December 2012

EU Countries



Next Press Release: Thursday, February 28, 2013

COMMERCIAL VEHICLE registrations: -12.4% in 2012; -23.4% in December

In December, new commercial vehicle registrations continued the downward trend which prevailed throughout 2012, amounting to 125,825 units. Demand reached its lowest level since October 2009, at -23.4%, with downturns in major markets ranging from -15.5% in the UK to -20.3% in Italy, -21.3% in France, -24.7% in Germany and -34.2% in Spain. **From January to December**, a total of 125,825 new commercial vehicles were registered in the EU*, or 12.4% less than in 2011. The UK (-5.7%) and Germany (-7.0%) performed somewhat similarly, while the French market shrank by 10.3%, and the Spanish (-25.9%) and Italian (-31.7%) faced a more severe downturn.

New Light Commercial Vehicles up to 3.5t – "vans"

In December, the EU* registered 103,254 new vans, or 24.3% less than in the same month a year earlier. All major markets were down, from -14.2% in the UK to -19.6% in Italy, -21.7% in France, -24.3% in Germany and -32.7% in Spain. **Over twelve months**, demand for new vans declined by 13.3% in the region, totaling 1,377,283 units. Results were negative across most countries, including the largest markets: -6.0% in Germany, -7.9% in the UK, -10.6% in France, -26.3% in Spain, -32.0% in Italy.

New Heavy Commercial Vehicles over 16t (excluding Buses & Coaches) – "heavy trucks"

In December, new heavy truck registrations decreased by 21.7%. All significant markets faced a double-digit downturn, ranging from -16.4% in France to -20.2% in Italy, -21.2% in the UK, -27.1% in Germany and -39.6% in Spain. In total, the EU* recorded 14,267 new trucks in the month. **From January to December**, results were diverse as the UK slipped by 0.4%, while France and Germany saw their markets contract by 8.5% and 9.6% respectively. Spain (-20.4%) and Italy (-28.5%) experienced a sharper drop. Overall, the decline was 9.4% in the region, with 214,086 new registrations.

New Commercial Vehicles over 3.5t (excluding Buses & Coaches) – "trucks"

December results were also negative in the segment of new trucks (-22.8%), which totaled 19,309 units. All significant markets contracted severely, from -17.1% in France to -22.3% in the UK, -22.8% in Italy, -28.2% in Germany, and -40.5% in Spain. **Over the year 2012**, demand for trucks was down 9.1% in the EU*. The UK was the only major market to expand (+3.5%), while downturn prevailed in France (-7.5%), Germany (-9.8%), Spain (-21.3%) and Italy (-29.4%). In total, 285,809 new trucks were registered in the year.

New Buses & Coaches over 3.5t

In December, the EU* counted 3,262 new buses and coaches, which was 11.9% more than in the same month in the previous year. The UK (+2.0%) was the only market to expand, while Germany remained stable (-0.1%), and France (-18.1%), Italy (-53.1%) and Spain (-61.5%) recorded negative results. **From January to December**, the segment of buses and coaches was the only one to grow (+1.4%), boosted by the positive performance in the UK (+31.9%) and Germany (+1.9%). Despite a 10.9% decrease of its demand, the French market remained the second largest, after the UK and before Germany. Italy (-30.4%) and Spain (-38.7%) contracted more severely.



ACEA

Association des
Constructeurs
Européens
d'Automobiles

Av. des Nerviens 85
B-1040 Bruxelles

Tel (32 2) 732 55 50
Fax (32 2) 738 73 10
(32 2) 738 73 11

Press Release

**PRESS EMBARGO FOR ALL DATA :
8.00 A.M.(7.00 A.M. GMT), January 29, 2013**

PROVISIONAL EU' COUNTRIES REGISTRATION FIGURES BY MARKET NEW LIGHT COMMERCIAL VEHICLES up to 3.5t²

29/1/13

	December '12	December '11	% Change	Jan-Dec '12	Jan-Dec '11	% Change
AUSTRIA	2,043	2,893	-29.4%	31,508	32,531	-3.1%
BELGIUM	2,785	3,628	-23.2%	54,607	61,428	-11.1%
BULGARIA ⁴	425	206	106.3%	3,118	2,385	30.7%
CYPRUS	91	185	-50.8%	1,293	2,435	-46.9%
CZECH REPUBLIC	1,162	1,512	-23.1%	11,821	13,269	-10.9%
DENMARK	2,372	3,090	-23.2%	24,109	24,331	-0.9%
ESTONIA	175	167	4.8%	2,139	1,968	8.7%
FINLAND	734	1,754	-58.2%	11,469	14,492	-20.9%
FRANCE	30,549	39,035	-21.7%	381,233	426,654	-10.6%
GERMANY	17,217	22,758	-24.3%	219,422	233,422	-6.0%
GREECE	450	372	21.0%	3,707	6,357	-41.7%
HUNGARY	1,031	1,643	-37.2%	10,900	11,437	-4.7%
IRELAND	65	194	-66.5%	10,874	11,364	-4.3%
ITALY ³	9,550	11,873	-19.6%	116,112	170,672	-32.0%
LATVIA	177	244	-27.5%	2,236	1,755	27.4%
LITHUANIA	244	164	48.8%	1,598	1,824	-12.4%
LUXEMBURG	184	244	-24.6%	3,262	3,423	-4.7%
NETHERLANDS	1,518	1,786	-15.0%	56,576	58,670	-3.6%
POLAND	3,589	5,468	-34.4%	38,507	42,694	-9.8%
PORTUGAL	2,374	5,520	-57.0%	16,011	34,963	-54.2%
ROMANIA	553	879	-37.1%	9,389	9,440	-0.5%
SLOVAKIA	435	523	-16.8%	5,103	5,735	-11.0%
SLOVENIA	553	513	7.8%	6,412	6,482	-1.1%
SPAIN	5,833	8,671	-32.7%	76,933	104,372	-26.3%
SWEDEN	3,340	4,696	-28.9%	39,303	46,337	-15.2%
UNITED KINGDOM	15,805	18,415	-14.2%	239,641	260,153	-7.9%
EUROPEAN UNION¹	103,254	136,433	-24.3%	1,377,283	1,588,593	-13.3%
EU 15	94,819	124,929	-24.1%	1,284,767	1,489,169	-13.7%
EU 10	8,435	11,504	-26.7%	92,516	99,424	-6.9%
ICELAND	48	67	-28.4%	444	336	32.1%
NORWAY	2,611	3,995	-34.6%	31,850	35,512	-10.3%
SWITZERLAND	2,187	2,777	-21.2%	30,922	28,875	7.1%
EFTA	4,846	6,839	-29.1%	63,216	64,723	-2.3%
EU27 + EFTA	108,100	143,272	-24.5%	1,440,499	1,653,316	-12.9%
EU15 + EFTA	99,665	131,768	-24.4%	1,347,983	1,553,892	-13.3%

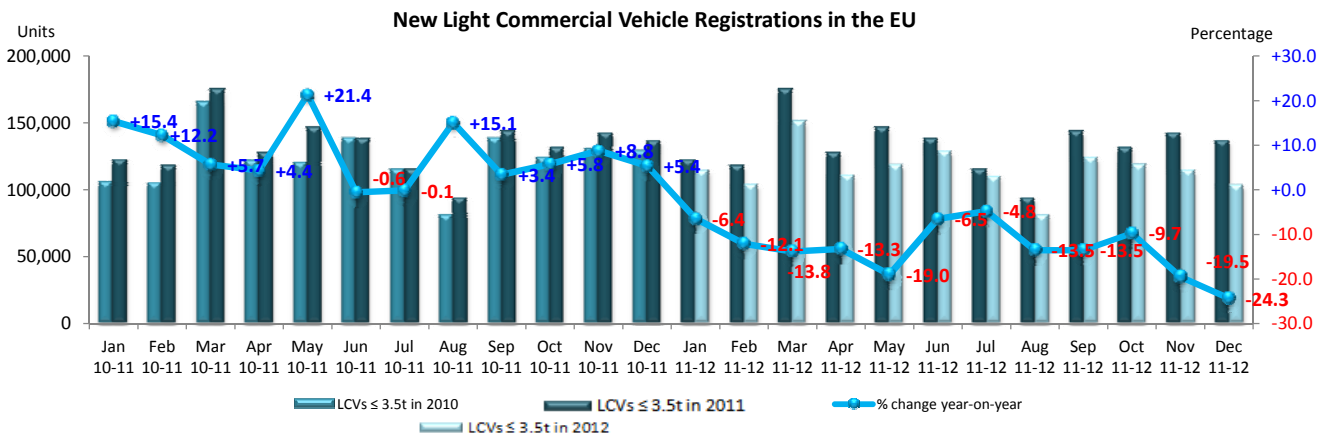
(¹) EU27; data for Malta currently not available.

(²) ANFIA estimate

For further information, please call: Ms. Quynh-Nhu Huynh - Director Economics & Statistics - Tel. + 32 2 738 73 55

(³) including Buses & Coaches

(⁴) estimate



This information is available on the ACEA website:

<http://www.acea.be>

Next Press Release on Commercial Vehicles to be issued on February 28, 2013



ACEA

Association des
Constructeurs
Européens
d'Automobiles

Av. des Nerviens 85
B-1040 Bruxelles

Tel (32 2) 732 55 50
Fax (32 2) 738 73 10
(32 2) 738 73 11

Press Release

**PRESS EMBARGO FOR ALL DATA :
8.00 A.M.(7.00 A.M. GMT), January 29, 2013**

PROVISIONAL

EU¹ + EFTA COUNTRIES REGISTRATION FIGURES BY MARKET NEW HEAVY COMMERCIAL VEHICLES of 16t and over²

29/1/13

	December '12	December '11	% Change	Jan-Dec '12	Jan-Dec '11	% Change
AUSTRIA	282	466	-39.5%	6,032	6,692	-9.9%
BELGIUM	260	296	-12.2%	6,759	7,913	-14.6%
BULGARIA	n.a.	n.a.	n.a.	n.a.	n.a.	n.a.
CYPRUS	2	4	-50.0%	54	59	-8.5%
CZECH REPUBLIC ³	362	545	-33.6%	5,585	6,293	-11.3%
DENMARK	231	225	2.7%	3,376	3,262	3.5%
ESTONIA	64	99	-35.4%	659	698	-5.6%
FINLAND	142	179	-20.7%	2,397	2,349	2.0%
FRANCE	2,637	3,154	-16.4%	36,461	39,864	-8.5%
GERMANY	3,297	4,524	-27.1%	54,444	60,213	-9.6%
GREECE	2	31	-93.5%	104	276	-62.3%
HUNGARY	264	403	-34.5%	3,783	3,891	-2.8%
IRELAND	9	12	-25.0%	909	795	14.3%
ITALY ⁴	576	722	-20.2%	9,919	13,875	-28.5%
LATVIA	59	76	-22.4%	1,508	1,407	7.2%
LITHUANIA ⁵	109	109	0.0%	2,637	2,638	0.0%
LUXEMBURG ⁵	73	63	15.9%	893	1,147	-22.1%
NETHERLANDS	1,012	502	101.6%	10,473	10,983	-4.6%
POLAND	966	1,308	-26.1%	14,045	14,555	-3.5%
PORTUGAL	98	75	30.7%	1,549	2,050	-24.4%
ROMANIA	113	300	-62.3%	2,590	3,388	-23.6%
SLOVAKIA	154	235	-34.5%	2,945	3,077	-4.3%
SLOVENIA ⁵	37	38	-2.6%	933	1,209	-22.8%
SPAIN	667	1,104	-39.6%	12,309	15,462	-20.4%
SWEDEN	402	642	-37.4%	4,885	5,315	-8.1%
UNITED KINGDOM	2,449	3,109	-21.2%	28,837	28,957	-0.4%
EUROPEAN UNION¹	14,267	18,221	-21.7%	214,086	236,368	-9.4%
EUROPEAN UNION (EU15)	12,137	15,104	-19.6%	179,347	199,153	-9.9%
EU (New Members)	2,130	3,117	-31.7%	34,739	37,215	-6.7%
ICELAND	5	15	-66.7%	61	48	27.1%
NORWAY ⁵	304	262	16.0%	4,013	3,268	22.8%
SWITZERLAND ³	128	151	-15.2%	2,896	3,258	-11.1%
EFTA	437	428	2.1%	6,970	6,574	6.0%
TOTAL EUROPE (EU+EFTA)	14,704	18,649	-21.2%	221,056	242,942	-9.0%
EU15+EFTA	12,574	15,532	-19.0%	186,317	205,727	-9.4%

(¹) EU27; data for Malta and Bulgaria currently not available.

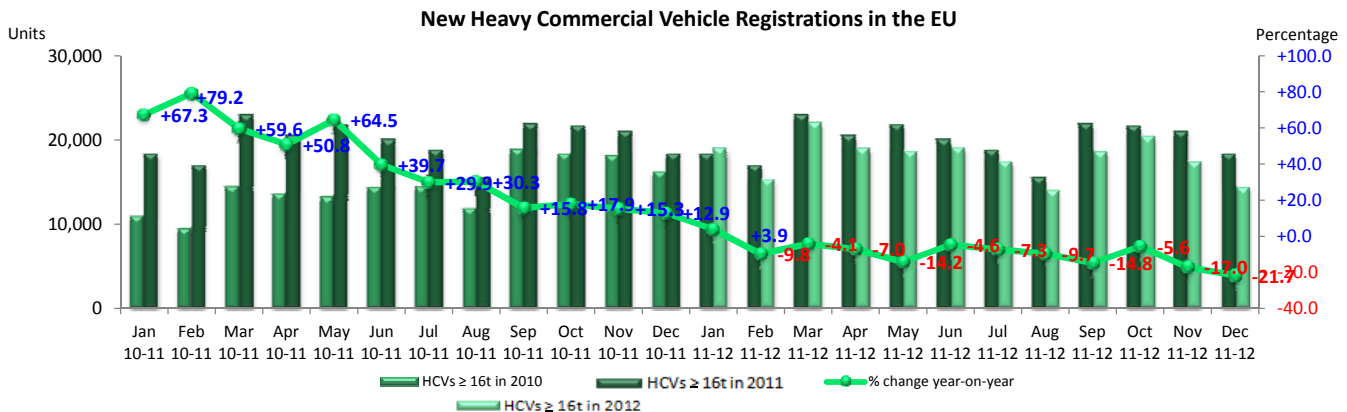
(²) Excluding Buses and Coaches

(³) CV ≥ 18t

(⁴) ANFIA estimate, based on data of the Italian Ministry of Transport

(⁵) estimates

For further information, please call: Ms. Quynh-Nhu Huynh - Director Economics & Statistics - Tel. + 32 2 738 73 55



This information is available on the ACEA website:

<http://www.acea.be>



ACEA

Association des
Constructeurs
Européens
d'Automobiles

Av. des Nerviens 85
B-1040 Bruxelles

Tel (32 2) 732 55 50
Fax (32 2) 738 73 10
(32 2) 738 73 11

Press Release

**PRESS EMBARGO FOR ALL DATA :
8.00 A.M.(7.00 A.M. GMT), January 29, 2013**

PROVISIONAL

EU¹ + EFTA COUNTRIES REGISTRATION FIGURES BY MARKET NEW MEDIUM & HEAVY COMMERCIAL VEHICLES over 3.5t²

29/1/13

	December '12	December '11	% Change	Jan-Dec '12	Jan-Dec '11	% Change
AUSTRIA	339	535	-36.6%	6,589	7,377	-10.7%
BELGIUM	334	400	-16.5%	8,474	9,883	-14.3%
BULGARIA	n.a.	n.a.	n.a.	n.a.	n.a.	n.a.
CYPRUS	18	12	50.0%	88	161	-45.3%
CZECH REPUBLIC	530	747	-29.0%	7,234	7,962	-9.1%
DENMARK	286	282	1.4%	3,770	3,676	2.6%
ESTONIA	68	104	-34.6%	726	764	-5.0%
FINLAND	201	254	-20.9%	3,252	3,413	-4.7%
FRANCE	3,370	4,067	-17.1%	45,678	49,366	-7.5%
GERMANY	5,303	7,384	-28.2%	86,937	96,358	-9.8%
GREECE	12	66	-81.8%	211	536	-60.6%
HUNGARY	291	484	-39.9%	4,158	4,316	-3.7%
IRELAND	12	20	-40.0%	1,120	1,123	-0.3%
ITALY ⁴	799	1,035	-22.8%	13,741	19,474	-29.4%
LATVIA	64	95	-32.6%	1,605	1,519	5.7%
LITHUANIA ³	134	121	10.7%	2,759	2,761	-0.1%
LUXEMBURG	78	61	27.9%	995	1,255	-20.7%
NETHERLANDS	1,096	569	92.6%	12,002	12,638	-5.0%
POLAND	1,224	1,602	-23.6%	16,436	17,105	-3.9%
PORTUGAL	136	106	28.3%	1,892	2,664	-29.0%
ROMANIA	124	331	-62.5%	2,817	3,758	-25.0%
SLOVAKIA	205	299	-31.4%	3,511	3,664	-4.2%
SLOVENIA ³	49	56	-12.5%	1,097	1,381	-20.6%
SPAIN	699	1,174	-40.5%	12,827	16,302	-21.3%
SWEDEN	479	747	-35.9%	5,610	6,128	-8.5%
UNITED KINGDOM	3,458	4,453	-22.3%	42,280	40,850	3.5%
EUROPEAN UNION¹	19,309	25,004	-22.8%	285,809	314,434	-9.1%
EUROPEAN UNION (EU15)	16,602	21,153	-21.5%	245,378	271,043	-9.5%
EU (New Members)	2,707	3,851	-29.7%	40,431	43,391	-6.8%
ICELAND	10	17	-41.2%	87	63	38.1%
NORWAY	383	348	10.1%	5,861	5,111	14.7%
SWITZERLAND	182	232	-21.6%	3,853	4,265	-9.7%
EFTA	575	597	-3.7%	9,801	9,439	3.8%
TOTAL EUROPE (EU+EFTA)	19,884	25,601	-22.3%	295,610	323,873	-8.7%
EU15+EFTA	17,177	21,750	-21.0%	255,179	280,482	-9.0%

(¹) EU27; data for Malta and Bulgaria currently not available.

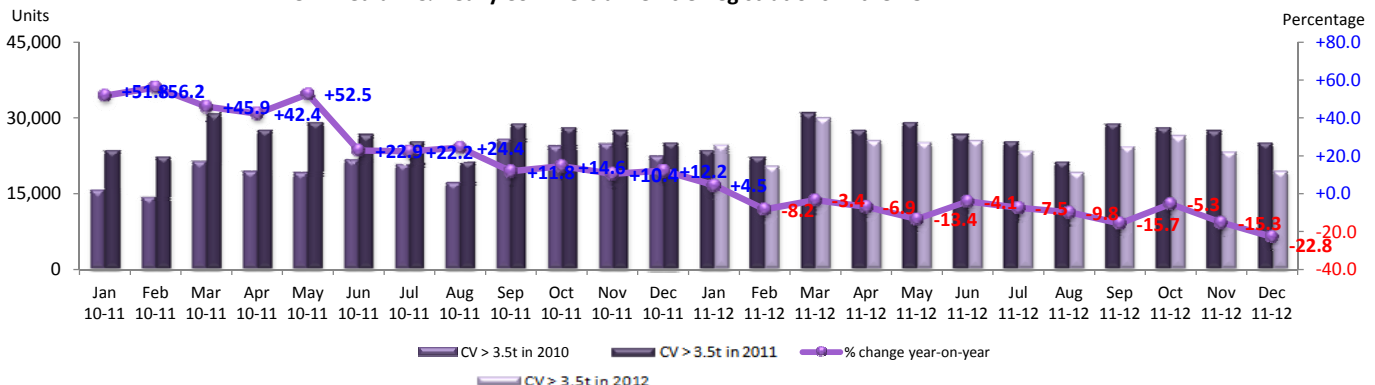
(²) Excluding Buses and Coaches

(³) estimates

(⁴) ANFIA estimate, based on data of the Italian Ministry of Transport

For further information, please call: Ms. Quynh-Nhu Huynh - Director Economics & Statistics - Tel. + 32 2 738 73 55

New Medium & Heavy Commercial Vehicle Registrations in the EU



This information is available on the ACEA website:

<http://www.acea.be>



ACEA

Association des
Constructeurs
Européens
d'Automobiles

Av. des Nerviens 85
B-1040 Bruxelles

Tel (32 2) 732 55 50
Fax (32 2) 738 73 10
(32 2) 738 73 11

Press Release

**PRESS EMBARGO FOR ALL DATA :
8.00 A.M.(7.00 A.M. GMT), January 29, 2013**

PROVISIONAL

EU¹ + EFTA COUNTRIES REGISTRATION FIGURES BY MARKET NEW MEDIUM & HEAVY BUSES & COACHES over 3.5t

29/1/13

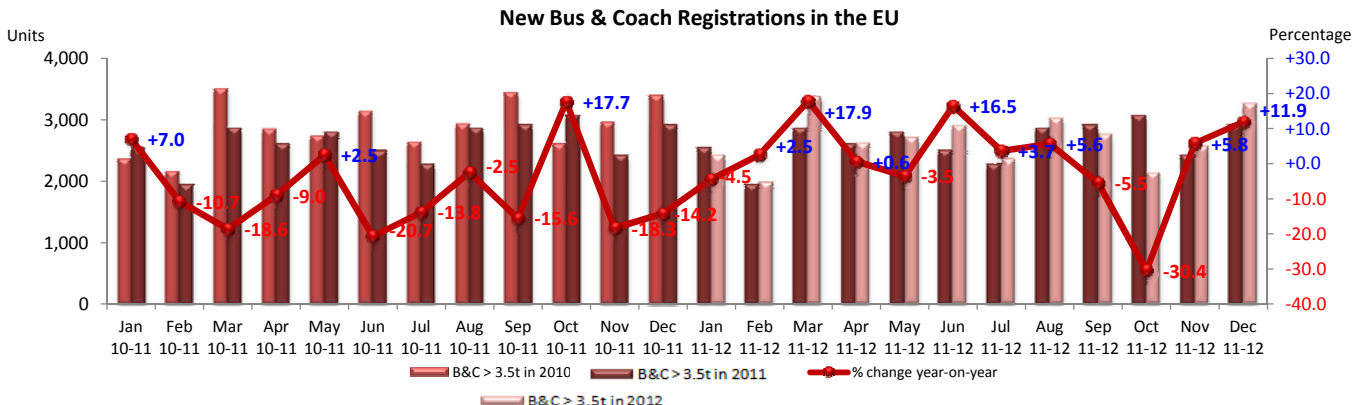
	December '12	December '11	% Change	Jan-Dec '12	Jan-Dec '11	% Change
AUSTRIA	96	86	11.6%	722	602	19.9%
BELGIUM	25	25	0.0%	701	716	-2.1%
BULGARIA	n.a.	n.a.	n.a.	n.a.	n.a.	n.a.
CYPRUS	n.a.	n.a.	n.a.	n.a.	n.a.	n.a.
CZECH REPUBLIC	76	137	-44.5%	731	837	-12.7%
DENMARK	22	49	-55.1%	506	475	6.5%
ESTONIA	1	13	-92.3%	116	55	110.9%
FINLAND	88	30	193.3%	533	398	33.9%
FRANCE	397	485	-18.1%	6,062	6,803	-10.9%
GERMANY	704	705	-0.1%	5,139	5,042	1.9%
GREECE	3	12	-75.0%	118	83	42.2%
HUNGARY	6	13	-53.8%	51	152	-66.4%
IRELAND	0	3	-100.0%	236	78	202.6%
ITALY ³	82	175	-53.1%	2,131	3,063	-30.4%
LATVIA	9	23	-60.9%	92	189	-51.3%
LITHUANIA ²	6	12	-50.0%	145	104	39.4%
LUXEMBURG	3	13	-76.9%	159	197	-19.3%
NETHERLANDS	469	230	103.9%	779	640	21.7%
POLAND	104	233	-55.4%	1,271	1,538	-17.4%
PORTUGAL	8	10	-20.0%	223	331	-32.6%
ROMANIA	472	3	15633.3%	1,463	139	952.5%
SLOVAKIA	45	50	-10.0%	307	302	1.7%
SLOVENIA ²	6	0		92	123	-25.2%
SPAIN	74	192	-61.5%	1,642	2,679	-38.7%
SWEDEN	213	70	204.3%	1,629	1,617	0.7%
UNITED KINGDOM	353	346	2.0%	7,233	5,485	31.9%
EUROPEAN UNION¹	3,262	2,915	11.9%	32,081	31,648	1.4%
EUROPEAN UNION (EU15)	2,537	2,431	4.4%	27,813	28,209	-1.4%
EU (New Members)	725	484	49.8%	4,268	3,439	24.1%
ICELAND	1	0		69	31	122.6%
NORWAY	57	191	-70.2%	1,231	1,345	-8.5%
SWITZERLAND	45	166	-72.9%	509	669	-23.9%
EFTA	103	357	-71.1%	1,809	2,045	-11.5%
TOTAL EUROPE (EU+EFTA)	3,365	3,272	2.8%	33,890	33,693	0.6%
EU15+EFTA	2,640	2,788	-5.3%	29,622	30,254	-2.1%

(¹) EU27; data for Bulgaria, Malta and Cyprus currently not available.

(²) estimates

(³) ANFIA estimate, based on data of the Italian Ministry of Transport

For further information, please call: Ms. Quynh-Nhu Huynh - Director Economics & Statistics - Tel. + 32 2 738 73 55



This information is available on the ACEA website:

<http://www.acea.be>



ACEA

Association des
Constructeurs
Européens
d'Automobiles

Av. des Nerviens 85
B-1040 Bruxelles

Tel (32 2) 732 55 50
Fax (32 2) 738 73 10
(32 2) 738 73 11

Press Release

**PRESS EMBARGO FOR ALL DATA :
8.00 A.M.(7.00 A.M. GMT), January 29, 2013**

PROVISIONAL

EU' + EFTA COUNTRIES REGISTRATION FIGURES BY MARKET TOTAL NEW COMMERCIAL VEHICLES

29/1/13

	December '12	December '11	% Change	Jan-Dec '12	Jan-Dec '11	% Change
AUSTRIA	2,478	3,514	-29.5%	38,819	40,510	-4.2%
BELGIUM	3,144	4,053	-22.4%	63,782	72,027	-11.4%
BULGARIA ⁴	425	206	106.3%	3,118	2,385	30.7%
CYPRUS ⁵	109	197	-44.7%	1,381	2,596	-46.8%
CZECH REPUBLIC	1,768	2,396	-26.2%	19,786	22,068	-10.3%
DENMARK	2,680	3,421	-21.7%	28,385	28,482	-0.3%
ESTONIA	244	284	-14.1%	2,981	2,787	7.0%
FINLAND	1,023	2,038	-49.8%	15,254	18,303	-16.7%
FRANCE	34,316	43,587	-21.3%	432,973	482,823	-10.3%
GERMANY	23,224	30,847	-24.7%	311,498	334,822	-7.0%
GREECE	465	450	3.3%	4,036	6,976	-42.1%
HUNGARY	1,328	2,140	-37.9%	15,109	15,905	-5.0%
IRELAND	77	217	-64.5%	12,230	12,565	-2.7%
ITALY ²	10,431	13,083	-20.3%	131,984	193,209	-31.7%
LATVIA	250	362	-30.9%	3,933	3,463	13.6%
LITHUANIA	384	297	29.3%	4,502	4,689	-4.0%
LUXEMBURG	265	318	-16.7%	4,416	4,875	-9.4%
NETHERLANDS	3,083	2,585	19.3%	69,357	71,948	-3.6%
POLAND	4,917	7,303	-32.7%	56,214	61,337	-8.4%
PORTUGAL	2,518	5,636	-55.3%	18,126	37,958	-52.2%
ROMANIA	1,149	1,213	-5.3%	13,669	13,337	2.5%
SLOVAKIA	685	872	-21.4%	8,921	9,701	-8.0%
SLOVENIA	608	569	6.9%	7,601	7,986	-4.8%
SPAIN	6,606	10,037	-34.2%	91,402	123,353	-25.9%
SWEDEN	4,032	5,513	-26.9%	46,542	54,082	-13.9%
UNITED KINGDOM	19,616	23,214	-15.5%	289,154	306,488	-5.7%
EUROPEAN UNION¹	125,825	164,352	-23.4%	1,695,173	1,934,675	-12.4%
EUROPEAN UNION (EU15)	113,958	148,513	-23.3%	1,557,958	1,788,421	-12.9%
EU (New Members)	11,867	15,839	-25.1%	137,215	146,254	-6.2%
ICELAND	59	84	-29.8%	600	430	39.5%
NORWAY	3,051	4,534	-32.7%	38,942	41,968	-7.2%
SWITZERLAND	2,414	3,175	-24.0%	35,284	33,809	4.4%
EFTA	5,524	7,793	-29.1%	74,826	76,207	-1.8%
TOTAL EUROPE (EU+EFTA)	131,349	172,145	-23.7%	1,769,999	2,010,882	-12.0%
EU15+EFTA	119,482	156,306	-23.6%	1,632,784	1,864,628	-12.4%

(¹) EU27; data for Malta currently not available.

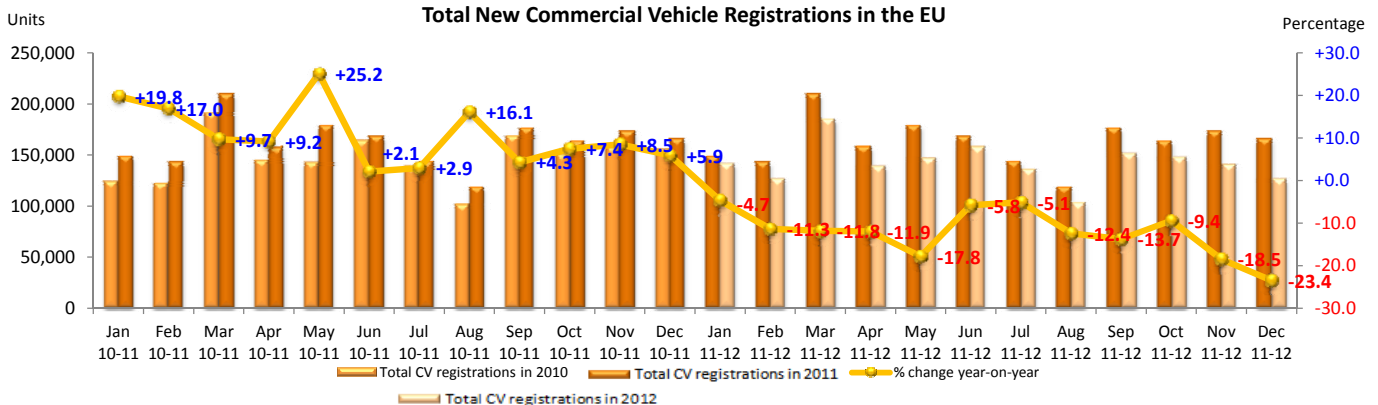
(²) estimates

(³) data for B&C n.a.

(⁴) ANFIA estimate, based on data of the Italian Ministry of Transport

(⁵) data for MCV+HCV and MBC+HBC n.a.

For further information, please call: Ms. Quynh-Nhu Huynh - Director Economics & Statistics - Tel. + 32 2 738 73 55



This information is available on the ACEA website:

<http://www.acea.be>