



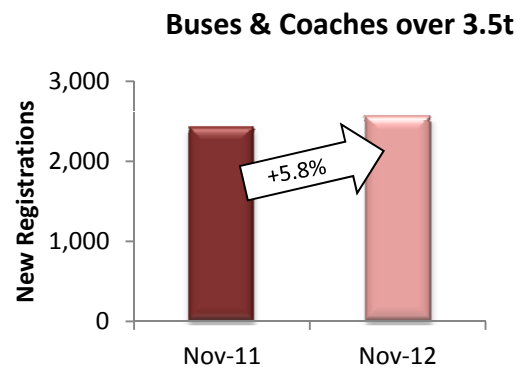
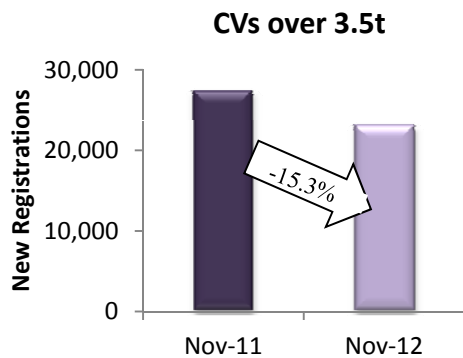
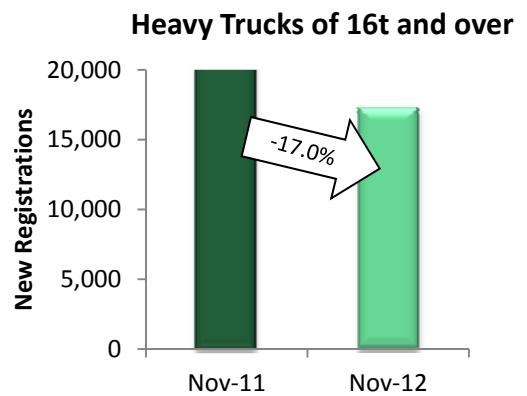
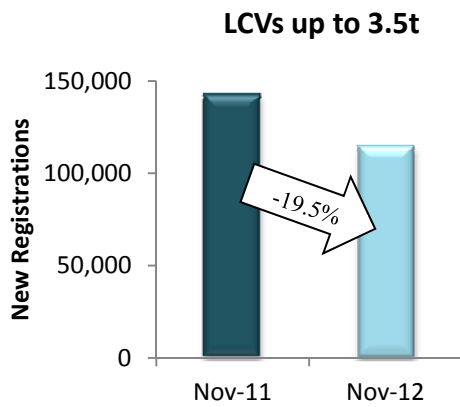
PRESS EMBARGO FOR ALL DATA:
December 20, 2012, 8.00 A.M. (7.00 A.M. GMT)

Press Release

NEW COMMERCIAL VEHICLE REGISTRATIONS

November 2012

EU Countries



Next Press Release: Tuesday, January 29, 2013

COMMERCIAL VEHICLE registrations: -11.4% over 11 months; -18.5% in November

In November, new commercial vehicle registrations were at their lowest since November 2009, dropping by 18.5% compared to the same month last year. All major markets faced a double-digit downturn ranging from -13.6% in Germany to -16.1% in the UK, -20.7% in France, -25.1% in Spain and -27.5% in Italy. **From January to November**, the EU* recorded 1,569,390 new commercial vehicles, or 11.4% less than in the same period a year ago. The UK (-4.8%), Germany (-5.2%), France (-9.2%), Spain (-25.2%) and Italy (-32.5%) all saw their markets contract.

New Light Commercial Vehicles up to 3.5t – "vans"

In November, demand for new vans was down 19.5%, amounting to 114,425 units. Only Slovenia (+4.7%), Latvia (+10.6%) and Bulgaria (+17.3%) performed better than last year. Elsewhere downturn prevailed and reached -13.1% in Germany, -16.4% in the UK, -21.6% in France, -25.2% in Spain and -27.3% in Italy. **Eleven months into the year**, new van registrations decreased by 12.3%, with a total of 1,274,014 units. All major markets shrank, from 4.0% in Germany to 7.4% in the UK, 9.5% in France, 25.7% in Spain and 32.9% in Italy.

New Heavy Commercial Vehicles over 16t (excluding Buses & Coaches) – "heavy trucks"

In November, the segment of heavy trucks fell by 17.0% with 17,277 new registrations in the EU*. All significant markets saw their demand decline: -10.5% in the UK, -16.6% in France, -23.7% in Spain, -23.9% in Germany and -31.3% in Italy. **From January to November**, results were diverse as the UK posted a 2.1% growth, compared to the same period a year earlier, while the French and German markets contracted by 7.9% and 8.2% respectively. Spain (-18.9%) and Italy (-29.0%) faced a sharper decline. Overall, 199,848 new heavy trucks were registered, or 8.4% less than in the first eleven months of 2011.

New Commercial Vehicles over 3.5t (excluding Buses & Coaches) – "trucks"

New registrations of trucks dropped by 15.3% **in November**, totaling 23,138 units. All significant markets recorded double-digit contractions. The British market shrank by 12.3%, while the German (-16.6%) and French (-16.8%) performed similarly. Spain (-22.9%) and Italy (-32.2%) were more severely hit by the downturn. **From January to November**, the UK was the only major market to expand (+6.7%). France (-6.6%), Germany (-8.2%), Spain (-19.9%) and Italy (-29.8%) saw their demand decline sharply, leading to an overall 7.9% decrease of the EU* market. In total, 266,562 new trucks were registered in the region.

New Buses & Coaches over 3.5t

In November, the segment of buses and coaches was the only one to grow (+5.8%) thanks to sustained demand in France (+38.9%) and Germany (+13.1%), which counterbalanced the 32.5% downturn recorded in the UK. **Over eleven months**, the UK was the largest market and expanded by 33.9%, while France ranked second, despite a 10.3% contraction, followed by Germany, which grew by 2.3%. Italy (-29.1%) and Spain (-37.0%) both saw their demand decline severely.



ACEA

Association des
Constructeurs
Européens
d'Automobiles

Av. des Nerviens 85
B-1040 Bruxelles

Tel (32 2) 732 55 50
Fax (32 2) 738 73 10
(32 2) 738 73 11

Press Release

**PRESS EMBARGO FOR ALL DATA :
8.00 A.M.(7.00 A.M. GMT), December 20, 2012**

PROVISIONAL EU' COUNTRIES REGISTRATION FIGURES BY MARKET NEW LIGHT COMMERCIAL VEHICLES up to 3.5t²

20/12/12

	November '12	November '11	% Change	Jan-Nov '12	Jan-Nov '11	% Change
AUSTRIA	2,482	3,289	-24.5%	29,465	29,638	-0.6%
BELGIUM	4,093	4,436	-7.7%	51,822	57,800	-10.3%
BULGARIA ⁴	326	278	17.3%	2,693	2,179	23.6%
CYPRUS	97	267	-63.7%	1,202	2,250	-46.6%
CZECH REPUBLIC	1,321	1,337	-1.2%	10,659	11,757	-9.3%
DENMARK	2,238	2,370	-5.6%	21,736	21,241	2.3%
ESTONIA	244	164	48.8%	1,964	1,801	9.1%
FINLAND	805	1,357	-40.7%	10,735	12,738	-15.7%
FRANCE	30,994	39,538	-21.6%	350,684	387,619	-9.5%
GERMANY	20,650	23,775	-13.1%	202,205	210,664	-4.0%
GREECE	320	437	-26.8%	3,257	5,985	-45.6%
HUNGARY	951	1,347	-29.4%	9,867	9,794	0.7%
IRELAND	285	305	-6.6%	10,814	11,170	-3.2%
ITALY ³	9,600	13,204	-27.3%	106,510	158,804	-32.9%
LATVIA	198	179	10.6%	2,059	1,511	36.3%
LITHUANIA	145	179	-19.0%	1,354	1,660	-18.4%
LUXEMBURG	242	287	-15.7%	3,078	3,179	-3.2%
NETHERLANDS	4,091	5,412	-24.4%	55,092	56,884	-3.2%
POLAND	3,652	4,231	-13.7%	34,918	37,226	-6.2%
PORTUGAL	1,506	3,003	-49.9%	13,633	29,443	-53.7%
ROMANIA	700	871	-19.6%	8,836	8,561	3.2%
SLOVAKIA	451	465	-3.0%	4,668	5,212	-10.4%
SLOVENIA	576	550	4.7%	5,859	5,969	-1.8%
SPAIN	6,071	8,121	-25.2%	71,105	95,701	-25.7%
SWEDEN	3,412	4,045	-15.6%	35,963	41,641	-13.6%
UNITED KINGDOM	18,975	22,684	-16.4%	223,836	241,738	-7.4%
EUROPEAN UNION¹	114,425	142,131	-19.5%	1,274,014	1,452,165	-12.3%
EU 15	105,764	132,263	-20.0%	1,189,935	1,364,245	-12.8%
EU 10	8,661	9,868	-12.2%	84,079	87,920	-4.4%
ICELAND	43	37	16.2%	396	277	43.0%
NORWAY	2,685	3,540	-24.2%	29,239	31,517	-7.2%
SWITZERLAND	2,681	2,690	-0.3%	28,735	26,098	10.1%
EFTA	5,409	6,267	-13.7%	58,370	57,892	0.8%
EU27 + EFTA	119,834	148,398	-19.2%	1,332,384	1,510,057	-11.8%
EU15 + EFTA	111,173	138,530	-19.7%	1,248,305	1,422,137	-12.2%

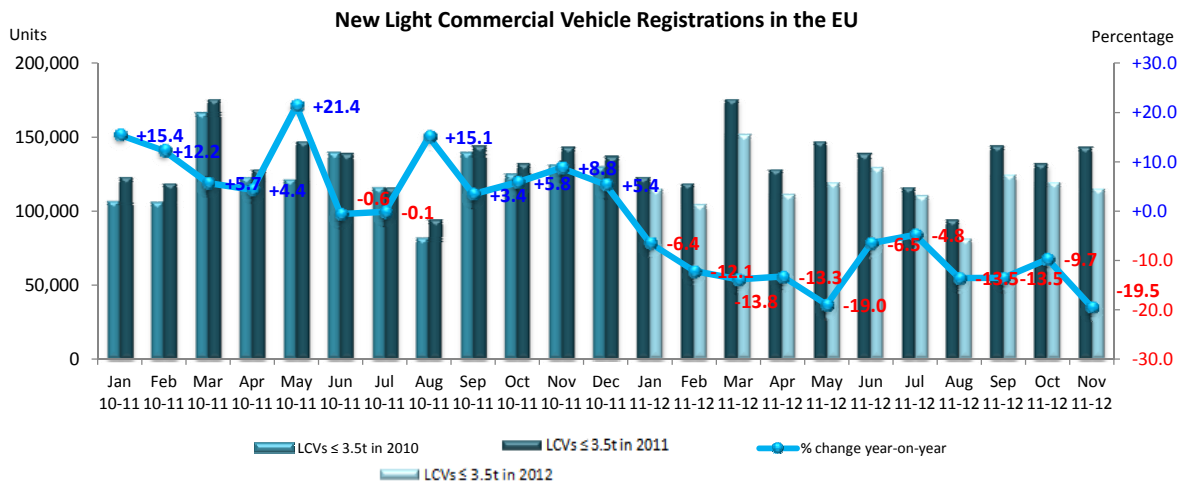
(¹) EU27: data for Malta currently not available.

(²) ANFIA estimate

For further information, please call: Ms. Quynh-Nhu Huynh - Director Economics & Statistics - Tel. + 32 2 738 73 55

(³) including Buses & Coaches

(⁴) estimate



Next Press Release on Commercial Vehicles to be issued on January 29, 2013



ACEA

Association des
Constructeurs
Européens
d'Automobiles

Av. des Nerviens 85
B-1040 Bruxelles

Tel (32 2) 732 55 50
Fax (32 2) 738 73 10
(32 2) 738 73 11

Press Release

**PRESS EMBARGO FOR ALL DATA :
8.00 A.M.(7.00 A.M. GMT), December 20, 2012**

PROVISIONAL

EU¹ + EFTA COUNTRIES REGISTRATION FIGURES BY MARKET NEW HEAVY COMMERCIAL VEHICLES of 16t and over²

20/12/12

	November '12	November '11	% Change	Jan-Nov '12	Jan-Nov '11	% Change
AUSTRIA	417	524	-20.4%	5,750	6,226	-7.6%
BELGIUM	347	556	-37.6%	6,499	7,617	-14.7%
BULGARIA	n.a.	n.a.	n.a.	n.a.	n.a.	n.a.
CYPRUS	1	1	0.0%	52	55	-5.5%
CZECH REPUBLIC ³	509	640	-20.5%	5,223	5,748	-9.1%
DENMARK	227	289	-21.5%	3,145	3,037	3.6%
ESTONIA	74	63	17.5%	595	599	-0.7%
FINLAND	167	220	-24.1%	2,255	2,170	3.9%
FRANCE	2,857	3,424	-16.6%	33,824	36,710	-7.9%
GERMANY	4,072	5,354	-23.9%	51,147	55,689	-8.2%
GREECE	5	23	-78.3%	102	245	-58.4%
HUNGARY	332	311	6.8%	3,519	3,488	0.9%
IRELAND	23	46	-50.0%	900	783	14.9%
ITALY ⁴	679	988	-31.3%	9,343	13,153	-29.0%
LATVIA	71	78	-9.0%	1,449	1,331	8.9%
LITHUANIA ⁵	173	165	4.8%	2,543	2,529	0.6%
LUXEMBURG ⁵	61	91	-33.0%	820	1,084	-24.4%
NETHERLANDS	715	760	-5.9%	9,461	10,480	-9.7%
POLAND	1,338	1,228	9.0%	13,080	13,247	-1.3%
PORTUGAL	169	108	56.5%	1,451	1,975	-26.5%
ROMANIA	221	351	-37.0%	2,477	3,088	-19.8%
SLOVAKIA	175	210	-16.7%	2,791	2,842	-1.8%
SLOVENIA ⁵	100	99	1.0%	909	1,171	-22.4%
SPAIN	1,289	1,690	-23.7%	11,642	14,358	-18.9%
SWEDEN	480	500	-4.0%	4,483	4,673	-4.1%
UNITED KINGDOM	2,775	3,099	-10.5%	26,388	25,848	2.1%
EUROPEAN UNION¹	17,277	20,818	-17.0%	199,848	218,146	-8.4%
EUROPEAN UNION (EU15)	14,283	17,672	-19.2%	167,210	184,048	-9.1%
EU (New Members)	2,994	3,146	-4.8%	32,638	34,098	-4.3%
ICELAND	4	4	0.0%	56	33	69.7%
NORWAY ⁵	385	313	23.0%	3,709	3,006	23.4%
SWITZERLAND ³	192	261	-26.4%	2,768	3,107	-10.9%
EFTA	581	578	0.5%	6,533	6,146	6.3%
TOTAL EUROPE (EU+EFTA)	17,858	21,396	-16.5%	206,381	224,292	-8.0%
EU15+EFTA	14,864	18,250	-18.6%	173,743	190,194	-8.6%

(¹) EU27; data for Malta and Bulgaria currently not available.

(²) Excluding Buses and Coaches

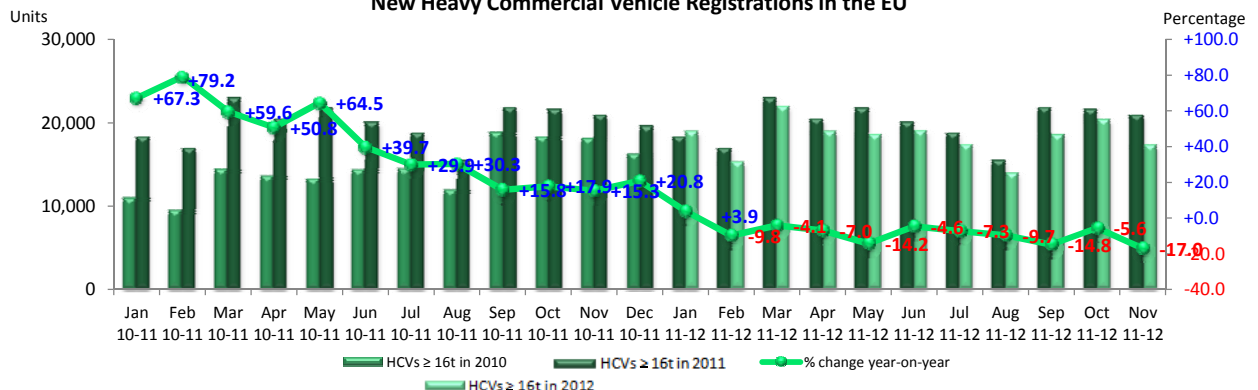
(³) CV ≥ 18t

(⁴) ANFIA estimate, based on data of the Italian Ministry of Transport

(⁵) estimates

For further information, please call: Ms. Quvnh-Nhu Huvnh - Director Economics & Statistics - Tel. + 32 2 738 73 55

New Heavy Commercial Vehicle Registrations in the EU



This information is available on the ACEA website:

<http://www.acea.be>



ACEA

Association des
Constructeurs
Européens
d'Automobiles

Av. des Nerviens 85
B-1040 Bruxelles

Tel (32 2) 732 55 50
Fax (32 2) 738 73 10
(32 2) 738 73 11

Press Release

**PRESS EMBARGO FOR ALL DATA :
8.00 A.M.(7.00 A.M. GMT), December 20, 2012**

PROVISIONAL

EU¹ + EFTA COUNTRIES REGISTRATION FIGURES BY MARKET NEW MEDIUM & HEAVY COMMERCIAL VEHICLES over 3.5t²

20/12/12

	November '12	November '11	% Change	Jan-Nov '12	Jan-Nov '11	% Change
AUSTRIA	468	572	-18.2%	6,250	6,842	-8.7%
BELGIUM	438	703	-37.7%	8,140	9,483	-14.2%
BULGARIA	n.a.	n.a.	n.a.	n.a.	n.a.	n.a.
CYPRUS	1	6	-83.3%	70	149	-53.0%
CZECH REPUBLIC	676	778	-13.1%	6,704	7,215	-7.1%
DENMARK	262	341	-23.2%	3,484	3,415	2.0%
ESTONIA	75	69	8.7%	658	660	-0.3%
FINLAND	244	306	-20.3%	3,050	3,159	-3.5%
FRANCE	3,498	4,203	-16.8%	42,308	45,299	-6.6%
GERMANY	6,985	8,372	-16.6%	81,634	88,974	-8.2%
GREECE	30	30	0.0%	199	470	-57.7%
HUNGARY	362	350	3.4%	3,879	3,832	1.2%
IRELAND	35	57	-38.6%	1,108	1,103	0.5%
ITALY ⁴	937	1,381	-32.2%	12,941	18,439	-29.8%
LATVIA	73	90	-18.9%	1,541	1,424	8.2%
LITHUANIA ³	177	176	0.6%	2,631	2,640	-0.3%
LUXEMBURG	71	92	-22.8%	917	1,194	-23.2%
NETHERLANDS	828	893	-7.3%	10,944	12,069	-9.3%
POLAND	1,611	1,450	11.1%	15,212	15,503	-1.9%
PORTUGAL	208	144	44.4%	1,756	2,558	-31.4%
ROMANIA	239	382	-37.4%	2,693	3,427	-21.4%
SLOVAKIA	205	267	-23.2%	3,306	3,365	-1.8%
SLOVENIA ³	110	113	-2.7%	1,061	1,325	-19.9%
SPAIN	1,341	1,739	-22.9%	12,123	15,128	-19.9%
SWEDEN	560	586	-4.4%	5,131	5,381	-4.6%
UNITED KINGDOM	3,704	4,224	-12.3%	38,822	36,397	6.7%
EUROPEAN UNION¹	23,138	27,324	-15.3%	266,562	289,451	-7.9%
EUROPEAN UNION (EU15)	19,609	23,643	-17.1%	228,807	249,911	-8.4%
EU (New Members)	3,529	3,681	-4.1%	37,755	39,540	-4.5%
ICELAND	4	5	-20.0%	77	46	67.4%
NORWAY	486	403	20.6%	5,478	4,763	15.0%
SWITZERLAND	277	332	-16.6%	3,671	4,033	-9.0%
EFTA	767	740	3.6%	9,226	8,842	4.3%
TOTAL EUROPE (EU+EFTA)	23,905	28,064	-14.8%	275,788	298,293	-7.5%
EU15+EFTA	20,376	24,383	-16.4%	238,033	258,753	-8.0%

(¹) EU27; data for Malta and Bulgaria currently not available.

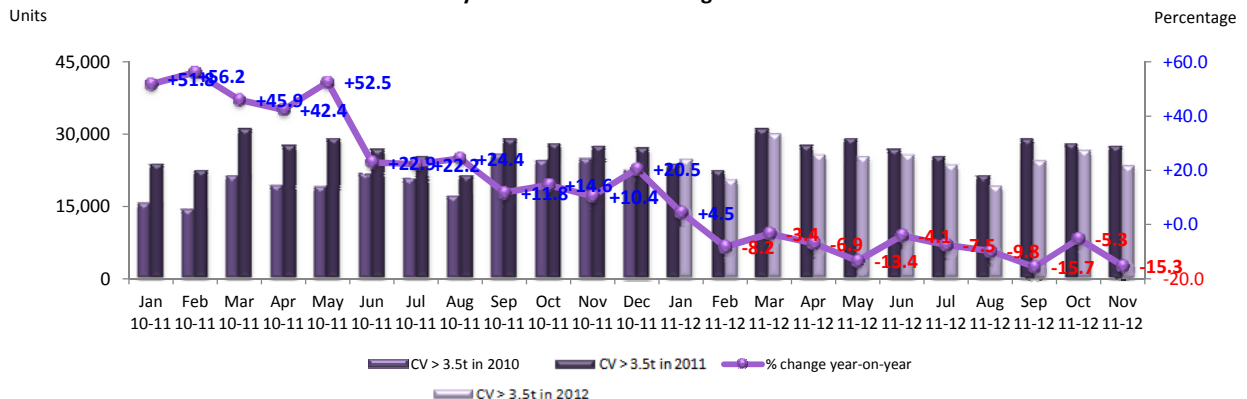
(²) Excluding Buses and Coaches

(³) estimates

(⁴) ANFIA estimate, based on data of the Italian Ministry of Transport

For further information, please call: Ms. Quynh-Nhu Huynh - Director Economics & Statistics - Tel. + 32 2 738 73 55

New Medium & Heavy Commercial Vehicle Registrations in the EU



This information is available on the ACEA website:

<http://www.acea.be>



ACEA

Association des
Constructeurs
Européens
d'Automobiles

Av. des Nerviens 85
B-1040 Bruxelles

Tel (32 2) 732 55 50
Fax (32 2) 738 73 10
(32 2) 738 73 11

Press Release

**PRESS EMBARGO FOR ALL DATA :
8.00 A.M.(7.00 A.M. GMT), December 20, 2012**

PROVISIONAL

EU¹ + EFTA COUNTRIES REGISTRATION FIGURES BY MARKET NEW MEDIUM & HEAVY BUSES & COACHES over 3.5t

20/12/12

	November '12	November '11	% Change	Jan-Nov '12	Jan-Nov '11	% Change
AUSTRIA	42	55	-23.6%	626	516	21.3%
BELGIUM	25	13	92.3%	676	691	-2.2%
BULGARIA	n.a.	n.a.	n.a.	n.a.	n.a.	n.a.
CYPRUS	n.a.	n.a.	n.a.	n.a.	n.a.	n.a.
CZECH REPUBLIC	82	76	7.9%	655	700	-6.4%
DENMARK	63	55	14.5%	484	426	13.6%
ESTONIA	1	2	-50.0%	115	42	173.8%
FINLAND	28	14	100.0%	445	368	20.9%
FRANCE	486	350	38.9%	5,665	6,318	-10.3%
GERMANY	577	510	13.1%	4,435	4,337	2.3%
GREECE	0	0		115	71	62.0%
HUNGARY	5	7	-28.6%	44	139	-68.3%
IRELAND	3	0		236	78	202.6%
ITALY ³	177	183	-3.3%	2,049	2,888	-29.1%
LATVIA	5	6	-16.7%	82	167	-50.9%
LITHUANIA ²	6	6	0.0%	125	92	35.9%
LUXEMBURG	21	15	40.0%	156	184	-15.2%
NETHERLANDS	42	52	-19.2%	309	410	-24.6%
POLAND	150	170	-11.8%	1,167	1,305	-10.6%
PORTUGAL	3	13	-76.9%	215	321	-33.0%
ROMANIA	202	10	1920.0%	991	136	628.7%
SLOVAKIA	46	33	39.4%	262	252	4.0%
SLOVENIA ²	14	25	-44.0%	98	123	-20.3%
SPAIN	90	155	-41.9%	1,568	2,487	-37.0%
SWEDEN	103	84	22.6%	1,416	1,547	-8.5%
UNITED KINGDOM	394	584	-32.5%	6,880	5,139	33.9%
EUROPEAN UNION¹	2,565	2,418	6.1%	28,814	28,737	0.3%
EUROPEAN UNION (EU15)	2,054	2,083	-1.4%	25,275	25,781	-2.0%
EU (New Members)	511	335	52.5%	3,539	2,956	19.7%
ICELAND	5	0		68	31	119.4%
NORWAY	42	150	-72.0%	1,174	1,154	1.7%
SWITZERLAND	58	45	28.9%	464	503	-7.8%
EFTA	105	195	-46.2%	1,706	1,688	1.1%
TOTAL EUROPE (EU+EFTA)	2,670	2,613	2.2%	30,520	30,425	0.3%
EU15+EFTA	2,159	2,278	-5.2%	26,981	27,469	-1.8%

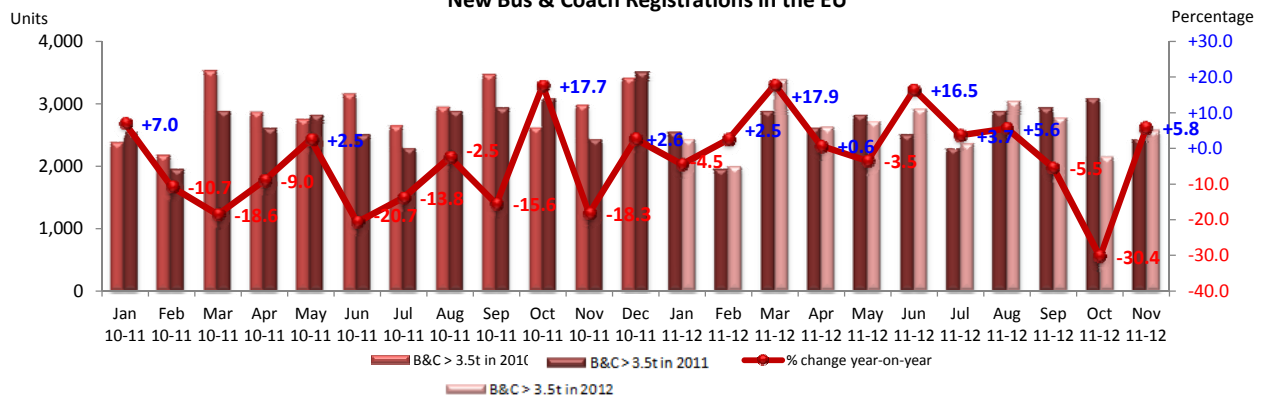
(¹) EU27; data for Bulgaria, Malta and Cyprus currently not available.

(²) estimates

(³) ANFIA estimate, based on data of the Italian Ministry of Transport

For further information, please call: Ms. Quynh-Nhu Huynh - Director Economics & Statistics - Tel. + 32 2 738 73 55

New Bus & Coach Registrations in the EU



This information is available on the ACEA website:

<http://www.acea.be>



ACEA

Association des
Constructeurs
Européens
d'Automobiles

Av. des Nerviens 85
B-1040 Bruxelles

Tel (32 2) 732 55 50
Fax (32 2) 738 73 10
(32 2) 738 73 11

Press Release

**PRESS EMBARGO FOR ALL DATA :
8.00 A.M.(7.00 A.M. GMT), December 20, 2012**

PROVISIONAL EU¹ + EFTA COUNTRIES REGISTRATION FIGURES BY MARKET TOTAL NEW COMMERCIAL VEHICLES

20/12/12

	November '12	November '11	% Change	Jan-Nov '12	Jan-Nov '11	% Change
AUSTRIA	2,992	3,916	-23.6%	36,341	36,996	-1.8%
BELGIUM	4,556	5,152	-11.6%	60,638	67,974	-10.8%
BULGARIA ⁴	326	278	17.3%	2,693	2,179	23.6%
CYPRUS ⁵	98	273	-64.1%	1,272	2,399	-47.0%
CZECH REPUBLIC	2,079	2,191	-5.1%	18,018	19,672	-8.4%
DENMARK	2,563	2,766	-7.3%	25,704	25,082	2.5%
ESTONIA	320	235	36.2%	2,737	2,503	9.3%
FINLAND	1,077	1,677	-35.8%	14,230	16,265	-12.5%
FRANCE	34,978	44,091	-20.7%	398,657	439,236	-9.2%
GERMANY	28,212	32,657	-13.6%	288,274	303,975	-5.2%
GREECE	350	467	-25.1%	3,571	6,526	-45.3%
HUNGARY	1,318	1,704	-22.7%	13,790	13,765	0.2%
IRELAND	323	362	-10.8%	12,158	12,351	-1.6%
ITALY ²	10,714	14,768	-27.5%	121,500	180,131	-32.5%
LATVIA	276	275	0.4%	3,682	3,102	18.7%
LITHUANIA	328	361	-9.1%	4,110	4,392	-6.4%
LUXEMBURG	334	394	-15.2%	4,151	4,557	-8.9%
NETHERLANDS	4,961	6,357	-22.0%	66,345	69,363	-4.4%
POLAND	5,413	5,851	-7.5%	51,297	54,034	-5.1%
PORTUGAL	1,717	3,160	-45.7%	15,604	32,322	-51.7%
ROMANIA	1,141	1,263	-9.7%	12,520	12,124	3.3%
SLOVAKIA	702	765	-8.2%	8,236	8,829	-6.7%
SLOVENIA	700	688	1.7%	7,018	7,417	-5.4%
SPAIN	7,502	10,015	-25.1%	84,796	113,316	-25.2%
SWEDEN	4,075	4,715	-13.6%	42,510	48,569	-12.5%
UNITED KINGDOM	23,073	27,492	-16.1%	269,538	283,274	-4.8%
EUROPEAN UNION¹	140,128	171,873	-18.5%	1,569,390	1,770,353	-11.4%
EUROPEAN UNION (EU15)	127,427	157,989	-19.3%	1,444,017	1,639,937	-11.9%
EU (New Members)	12,701	13,884	-8.5%	125,373	130,416	-3.9%
ICELAND	52	42	23.8%	541	354	52.8%
NORWAY	3,213	4,093	-21.5%	35,891	37,434	-4.1%
SWITZERLAND	3,016	3,067	-1.7%	32,870	30,634	7.3%
EFTA	6,281	7,202	-12.8%	69,302	68,422	1.3%
TOTAL EUROPE (EU+EFTA)	146,409	179,075	-18.2%	1,638,692	1,838,775	-10.9%
EU15+EFTA	133,708	165,191	-19.1%	1,513,319	1,708,359	-11.4%

(¹) EU27; data for Malta currently not available.

(²) estimates

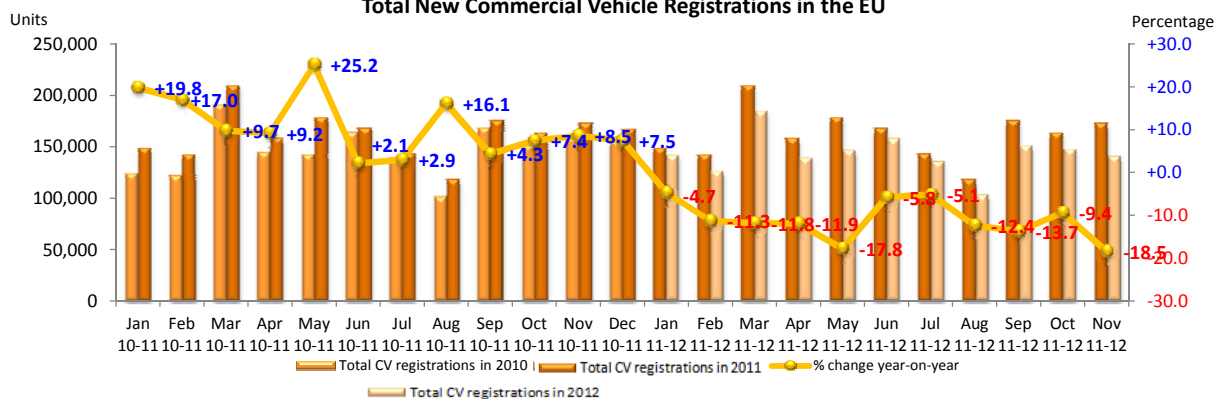
(³) data for B&C n.a.

(⁴) ANFIA estimate, based on data of the Italian Ministry of Transport

(⁵) data for MCV+HCV and MBC+HBC n.a.

For further information, please call: Ms. Quynh-Nhu Huynh - Director Economics & Statistics - Tel. + 32 2 738 73 55

Total New Commercial Vehicle Registrations in the EU



This information is available on the ACEA website:

<http://www.acea.be>