



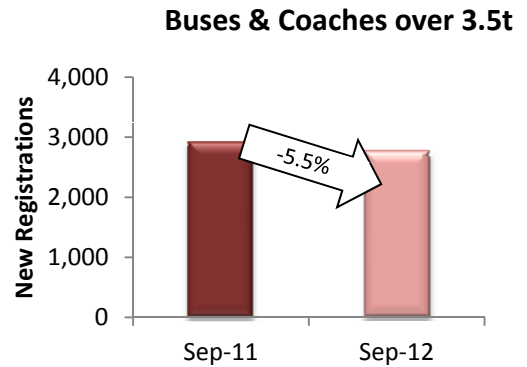
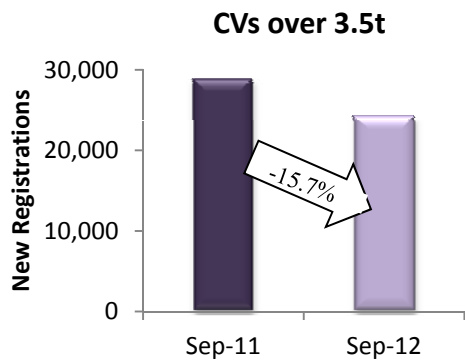
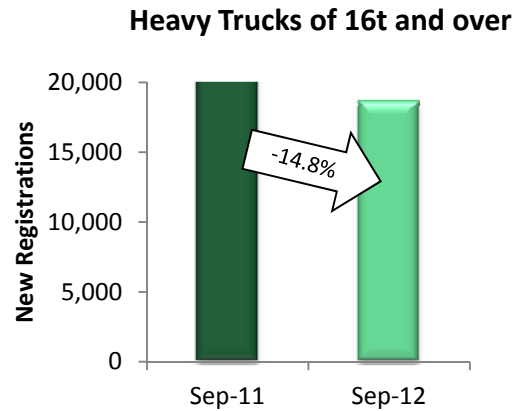
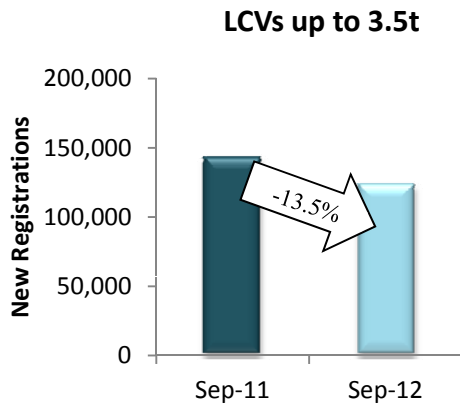
**PRESS EMBARGO FOR ALL DATA:  
October 26, 2012, 8.00 A.M. (6.00 A.M. GMT)**

# Press Release

## NEW COMMERCIAL VEHICLE REGISTRATIONS

### September 2012

#### *EU Countries*



**Next Press Release: Tuesday, November 27, 2012**

## COMMERCIAL VEHICLE registrations: -10.7% over nine months; -13.7% in September

**In September**, a total of 150,910 new commercial vehicles were registered in the EU\*, which is 13.7% less than in the same month last year. Downturn prevailed across markets, ranging from -3.2% in Ireland to -51.2% in Greece. Looking at the largest markets, the UK was the only one to expand (+0.7%) while France (-13.4%), Germany (-16.6%), Italy (-28.2%) and Spain (-32.7%) all contracted.

**From January to September**, demand for commercial vehicles was down by 10.7%, with 1,282,248 new registrations. All major markets recorded negative figures: -3.1% in the UK, -4.2% in Germany, -7.7% in France, -25.7% in Spain, -34.6% in Italy.

### **New Light Commercial Vehicles up to 3.5t – "vans"**

**In September**, demand for new vans declined across the EU\*, except in Slovakia (+9.5%) and the UK (+1.1%), resulting in an overall 13.5% decrease. France (-12.4%), Germany (-14.6%), Italy (-27.6%) and Spain (-34.3%) all faced a double digit downturn. In total, the region counted 123,938 new vans in the month. **From January to September**, 1,041,028 new vans were registered in the EU\*, or 11.7% less than in the first nine months of 2011. Looking at the most important markets, Germany (-2.8%), France (-8.0%), the UK (-6.3%), Spain (-25.9%) and Italy (-35.2%) all performed less well than last year.

### **New Heavy Commercial Vehicles over 16t (excluding Buses & Coaches) – "heavy trucks"**

**In September**, the EU\* recorded 18,529 new heavy trucks, or 14.8% less than in September 2011. All significant markets contracted, from -6.7% in the UK to -18.6% in France, -22.9% in Germany, -28.6% in Spain and -33.8% in Italy. **Nine months into the year**, the decline was 7.7%, with a total of 162,355 new registrations. The UK was the only major market to expand (+5.9%), while the German (-6.7%), French (-7.2%), Spanish (-21.0%) and Italian (-29.7%) declined.

### **New Commercial Vehicles over 3.5t (excluding Buses & Coaches) – "trucks"**

The segment of trucks recorded the sharpest downturn **in September** (-15.7%), with 24,217 new registrations in the EU\*. The UK (-7.3%), France (-19.7%), Germany (-20.4%), Spain (-30.6%) and Italy (-34.1%) all saw their market contract. **In the first three quarters of the year**, demand for new trucks in the EU\* fell by 7.3%, amounting to 217,104 units. While the UK posted growth (+11.3%), France (-5.8%) and Germany (-7.7%) similarly shrank, and Spain (-22.3%) and Italy (-30.5%) faced more severe contractions.

### **New Buses & Coaches over 3.5t**

**September results** in the segment of buses and coaches were diverse across countries, leading to an overall 5.5% contraction of the EU\* market. While the UK (+43.3%) and Spain (+5.3%) performed better than in the same month last year, France (-22.7%), Germany (-26.3%) and Italy (-26.6%) experienced a double-digit downturn. **From January to September**, the segment of buses and coaches was the only one to grow (+3.7%), mainly sustained by demand in the UK (+55.0%) and Germany (+2.2%), while the French (-6.4%), Italian (-31.9%) and Spanish (-37.0%) markets contracted.



ACEA

Association des  
Constructeurs  
Européens  
d'Automobiles

Av. des Nerviens 85  
B-1040 Bruxelles

Tel (32 2) 732 55 50  
Fax (32 2) 738 73 10  
(32 2) 738 73 11

# Press Release

**PRESS EMBARGO FOR ALL DATA :  
8.00 A.M.(6.00 A.M. GMT), October 26, 2012**

## PROVISIONAL EU' COUNTRIES REGISTRATION FIGURES BY MARKET NEW LIGHT COMMERCIAL VEHICLES up to 3.5t<sup>2</sup>

26/10/12

	September '12	September '11	% Change	Jan-Sep '12	Jan-Sep '11	% Change
AUSTRIA	2,321	2,463	-5.8%	24,353	23,673	2.9%
BELGIUM	3,820	4,681	-18.4%	42,706	48,689	-12.3%
BULGARIA <sup>4</sup>	228	253	-9.9%	2,239	2,126	5.3%
CYPRUS	93	143	-35.0%	1,000	1,755	-43.0%
CZECH REPUBLIC	985	1,167	-15.6%	8,286	9,199	-9.9%
DENMARK	1,749	2,330	-24.9%	17,383	17,045	2.0%
ESTONIA	165	213	-22.5%	1,525	1,442	5.8%
FINLAND	825	1,190	-30.7%	9,067	10,181	-10.9%
FRANCE	29,933	34,188	-12.4%	284,812	309,550	-8.0%
GERMANY	16,582	19,416	-14.6%	161,826	166,450	-2.8%
GREECE	224	461	-51.4%	2,595	5,152	-49.6%
HUNGARY	834	941	-11.4%	8,071	7,513	7.4%
IRELAND	679	705	-3.7%	9,999	10,263	-2.6%
ITALY <sup>3</sup>	8,600	11,874	-27.6%	85,910	132,514	-35.2%
LATVIA	161	181	-11.0%	1,660	1,152	44.1%
LITHUANIA	69	201	-65.7%	1,082	1,310	-17.4%
LUXEMBURG	196	284	-31.0%	2,526	2,600	-2.8%
NETHERLANDS	3,837	4,595	-16.5%	46,632	46,436	0.4%
POLAND	2,547	3,458	-26.3%	27,921	29,518	-5.4%
PORTUGAL	1,116	2,436	-54.2%	10,819	24,108	-55.1%
ROMANIA	713	746	-4.4%	7,419	6,812	8.9%
SLOVAKIA	483	441	9.5%	3,716	4,209	-11.7%
SLOVENIA	483	502	-3.8%	4,736	4,837	-2.1%
SPAIN	4,999	7,612	-34.3%	58,769	79,296	-25.9%
SWEDEN	3,236	4,188	-22.7%	28,909	33,437	-13.5%
UNITED KINGDOM	39,060	38,644	1.1%	187,067	199,684	-6.3%
<b>EUROPEAN UNION<sup>1</sup></b>	<b>123,938</b>	<b>143,313</b>	<b>-13.5%</b>	<b>1,041,028</b>	<b>1,178,951</b>	<b>-11.7%</b>
<b>EU 15</b>	<b>117,177</b>	<b>135,067</b>	<b>-13.2%</b>	<b>973,373</b>	<b>1,109,078</b>	<b>-12.2%</b>
<b>EU 10</b>	<b>6,761</b>	<b>8,246</b>	<b>-18.0%</b>	<b>67,655</b>	<b>69,873</b>	<b>-3.2%</b>
ICELAND	29	21	38.1%	313	205	52.7%
NORWAY	2,562	2,936	-12.7%	23,674	25,077	-5.6%
SWITZERLAND	2,209	2,241	-1.4%	23,273	21,120	10.2%
EFTA	4,800	5,198	-7.7%	47,260	46,402	1.8%
<b>EU27 + EFTA</b>	<b>128,738</b>	<b>148,511</b>	<b>-13.3%</b>	<b>1,088,288</b>	<b>1,225,353</b>	<b>-11.2%</b>
<b>EU15 + EFTA</b>	<b>121,977</b>	<b>140,265</b>	<b>-13.0%</b>	<b>1,020,633</b>	<b>1,155,480</b>	<b>-11.7%</b>

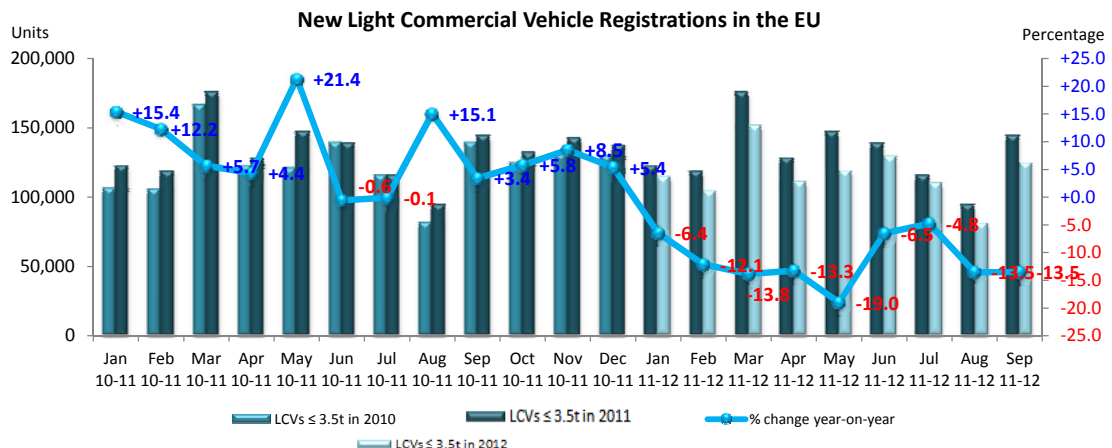
(<sup>1</sup>) EU27; data for Malta currently not available.

(<sup>2</sup>) ANFIA estimate

(\*) including Buses & Coaches

(\*) estimate

For further information, please call: Ms. Quynh-Nhu Huynh - Director Economics & Statistics - Tel. + 32 2 738 73 55



This information is available on the ACEA website:

<http://www.acea.be>

**Next Press Release on Commercial Vehicles to be issued on November 27, 2012**



ACEA

Association des  
Constructeurs  
Européens  
d'Automobiles

Av. des Nerviens 85  
B-1040 Bruxelles

Tel (32 2) 732 55 50  
Fax (32 2) 738 73 10  
(32 2) 738 73 11

# Press Release

**PRESS EMBARGO FOR ALL DATA :  
8.00 A.M.(6.00 A.M. GMT), October 26, 2012**

## PROVISIONAL

### EU<sup>1</sup> + EFTA COUNTRIES REGISTRATION FIGURES BY MARKET NEW HEAVY COMMERCIAL VEHICLES of 16t and over<sup>2</sup>

26/10/12

	September '12	September '11	% Change	Jan-Sep '12	Jan-Sep '11	% Change
AUSTRIA	463	574	-19.3%	4,784	5,200	-8.0%
BELGIUM	689	754	-8.6%	5,565	6,413	-13.2%
BULGARIA	n.a.	n.a.	n.a.	n.a.	n.a.	n.a.
CYPRUS	1	1	0.0%	50	47	6.4%
CZECH REPUBLIC <sup>3</sup>	681	624	9.1%	4,078	4,450	-8.4%
DENMARK	230	310	-25.8%	2,662	2,487	7.0%
ESTONIA	60	49	22.4%	408	471	-13.4%
FINLAND	186	206	-9.7%	1,856	1,729	7.3%
FRANCE	2,753	3,383	-18.6%	27,548	29,686	-7.2%
GERMANY	4,428	5,741	-22.9%	42,585	45,653	-6.7%
GREECE	9	11	-18.2%	88	210	-58.1%
HUNGARY	360	384	-6.3%	2,912	2,809	3.7%
IRELAND	78	82	-4.9%	817	678	20.5%
ITALY <sup>4</sup>	697	1,053	-33.8%	7,776	11,060	-29.7%
LATVIA	144	118	22.0%	1,042	955	9.1%
LITHUANIA <sup>5</sup>	380	284	33.8%	2,169	2,158	0.5%
LUXEMBURG <sup>5</sup>	77	94	-18.1%	698	877	-20.4%
NETHERLANDS	988	1,105	-10.6%	7,902	8,754	-9.7%
POLAND	1,318	1,373	-4.0%	10,451	10,583	-1.2%
PORTUGAL	176	122	44.3%	1,084	1,686	-35.7%
ROMANIA	159	272	-41.5%	2,012	2,442	-17.6%
SLOVAKIA	275	232	18.5%	2,242	2,326	-3.6%
SLOVENIA <sup>5</sup>	103	104	-1.0%	725	958	-24.3%
SPAIN	897	1,256	-28.6%	8,507	10,768	-21.0%
SWEDEN	397	422	-5.9%	3,507	3,702	-5.3%
UNITED KINGDOM	2,980	3,194	-6.7%	20,887	19,731	5.9%
<b>EUROPEAN UNION<sup>1</sup></b>	<b>18,529</b>	<b>21,748</b>	<b>-14.8%</b>	<b>162,355</b>	<b>175,833</b>	<b>-7.7%</b>
<b>EUROPEAN UNION (EU15)</b>	<b>15,048</b>	<b>18,307</b>	<b>-17.8%</b>	<b>136,266</b>	<b>148,634</b>	<b>-8.3%</b>
<b>EU (New Members)</b>	<b>3,481</b>	<b>3,441</b>	<b>1.2%</b>	<b>26,089</b>	<b>27,199</b>	<b>-4.1%</b>
ICELAND	4	4	0.0%	46	24	91.7%
NORWAY <sup>5</sup>	367	296	24.0%	2,907	2,384	21.9%
SWITZERLAND <sup>3</sup>	202	243	-16.9%	2,322	2,586	-10.2%
<b>EFTA</b>	<b>573</b>	<b>543</b>	<b>5.5%</b>	<b>5,275</b>	<b>4,994</b>	<b>5.6%</b>
<b>TOTAL EUROPE (EU+EFTA)</b>	<b>19,102</b>	<b>22,291</b>	<b>-14.3%</b>	<b>167,630</b>	<b>180,827</b>	<b>-7.3%</b>
<b>EU15+EFTA</b>	<b>15,621</b>	<b>18,850</b>	<b>-17.1%</b>	<b>141,541</b>	<b>153,628</b>	<b>-7.9%</b>

(<sup>1</sup>) EU27; data for Malta and Bulgaria currently not available.

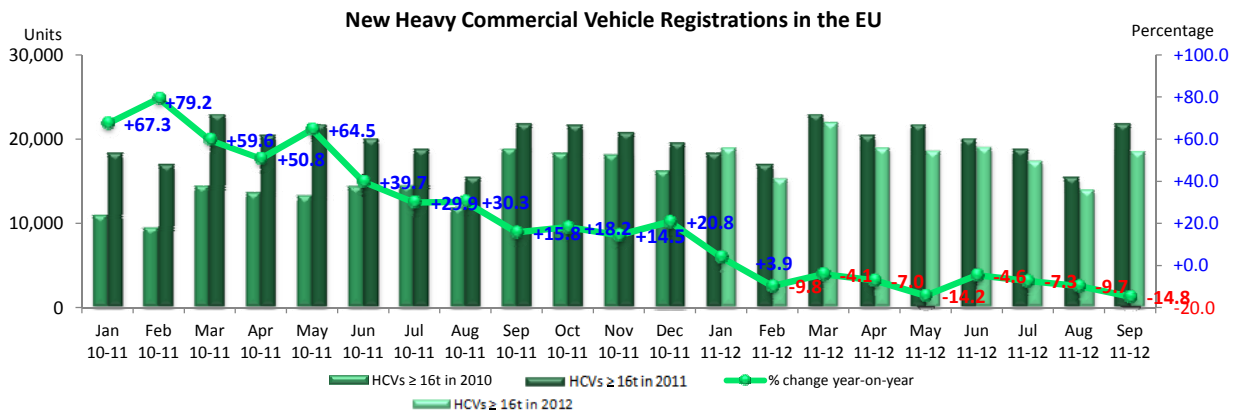
(<sup>2</sup>) Excluding Buses and Coaches

(<sup>3</sup>) CV ≥ 18t

(<sup>4</sup>) ANFIA estimate, based on data of the Italian Ministry of Transport

(<sup>5</sup>) estimates

For further information, please call: Ms. Quynh-Nhu Huynh - Director Economics & Statistics - Tel. + 32 2 738 73 55



This information is available on the ACEA website:

<http://www.acea.be>



ACEA

Association des  
Constructeurs  
Européens  
d'Automobiles

Av. des Nerviens 85  
B-1040 Bruxelles

Tel (32 2) 732 55 50  
Fax (32 2) 738 73 10  
(32 2) 738 73 11

# Press Release

**PRESS EMBARGO FOR ALL DATA :  
8.00 A.M.(6.00 A.M. GMT), October 26, 2012**

## PROVISIONAL

### EU<sup>1</sup> + EFTA COUNTRIES REGISTRATION FIGURES BY MARKET NEW MEDIUM & HEAVY COMMERCIAL VEHICLES over 3.5t<sup>2</sup>

26/10/12

	September '12	September '11	% Change	Jan-Sep '12	Jan-Sep '11	% Change
AUSTRIA	499	614	-18.7%	5,200	5,708	-8.9%
BELGIUM	829	920	-9.9%	6,928	7,982	-13.2%
BULGARIA	n.a.	n.a.	n.a.	n.a.	n.a.	n.a.
CYPRUS	1	6	-83.3%	68	129	-47.3%
CZECH REPUBLIC	830	763	8.8%	5,257	5,656	-7.1%
DENMARK	248	340	-27.1%	2,932	2,777	5.6%
ESTONIA	66	54	22.2%	467	524	-10.9%
FINLAND	243	313	-22.4%	2,476	2,525	-1.9%
FRANCE	3,193	3,977	-19.7%	34,659	36,791	-5.8%
GERMANY	7,214	9,066	-20.4%	67,204	72,819	-7.7%
GREECE	19	40	-52.5%	154	423	-63.6%
HUNGARY	387	409	-5.4%	3,219	3,061	5.2%
IRELAND	86	112	-23.2%	1,002	978	2.5%
ITALY <sup>4</sup>	940	1,427	-34.1%	10,851	15,617	-30.5%
LATVIA	152	132	15.2%	1,126	1,020	10.4%
LITHUANIA <sup>3</sup>	382	296	29.1%	2,233	2,247	-0.6%
LUXEMBURG	82	106	-22.6%	776	976	-20.5%
NETHERLANDS	1,103	1,261	-12.5%	9,127	10,039	-9.1%
POLAND	1,494	1,593	-6.2%	12,096	12,380	-2.3%
PORTUGAL	194	169	14.8%	1,320	2,191	-39.8%
ROMANIA	176	297	-40.7%	2,187	2,731	-19.9%
SLOVAKIA	319	285	11.9%	2,675	2,744	-2.5%
SLOVENIA <sup>3</sup>	115	121	-5.0%	856	1,083	-21.0%
SPAIN	921	1,328	-30.6%	8,885	11,441	-22.3%
SWEDEN	455	486	-6.4%	3,995	4,225	-5.4%
UNITED KINGDOM	4,269	4,603	-7.3%	31,411	28,221	11.3%
<b>EUROPEAN UNION<sup>1</sup></b>	<b>24,217</b>	<b>28,718</b>	<b>-15.7%</b>	<b>217,104</b>	<b>234,288</b>	<b>-7.3%</b>
<b>EUROPEAN UNION (EU15)</b>	<b>20,295</b>	<b>24,762</b>	<b>-18.0%</b>	<b>186,920</b>	<b>202,713</b>	<b>-7.8%</b>
<b>EU (New Members)</b>	<b>3,922</b>	<b>3,956</b>	<b>-0.9%</b>	<b>30,184</b>	<b>31,575</b>	<b>-4.4%</b>
ICELAND	9	6	50.0%	60	36	66.7%
NORWAY	501	410	22.2%	4,453	3,914	13.8%
SWITZERLAND	282	328	-14.0%	3,075	3,370	-8.8%
EFTA	792	744	6.5%	7,588	7,320	3.7%
<b>TOTAL EUROPE (EU+EFTA)</b>	<b>25,009</b>	<b>29,462</b>	<b>-15.1%</b>	<b>224,692</b>	<b>241,608</b>	<b>-7.0%</b>
<b>EU15+EFTA</b>	<b>21,087</b>	<b>25,506</b>	<b>-17.3%</b>	<b>194,508</b>	<b>210,033</b>	<b>-7.4%</b>

(<sup>1</sup>) EU27; data for Malta and Bulgaria currently not available.

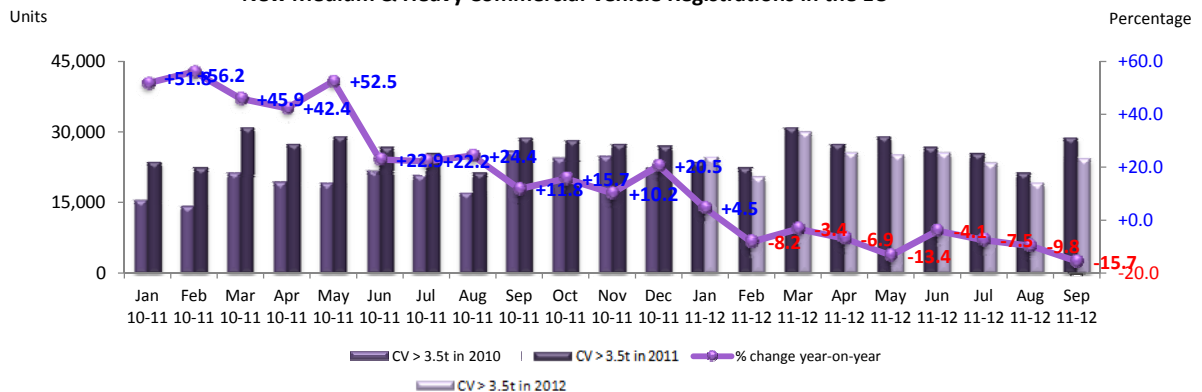
(<sup>2</sup>) Excluding Buses and Coaches

(<sup>3</sup>) estimates

(<sup>4</sup>) ANFIA estimate, based on data of the Italian Ministry of Transport

For further information, please call: Ms. Quynh-Nhu Huynh - Director Economics & Statistics - Tel. + 32 2 738 73 55

### New Medium & Heavy Commercial Vehicle Registrations in the EU



This information is available on the ACEA website:

<http://www.acea.be>



ACEA

Association des  
Constructeurs  
Européens  
d'Automobiles

Av. des Nerviens 85  
B-1040 Bruxelles

Tel (32 2) 732 55 50  
Fax (32 2) 738 73 10  
(32 2) 738 73 11

# Press Release

**PRESS EMBARGO FOR ALL DATA :  
8.00 A.M.(6.00 A.M. GMT), October 26, 2012**

## PROVISIONAL

### EU<sup>1</sup> + EFTA COUNTRIES REGISTRATION FIGURES BY MARKET NEW MEDIUM & HEAVY BUSES & COACHES over 3.5t

26/10/12

	September '12	September '11	% Change	Jan-Sep '12	Jan-Sep '11	% Change
AUSTRIA	68	47	44.7%	545	426	27.9%
BELGIUM	46	76	-39.5%	608	636	-4.4%
BULGARIA	n.a.	n.a.	n.a.	n.a.	n.a.	n.a.
CYPRUS	n.a.	n.a.	n.a.	n.a.	n.a.	n.a.
CZECH REPUBLIC	66	65	1.5%	538	501	7.4%
DENMARK	52	26	100.0%	367	274	33.9%
ESTONIA	2	2	0.0%	113	34	232.4%
FINLAND	23	35	-34.3%	393	303	29.7%
FRANCE	565	731	-22.7%	4,709	5,029	-6.4%
GERMANY	342	464	-26.3%	3,514	3,438	2.2%
GREECE	4	5	-20.0%	111	68	63.2%
HUNGARY	3	10	-70.0%	36	130	-72.3%
IRELAND	27	1	2600.0%	196	75	161.3%
ITALY <sup>3</sup>	210	286	-26.6%	1,695	2,489	-31.9%
LATVIA	9	10	-10.0%	66	157	-58.0%
LITHUANIA <sup>2</sup>	0	10	-100.0%	108	85	27.1%
LUXEMBURG	12	11	9.1%	131	164	-20.1%
NETHERLANDS	7	27	-74.1%	258	319	-19.1%
POLAND	60	164	-63.4%	924	1,028	-10.1%
PORTUGAL	21	22	-4.5%	198	281	-29.5%
ROMANIA	93	4	2225.0%	662	86	669.8%
SLOVAKIA	10	45	-77.8%	189	177	6.8%
SLOVENIA <sup>2</sup>	10	11	-9.1%	77	90	-14.4%
SPAIN	257	244	5.3%	1,362	2,163	-37.0%
SWEDEN	104	86	20.9%	1,228	1,367	-10.2%
UNITED KINGDOM	764	533	43.3%	6,088	3,929	55.0%
<b>EUROPEAN UNION<sup>1</sup></b>	<b>2,755</b>	<b>2,915</b>	<b>-5.5%</b>	<b>24,116</b>	<b>23,249</b>	<b>3.7%</b>
<b>EUROPEAN UNION (EU15)</b>	<b>2,502</b>	<b>2,594</b>	<b>-3.5%</b>	<b>21,403</b>	<b>20,961</b>	<b>2.1%</b>
<b>EU (New Members)</b>	<b>253</b>	<b>321</b>	<b>-21.2%</b>	<b>2,713</b>	<b>2,288</b>	<b>18.6%</b>
ICELAND	3	6	-50.0%	63	29	117.2%
NORWAY	120	175	-31.4%	1,050	952	10.3%
SWITZERLAND	22	56	-60.7%	366	380	-3.7%
<b>EFTA</b>	<b>145</b>	<b>237</b>	<b>-38.8%</b>	<b>1,479</b>	<b>1,361</b>	<b>8.7%</b>
<b>TOTAL EUROPE (EU+EFTA)</b>	<b>2,900</b>	<b>3,152</b>	<b>-8.0%</b>	<b>25,595</b>	<b>24,610</b>	<b>4.0%</b>
<b>EU15+EFTA</b>	<b>2,647</b>	<b>2,831</b>	<b>-6.5%</b>	<b>22,882</b>	<b>22,322</b>	<b>2.5%</b>

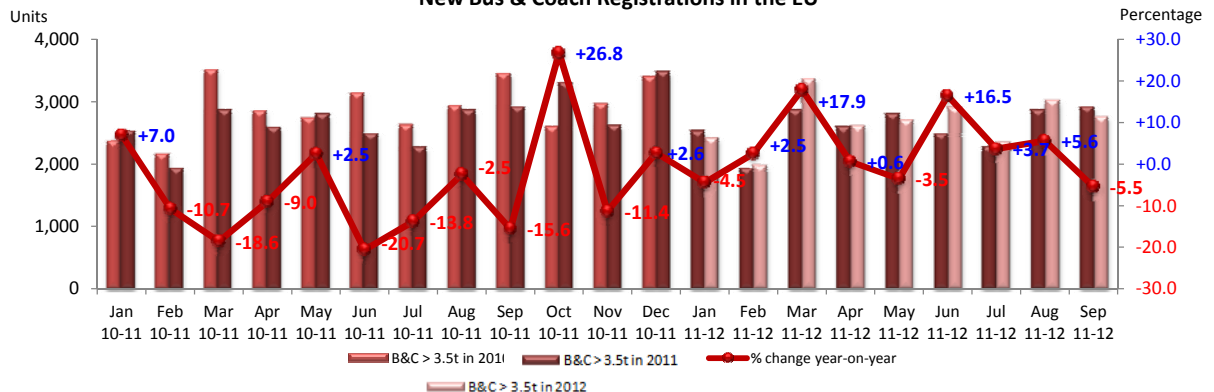
(<sup>1</sup>) EU27; data for Bulgaria, Malta and Cyprus currently not available.

(<sup>2</sup>) estimates

(<sup>3</sup>) ANFIA estimate, based on data of the Italian Ministry of Transport

For further information, please call: Ms. Quynh-Nhu Huynh - Director Economics & Statistics - Tel. + 32 2 738 73 55

#### New Bus & Coach Registrations in the EU



This information is available on the ACEA website:

<http://www.acea.be>



ACEA

Association des  
Constructeurs  
Européens  
d'Automobiles

Av. des Nerviens 85  
B-1040 Bruxelles

Tel (32 2) 732 55 50  
Fax (32 2) 738 73 10  
(32 2) 738 73 11

# Press Release

**PRESS EMBARGO FOR ALL DATA :  
8.00 A.M.(6.00 A.M. GMT), October 26, 2012**

## PROVISIONAL

### EU' + EFTA COUNTRIES REGISTRATION FIGURES BY MARKET TOTAL NEW COMMERCIAL VEHICLES

26/10/12

	September '12	September '11	% Change	Jan-Sep '12	Jan-Sep '11	% Change
AUSTRIA	2,888	3,124	-7.6%	30,098	29,807	1.0%
BELGIUM	4,695	5,677	-17.3%	50,242	57,307	-12.3%
BULGARIA <sup>4</sup>	228	253	-9.9%	2,239	2,126	5.3%
CYPRUS <sup>5</sup>	94	149	-36.9%	1,068	1,884	-43.3%
CZECH REPUBLIC	1,881	1,995	-5.7%	14,081	15,356	-8.3%
DENMARK	2,049	2,696	-24.0%	20,682	20,096	2.9%
ESTONIA	233	269	-13.4%	2,105	2,000	5.3%
FINLAND	1,091	1,538	-29.1%	11,936	13,009	-8.2%
FRANCE	33,691	38,896	-13.4%	324,180	351,370	-7.7%
GERMANY	24,138	28,946	-16.6%	232,544	242,707	-4.2%
GREECE	247	506	-51.2%	2,860	5,643	-49.3%
HUNGARY	1,224	1,360	-10.0%	11,326	10,704	5.8%
IRELAND	792	818	-3.2%	11,197	11,316	-1.1%
ITALY <sup>2</sup>	9,750	13,587	-28.2%	98,456	150,620	-34.6%
LATVIA	322	323	-0.3%	2,852	2,329	22.5%
LITHUANIA	451	507	-11.0%	3,423	3,642	-6.0%
LUXEMBURG	290	401	-27.7%	3,433	3,740	-8.2%
NETHERLANDS	4,947	5,883	-15.9%	56,017	56,794	-1.4%
POLAND	4,101	5,215	-21.4%	40,941	42,926	-4.6%
PORTUGAL	1,331	2,627	-49.3%	12,337	26,580	-53.6%
ROMANIA	982	1,047	-6.2%	10,268	9,629	6.6%
SLOVAKIA	812	771	5.3%	6,580	7,130	-7.7%
SLOVENIA	608	634	-4.1%	5,669	6,010	-5.7%
SPAIN	6,177	9,184	-32.7%	69,016	92,900	-25.7%
SWEDEN	3,795	4,760	-20.3%	34,132	39,029	-12.5%
UNITED KINGDOM	44,093	43,780	0.7%	224,566	231,834	-3.1%
<b>EUROPEAN UNION<sup>1</sup></b>	<b>150,910</b>	<b>174,946</b>	<b>-13.7%</b>	<b>1,282,248</b>	<b>1,436,488</b>	<b>-10.7%</b>
<b>EUROPEAN UNION (EU15)</b>	<b>139,974</b>	<b>162,423</b>	<b>-13.8%</b>	<b>1,181,696</b>	<b>1,332,752</b>	<b>-11.3%</b>
<b>EU (New Members)</b>	<b>10,936</b>	<b>12,523</b>	<b>-12.7%</b>	<b>100,552</b>	<b>103,736</b>	<b>-3.1%</b>
ICELAND	41	33	24.2%	436	270	61.5%
NORWAY	3,183	3,521	-9.6%	29,177	29,943	-2.6%
SWITZERLAND	2,513	2,625	-4.3%	26,714	24,870	7.4%
<b>EFTA</b>	<b>5,737</b>	<b>6,179</b>	<b>-7.2%</b>	<b>56,327</b>	<b>55,083</b>	<b>2.3%</b>
<b>TOTAL EUROPE (EU+EFTA)</b>	<b>156,647</b>	<b>181,125</b>	<b>-13.5%</b>	<b>1,338,575</b>	<b>1,491,571</b>	<b>-10.3%</b>
<b>EU15+EFTA</b>	<b>145,711</b>	<b>168,602</b>	<b>-13.6%</b>	<b>1,238,023</b>	<b>1,387,835</b>	<b>-10.8%</b>

(<sup>1</sup>) EU27; data for Malta currently not available.

(<sup>2</sup>) estimates

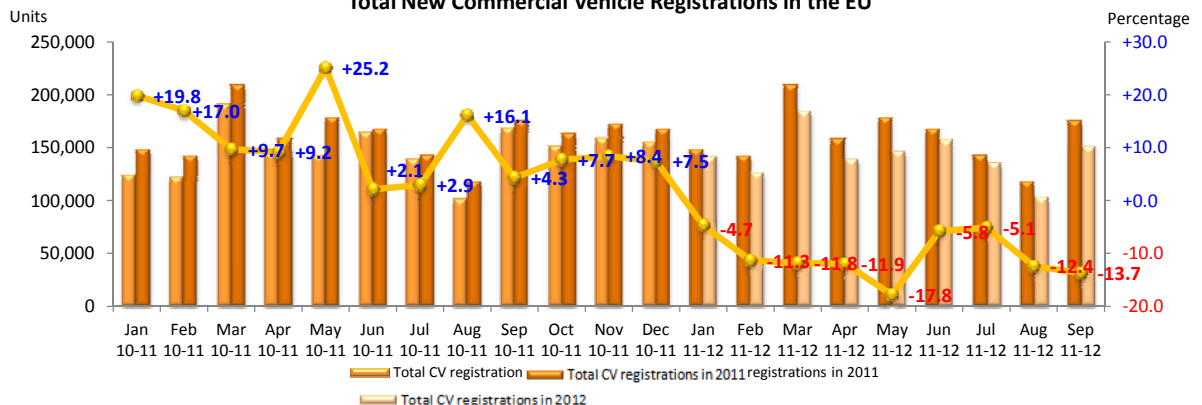
(<sup>3</sup>) data for B&C n.a.

(<sup>4</sup>) ANFIA estimate, based on data of the Italian Ministry of Transport

(<sup>5</sup>) data for MCV+HCV and MBC+HBC n.a.

For further information, please call: Ms. Quynh-Nhu Huynh - Director Economics & Statistics - Tel. + 32 2 738 73 55

### Total New Commercial Vehicle Registrations in the EU



This information is available on the ACEA website:

<http://www.acea.be>