



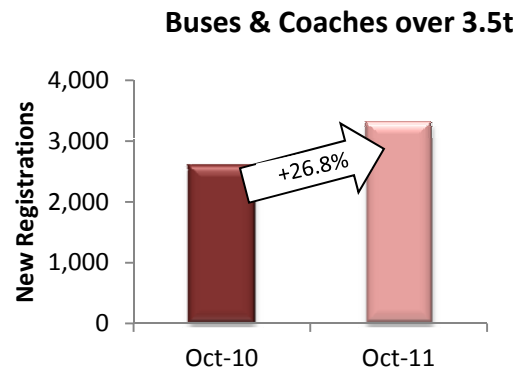
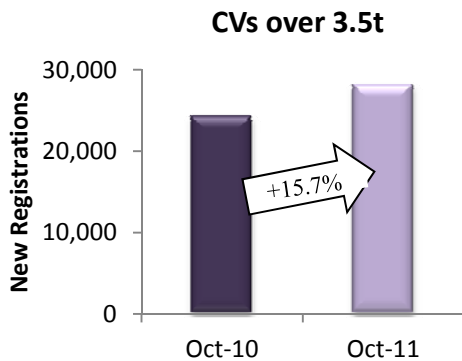
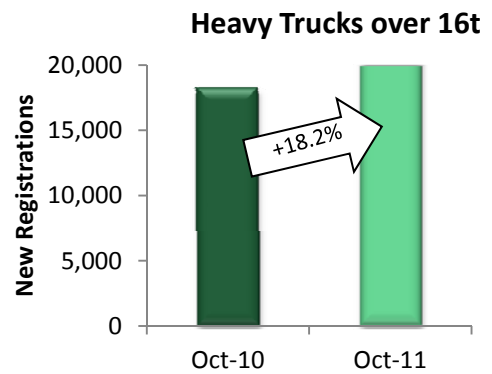
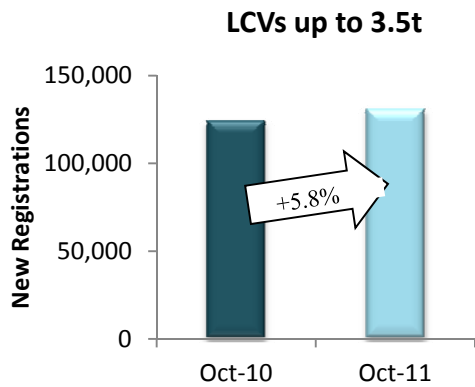
**PRESS EMBARGO FOR ALL DATA:
November 25, 2011, 8.00 A.M. (7.00 A.M. GMT)**

Press Release

NEW COMMERCIAL VEHICLE REGISTRATIONS

November 2011

EU Countries



Next Press Release: Tuesday, December 20, 2011

COMMERCIAL VEHICLES: registrations up 7.7% in October

In October, new commercial vehicle registrations were up 7.7%** in the EU*, amounting to 162,901 units**, reflecting similar results in France (+7.8%) and Germany (+7.2%), the largest EU markets. The UK also contributed positively (+11.1%). **From January to October**, Spain was the only major market to contract (-4.9%). Germany (+19.5%), the UK (+17.8%) and France (5.5%) all posted growth, leading to an overall 10.8% increase.

New Light Commercial Vehicles up to 3.5t – "vans"

In October, demand for vans grew by 5.8%** with 131,482 new registrations**. France (+4.7%), the UK (+6.7%) and Germany (+12.5%) saw their markets expand. Spain was the only major one to decline (- 5.0%). **Ten months into the year**, the number of new van registrations in the EU* amounted to 1,308,741 units**, or 7.5% more than in the same period last year**. France recorded 2.1% more vehicles and remained the largest market, followed by the UK (+17.3%) and Germany (+18.3%) which performed similarly. Spain faced an 8.7% downturn.

New Heavy Commercial Vehicles over 16t (excluding Buses & Coaches) – "heavy trucks"

The segment of heavy trucks recorded an increase of 18.2%** in the EU* over the month of **October**, as a total of 21,552 new vehicles** was registered across the region where growth prevailed. Germany was the only market to shrink (-6.4%), while all other important markets posted double-digit growths ranging from 22.0% in Spain to 25.2% in France and 34.4% in the UK. **Over ten months**, the EU* registered 197,078 new heavy trucks, or 40.8% more than in the same period a year ago**. With the only exception of Greece (-65.8%), all markets expanded. The major ones saw their new registrations rise by 25.9% (Spain), 27.1% (Germany), 45.9% (the UK) and 49.4% (France).

New Commercial Vehicles over 3.5t (excluding Buses & Coaches) – "trucks"

In October, new truck registrations increased by 15.7%** in the EU*, amounting to 28,115 units. Despite a 3.2% downturn, Germany remained the largest market, followed by France (+27.3%), the UK (+29.9%) and Spain (+20.8%). **From January to October**, 262,216 new trucks were registered** across the EU*, or 32.4% more than in the same period in 2010. All major markets posted growth. The increase was 23.9% in Germany, 24.8% in Spain, 30.8% in the UK and 43.7% in France.

New Buses & Coaches over 3.5t

October demand for buses and coaches was up 26.8%** in the EU*, totaling 3,304 units. France remained the largest market, recording 939 new vehicles, followed by the UK (626 units) and Germany (389). **Ten months into the year**, results were diverse across major markets, as Spain (+13.9%) and France (+20.2%) posted growth while Germany (-3.6%) and the UK (-21.6%) faced a downturn. Overall, the EU* market remained stable during the period, registering 28,402 new vehicles this year against 28,393 last year.

* Data for Cyprus and Malta are unavailable

** Due to the unavailability of data from Italy since January 2011, figures reported for that country are an extrapolation made by data provider AAA. They are not actual market figures, hence the possibility of an error margin with regard to the EU totals. Italy usually accounts for 10 to 15% of the EU Commercial Vehicle market.



ACEA

Association des
Constructeurs
Européens
d'Automobiles

Av. des Nerviens 85
B-1040 Bruxelles

Tel (32 2) 732 55 50
Fax (32 2) 738 73 10
(32 2) 738 73 11

Press Release

**PRESS EMBARGO FOR ALL DATA :
8.00 A.M.(7.00 A.M. GMT), November 25, 2011**

PROVISIONAL EU' COUNTRIES REGISTRATION FIGURES BY MARKET NEW LIGHT COMMERCIAL VEHICLES up to 3.5t²

25/11/11

	Oct '11	Oct '10	% Change	Jan-Oct '11	Jan-Oct '10	% Change
AUSTRIA	2,676	2,147	24.6%	26,349	23,034	14.4%
BELGIUM	4,675	3,933	18.9%	53,364	45,527	17.2%
BULGARIA	228	188	21.3%	1,857	2,068	-10.2%
CZECH REPUBLIC	1,221	911	34.0%	10,420	9,226	12.9%
DENMARK	1,825	1,290	41.5%	18,865	12,444	51.6%
ESTONIA	195	107	82.2%	1,637	844	94.0%
FINLAND	1,200	978	22.7%	11,381	8,848	28.6%
FRANCE	38,531	36,816	4.7%	348,081	341,007	2.1%
GERMANY	20,439	18,172	12.5%	186,889	157,956	18.3%
GREECE	396	592	-33.1%	5,548	9,572	-42.0%
HUNGARY	917	819	12.0%	8,415	6,918	21.6%
IRELAND	613	604	1.5%	10,906	10,040	8.6%
ITALY ³	13,319	13,843	-3.8%	146,742	149,308	-1.7%
LATVIA	155	47	229.8%	1,027	396	159.3%
LITHUANIA	171	146	17.1%	1,481	660	124.4%
LUXEMBURG	292	279	4.7%	2,892	2,662	8.6%
NETHERLANDS	5,013	4,154	20.7%	51,424	43,774	17.5%
POLAND	3,477	3,525	-1.4%	32,993	29,578	11.5%
PORTUGAL	2,326	3,907	-40.5%	26,366	35,870	-26.5%
ROMANIA	878	536	63.8%	7,708	5,088	51.5%
SLOVAKIA	538	518	3.9%	4,747	5,721	-17.0%
SLOVENIA	582	581	0.2%	5,419	4,283	26.5%
SPAIN	8,284	8,724	-5.0%	87,580	95,897	-8.7%
SWEDEN	4,161	3,366	23.6%	37,596	30,296	24.1%
UNITED KINGDOM	19,370	18,147	6.7%	219,054	186,701	17.3%
EUROPEAN UNION¹	131,482	124,330	5.8%	1,308,741	1,217,718	7.5%
EU 15	123,120	116,952	5.3%	1,233,037	1,152,936	6.9%
EU 10	8,362	7,378	13.3%	75,704	64,782	16.9%
ICELAND	35	10	250.0%	240	186	29.0%
NORWAY	2,900	2,220	30.6%	27,977	23,568	18.7%
SWITZERLAND	2,289	1,895	20.8%	23,409	19,976	17.2%
EFTA	5,224	4,125	26.6%	51,626	43,730	18.1%
EU27 + EFTA	136,706	128,455	6.4%	1,360,367	1,261,448	7.8%
EU15 + EFTA	128,344	121,077	6.0%	1,284,663	1,196,666	7.4%

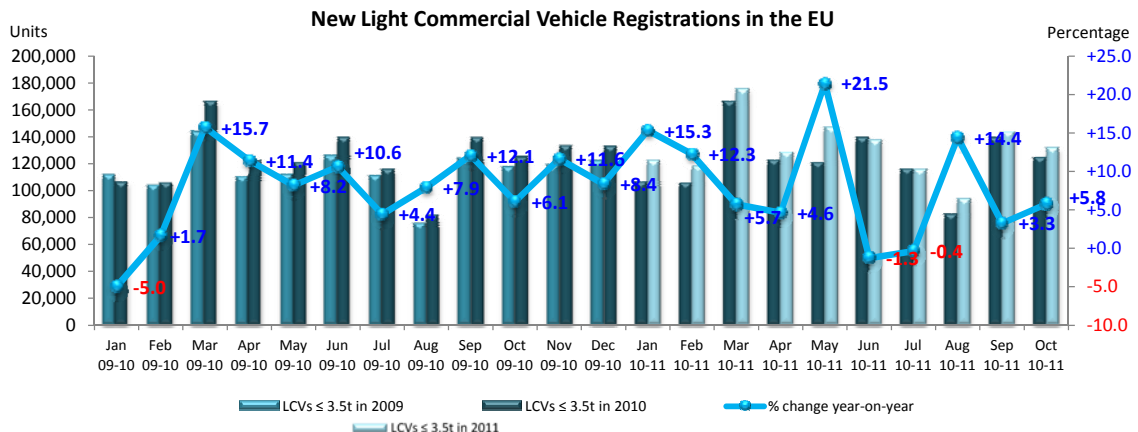
(¹) EU27 including Bulgaria and Romania; data for Malta and Cyprus currently not available.

(²) including Buses & Coaches

(³) Due to the unavailability of data from Italy since January 2011, figures reported for that country are an extrapolation made by data provider AAA.

They are not actual market figures, hence the possibility of an error margin with regard to the EU totals.

For further information, please call: Ms. Quynh-Nhu Huynh - Manager Economics & Communications - Tel. + 32 2 738 73 55



This information is available on the ACEA website:

<http://www.acea.be>

Next Press Release on Commercial Vehicles to be issued on December 20, 2011



ACEA

Association des
Constructeurs
Européens
d'Automobiles

Av. des Nerviens 85
B-1040 Bruxelles

Tel (32 2) 732 55 50
Fax (32 2) 738 73 10
(32 2) 738 73 11

Press Release

**PRESS EMBARGO FOR ALL DATA :
8.00 A.M.(7.00 A.M. GMT), November 25, 2011**

PROVISIONAL

EU¹ + EFTA COUNTRIES REGISTRATION FIGURES BY MARKET NEW HEAVY COMMERCIAL VEHICLES of 16t and over²

25/11/11

	Oct '11	Oct '10	% Change	Jan-Oct '11	Jan-Oct '10	% Change
AUSTRIA	502	427	17.6%	5,702	3,859	47.8%
BELGIUM	648	546	18.7%	7,061	4,934	43.1%
BULGARIA	54	50	8.0%	906	354	155.9%
CZECH REPUBLIC ³	658	391	68.3%	5,108	2,994	70.6%
DENMARK	261	201	29.9%	2,748	1,899	44.7%
ESTONIA	65	48	35.4%	536	220	143.6%
FINLAND	221	202	9.4%	1,950	1,533	27.2%
FRANCE	3,600	2,875	25.2%	33,286	22,285	49.4%
GERMANY	4,682	5,001	-6.4%	50,335	39,598	27.1%
GREECE	12	64	-81.3%	220	643	-65.8%
HUNGARY	359	244	47.1%	3,071	1,564	96.4%
IRELAND	58	22	163.6%	743	574	29.4%
ITALY ⁴	1,134	1,129	0.4%	11,246	10,136	11.0%
LATVIA	292	107	172.9%	1,199	348	244.5%
LITHUANIA ⁵	232	231	0.4%	2,390	1,036	130.7%
LUXEMBURG ⁵	83	71	16.9%	954	606	57.4%
NETHERLANDS	969	803	20.7%	9,735	6,979	39.5%
POLAND	1,436	984	45.9%	12,024	6,374	88.6%
PORTUGAL	182	176	3.4%	1,863	1,813	2.8%
ROMANIA	295	184	60.3%	2,707	1,380	96.2%
SLOVAKIA	306	165	85.5%	2,632	1,366	92.7%
SLOVENIA ⁵	114	90	26.7%	1,072	530	102.3%
SPAIN	1,900	1,557	22.0%	12,668	10,061	25.9%
SWEDEN	471	427	10.3%	4,173	3,282	27.1%
UNITED KINGDOM	3,018	2,245	34.4%	22,749	15,595	45.9%
EUROPEAN UNION¹	21,552	18,240	18.2%	197,078	139,963	40.8%
EUROPEAN UNION (EU15)	17,741	15,746	12.7%	165,433	123,797	33.6%
EU (New Members)	3,811	2,494	52.8%	31,645	16,166	95.8%
ICELAND	5	1	400.0%	29	15	93.3%
NORWAY ⁵	309	261	18.4%	2,693	2,046	31.6%
SWITZERLAND ³	260	196	32.7%	2,846	2,196	29.6%
EFTA	574	458	25.3%	5,568	4,257	30.8%
TOTAL EUROPE (EU+EFTA)	22,126	18,698	18.3%	202,646	144,220	40.5%
EU15+EFTA	18,315	16,204	13.0%	171,001	128,054	33.5%

(¹) EU27 including Bulgaria and Romania; data for Malta and Cyprus currently not available.

(²) Excluding Buses and Coaches

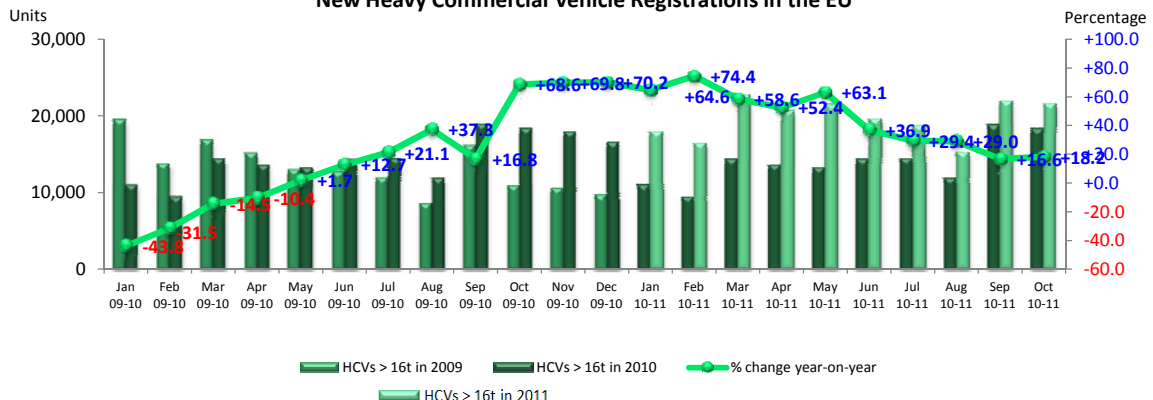
(³) CV ≥ 18t

(⁴) Due to the unavailability of data from Italy since January 2011, figures reported for that country are an extrapolation made by data provider AAA. They are not actual market figures, hence the possibility of an error margin with regard to the EU totals.

(⁵) estimates

For further information, please call: Ms. Quynh-Nhu Huynh - Manager Economics & Communications - Tel. + 32 2 738 73 55

New Heavy Commercial Vehicle Registrations in the EU



This information is available on the ACEA website:

<http://www.acea.be>



ACEA

Association des
Constructeurs
Européens
d'Automobiles

Av. des Nerviens 85
B-1040 Bruxelles

Tel (32 2) 732 55 50
Fax (32 2) 738 73 10
(32 2) 738 73 11

Press Release

**PRESS EMBARGO FOR ALL DATA :
8.00 A.M.(7.00 A.M. GMT), November 25, 2011**

PROVISIONAL

EU¹ + EFTA COUNTRIES REGISTRATION FIGURES BY MARKET NEW MEDIUM & HEAVY COMMERCIAL VEHICLES over 3.5t²

25/11/11

	Oct '11	Oct '10	% Change	Jan-Oct '11	Jan-Oct '10	% Change
AUSTRIA	562	480	17.1%	6,270	4,351	44.1%
BELGIUM	798	717	11.3%	8,780	6,757	29.9%
BULGARIA	62	68	-8.8%	1,011	584	73.1%
CZECH REPUBLIC	781	503	55.3%	6,437	4,114	56.5%
DENMARK	297	233	27.5%	3,074	2,347	31.0%
ESTONIA	67	58	15.5%	591	274	115.7%
FINLAND	328	321	2.2%	2,853	2,331	22.4%
FRANCE	4,305	3,383	27.3%	41,096	28,596	43.7%
GERMANY	7,783	8,038	-3.2%	80,602	65,029	23.9%
GREECE	17	99	-82.8%	440	1,192	-63.1%
HUNGARY	410	275	49.1%	3,366	1,804	86.6%
IRELAND	65	43	51.2%	1,021	975	4.7%
ITALY ⁴	1,656	1,645	0.7%	16,470	15,426	6.8%
LATVIA	308	110	180.0%	1,274	391	225.8%
LITHUANIA ³	246	235	4.7%	2,494	1,092	128.4%
LUXEMBURG	126	81	55.6%	1,102	683	61.3%
NETHERLANDS	1,143	944	21.1%	11,199	8,315	34.7%
POLAND	1,673	1,165	43.6%	14,054	7,950	76.8%
PORTUGAL	221	217	1.8%	2,397	2,428	-1.3%
ROMANIA	314	217	44.7%	3,017	1,738	73.6%
SLOVAKIA	354	210	68.6%	3,098	1,758	76.2%
SLOVENIA ³	129	106	21.7%	1,213	689	76.1%
SPAIN	1,948	1,613	20.8%	13,389	10,731	24.8%
SWEDEN	570	493	15.6%	4,795	3,845	24.7%
UNITED KINGDOM	3,952	3,043	29.9%	32,173	24,590	30.8%
EUROPEAN UNION¹	28,115	24,297	15.7%	262,216	197,990	32.4%
EUROPEAN UNION (EU15)	23,771	21,350	11.3%	225,661	177,596	27.1%
EU (New Members)	4,344	2,947	47.4%	36,555	20,394	79.2%
ICELAND	5	1	400.0%	41	19	115.8%
NORWAY	446	370	20.5%	4,360	3,455	26.2%
SWITZERLAND	331	272	21.7%	3,701	2,966	24.8%
EFTA	782	643	21.6%	8,102	6,440	25.8%
TOTAL EUROPE (EU+EFTA)	28,897	24,940	15.9%	270,318	204,430	32.2%
EU15+EFTA	24,553	21,993	11.6%	233,763	184,036	27.0%

(¹) EU27 including Bulgaria and Romania; data for Malta and Cyprus currently not available.

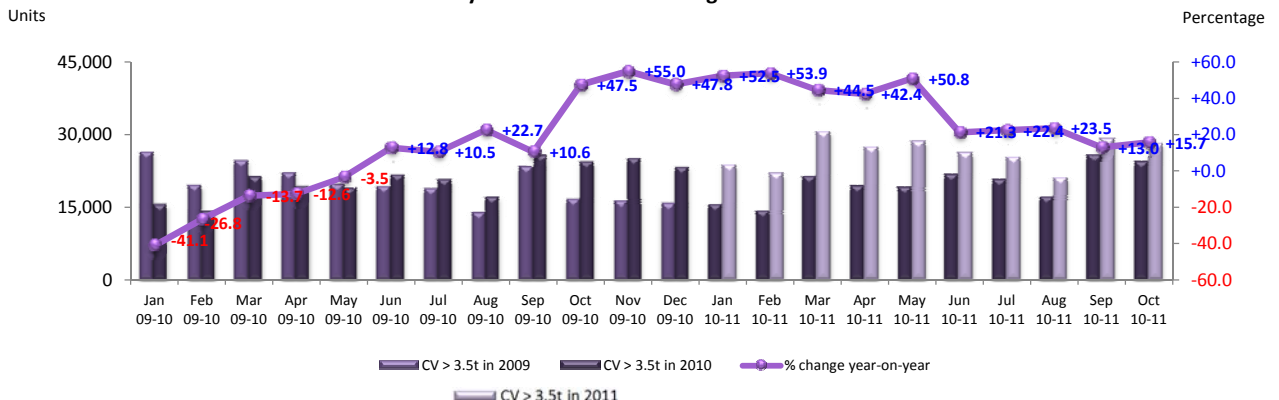
(²) Excluding Buses and Coaches

(³) estimates

(⁴) Due to the unavailability of data from Italy since January 2011, figures reported for that country are an extrapolation made by data provider AAA. They are not actual market figures, hence the possibility of an error margin with regard to the EU totals.

For further information, please call: Ms. Quynh-Nhu Huynh - Manager Economics & Communications - Tel. + 32 2 738 73 55

New Medium & Heavy Commercial Vehicle Registrations in the EU



This information is available on the ACEA website:

<http://www.acea.be>



ACEA

Association des
Constructeurs
Européens
d'Automobiles

Av. des Nerviens 85
B-1040 Bruxelles

Tel (32 2) 732 55 50
Fax (32 2) 738 73 10
(32 2) 738 73 11

Press Release

**PRESS EMBARGO FOR ALL DATA :
8.00 A.M.(7.00 A.M. GMT), November 25, 2011**

PROVISIONAL

EU¹ + EFTA COUNTRIES REGISTRATION FIGURES BY MARKET NEW MEDIUM & HEAVY BUSES & COACHES over 3.5t

25/11/11

	Oct '11	Oct '10	% Change	Jan-Oct '11	Jan-Oct '10	% Change
AUSTRIA	35	65	-46.2%	461	575	-19.8%
BELGIUM	42	32	31.3%	678	908	-25.3%
BULGARIA	0	5	-100.0%	18	57	-68.4%
CZECH REPUBLIC	123	72	70.8%	624	533	17.1%
DENMARK	97	43	125.6%	371	563	-34.1%
ESTONIA	6	18	-66.7%	40	70	-42.9%
FINLAND	51	32	59.4%	354	424	-16.5%
FRANCE	939	421	123.0%	5,968	4,963	20.2%
GERMANY	389	480	-19.0%	3,827	3,968	-3.6%
GREECE	3	63	-95.2%	71	337	-78.9%
HUNGARY	7	20	-65.0%	159	208	-23.6%
IRELAND	1	2	-50.0%	60	47	27.7%
ITALY ³	480	408	17.6%	4,769	3,654	30.5%
LATVIA	4	17	-76.5%	161	37	335.1%
LITHUANIA ²	8	3	166.7%	93	71	31.0%
LUXEMBURG	5	7	-28.6%	169	164	3.0%
NETHERLANDS	39	16	143.8%	358	439	-18.5%
POLAND	107	144	-25.7%	1,135	963	17.9%
PORTUGAL	27	19	42.1%	307	418	-26.6%
ROMANIA	2	12	-83.3%	112	254	-55.9%
SLOVAKIA	42	34	23.5%	219	353	-38.0%
SLOVENIA ²	8	4	100.0%	98	128	-23.4%
SPAIN	169	251	-32.7%	2,332	2,048	13.9%
SWEDEN	94	69	36.2%	1,463	1,398	4.6%
UNITED KINGDOM	626	369	69.6%	4,555	5,813	-21.6%
EUROPEAN UNION¹	3,304	2,606	26.8%	28,402	28,393	0.0%
EUROPEAN UNION (EU15)	2,997	2,277	31.6%	25,743	25,719	0.1%
EU (New Members)	307	329	-6.7%	2,659	2,674	-0.6%
ICELAND	2	1	100.0%	31	25	24.0%
NORWAY	52	98	-46.9%	1,004	1,068	-6.0%
SWITZERLAND	78	31	151.6%	458	415	10.4%
EFTA	132	130	1.5%	1,493	1,508	-1.0%
TOTAL EUROPE (EU+EFTA)	3,436	2,736	25.6%	29,895	29,901	0.0%
EU15+EFTA	3,129	2,407	30.0%	27,236	27,227	0.0%

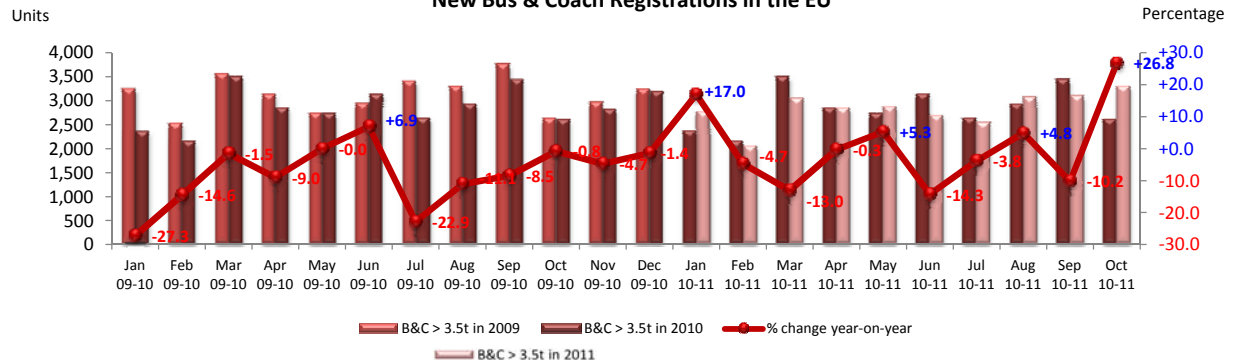
(¹) EU27 including Bulgaria and Romania; data for Malta and Cyprus currently not available.

(²) estimates

(³) Due to the unavailability of data from Italy since January 2011, figures reported for that country are an extrapolation made by data provider AAA. They are not actual market figures, hence the possibility of an error margin with regard to the EU totals.

For further information, please call: Ms. Quynh-Nhu Huynh - Manager Economics & Communications - Tel. + 32 2 738 73 55

New Bus & Coach Registrations in the EU



This information is available on the ACEA website:

<http://www.acea.be>



ACEA

Association des
Constructeurs
Européens
d'Automobiles

Av. des Nerviens 85
B-1040 Bruxelles

Tel (32 2) 732 55 50
Fax (32 2) 738 73 10
(32 2) 738 73 11

Press Release

**PRESS EMBARGO FOR ALL DATA :
8.00 A.M.(7.00 A.M. GMT), November 25, 2011**

PROVISIONAL

EU¹ + EFTA COUNTRIES REGISTRATION FIGURES BY MARKET TOTAL NEW COMMERCIAL VEHICLES

25/11/11

	Oct '11	Oct '10	% Change	Jan-Oct '11	Jan-Oct '10	% Change
AUSTRIA	3,273	2,692	21.6%	33,080	27,960	18.3%
BELGIUM	5,515	4,682	17.8%	62,822	53,192	18.1%
BULGARIA	290	261	11.1%	2,886	2,709	6.5%
CZECH REPUBLIC	2,125	1,486	43.0%	17,481	13,873	26.0%
DENMARK	2,219	1,566	41.7%	22,310	15,354	45.3%
ESTONIA	268	183	46.4%	2,268	1,188	90.9%
FINLAND	1,579	1,331	18.6%	14,588	11,603	25.7%
FRANCE	43,775	40,620	7.8%	395,145	374,566	5.5%
GERMANY	28,611	26,690	7.2%	271,318	226,953	19.5%
GREECE	416	754	-44.8%	6,059	11,101	-45.4%
HUNGARY	1,334	1,114	19.7%	11,940	8,930	33.7%
IRELAND	679	649	4.6%	11,987	11,062	8.4%
ITALY ²	15,455	15,896	-2.8%	167,981	168,388	-0.2%
LATVIA	467	174	168.4%	2,462	824	198.8%
LITHUANIA	425	384	10.7%	4,068	1,823	123.1%
LUXEMBURG	423	367	15.3%	4,163	3,509	18.6%
NETHERLANDS	6,195	5,114	21.1%	62,981	52,528	19.9%
POLAND	5,257	4,834	8.8%	48,182	38,491	25.2%
PORTUGAL	2,574	4,143	-37.9%	29,070	38,716	-24.9%
ROMANIA	1,194	765	56.1%	10,837	7,080	53.1%
SLOVAKIA	934	762	22.6%	8,064	7,832	3.0%
SLOVENIA	719	691	4.1%	6,730	5,100	32.0%
SPAIN	10,401	10,588	-1.8%	103,301	108,676	-4.9%
SWEDEN	4,825	3,928	22.8%	43,854	35,539	23.4%
UNITED KINGDOM	23,948	21,559	11.1%	255,782	217,104	17.8%
EUROPEAN UNION¹	162,901	151,233	7.7%	1,599,359	1,444,101	10.8%
EUROPEAN UNION (EU15)	149,888	140,579	6.6%	1,484,441	1,356,251	9.5%
EU (New Members)	13,013	10,654	22.1%	114,918	87,850	30.8%
ICELAND	42	12	250.0%	312	230	35.7%
NORWAY	3,398	2,688	26.4%	33,341	28,091	18.7%
SWITZERLAND	2,698	2,198	22.7%	27,568	23,357	18.0%
EFTA	6,138	4,898	25.3%	61,221	51,678	18.5%
TOTAL EUROPE (EU+EFTA)	169,039	156,131	8.3%	1,660,580	1,495,779	11.0%
EU15+EFTA	156,026	145,477	7.3%	1,545,662	1,407,929	9.8%

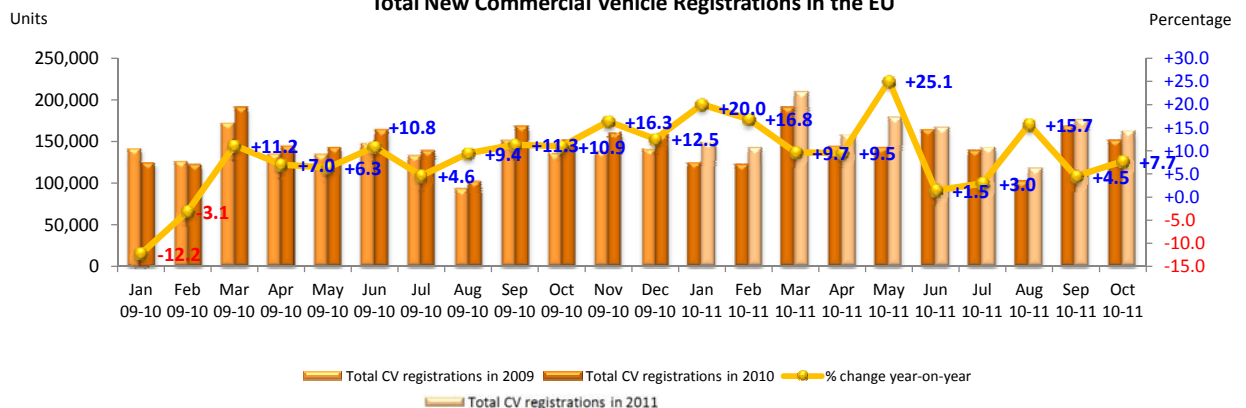
(¹) EU27 including Bulgaria and Romania; data for Malta and Cyprus currently not available.

(²) Due to the unavailability of data from Italy since January 2011, figures reported for that country are an extrapolation made by data provider AAA. They are not actual market figures, hence the possibility of an error margin with regard to the EU totals.

(*) estimates

For further information, please call: Ms. Quynh-Nhu Huynh - Manager Economics & Communications - Tel. + 32 2 738 73 55

Total New Commercial Vehicle Registrations in the EU



<http://www.acea.be>