



PRESS EMBARGO FOR ALL DATA:
December 18, 2009, 8.00 A.M. (7.00 A.M. GMT)

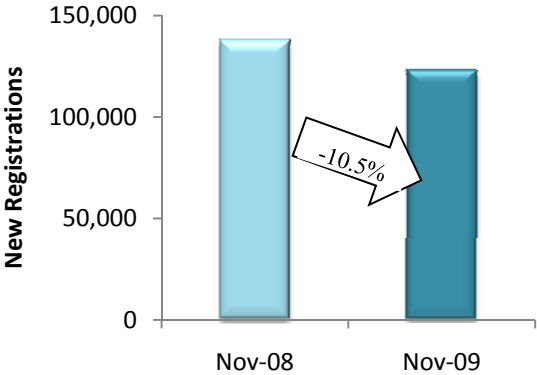
Press Release

NEW COMMERCIAL VEHICLE REGISTRATIONS

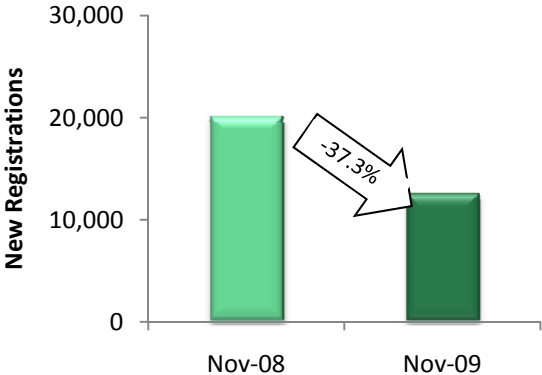
November 2009

EU + EFTA Countries

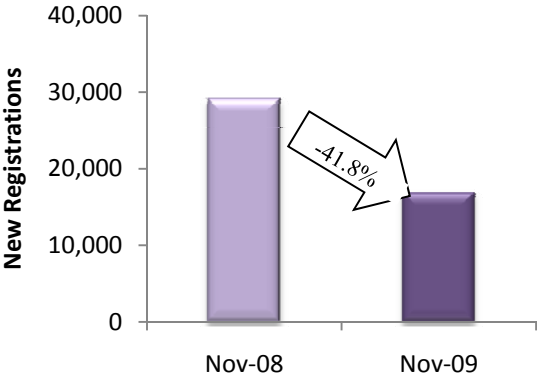
LCVs up to 3.5t



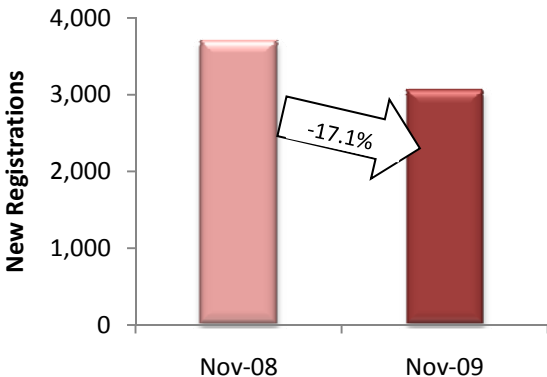
Heavy Trucks over 16t



CVs over 3.5t



Buses & Coaches over 3.5t



Next Press Release: Tuesday, January 26, 2010

COMMERCIAL VEHICLES: Registrations down 33.9% over eleven months

In November, new commercial vehicle registrations in Europe* continued to decline with a drop of 15.9% compared to levels in November 2008, when the down trend started to hit hard across all segments. New registrations last month amounted to 143,293 units. Cumulative figures from January to November show a 33.9% decrease with a total of 1,560,530 new registrations. In 2009, the month of November counted on average one more working day across the EU.

New Light Commercial Vehicles up to 3.5t - "vans"

The segment of vans was down 10.5% *in November*, totaling 123,376 new vehicles. In Western Europe, the decrease was 6.0%. Among the major markets, the Spanish was the only one to post growth (+12.4%), while the British remained stable (-0.8%), the French and Italian were down 1.5% and 2.4% respectively and the German contracted more significantly (-13.9%). In the new EU Member States, new van registrations dropped by 42.5%. The downturn ranged from 18.3% in Slovakia to 70.9% in Latvia. Poland remained the largest market although contracting by 29.3%. **From January to November**, 1,295,169 new vans were registered in Europe*, which is 32.0% less than over the same period last year. The downturn hit all countries, resulting in an overall decline of 29.7% in Western Europe and 50.8% in the new EU Member States. France (-21.3%) registered the most vehicles, followed by the UK (-37.1%), Italy (-23.4%), Germany (-24.7%) and Spain (-38.8%). New registrations fell by 28.0% in Poland and 67.0% in the Czech Republic.

New Heavy Commercial Vehicles over 16t (excluding Buses & Coaches) – "heavy trucks"

New heavy truck registrations in Europe* amounted to 12,613 units *in November*, which is 37.3% less than in November last year. The decline, affecting all countries, was 36.2% in Western Europe and 45.2% in the new EU Member States. The UK fell by 9.4%, Spain by 32.2%, Germany by 33.2%, France by 40.8% and Italy by 44.3%. **Eleven months into the year**, Europe* recorded a 47.8% decrease. Results in the largest markets ranged from 38.2% in the UK to 40.6% in France, 41.3% in Germany, 50.3% in Italy and 68.3% in Spain. In the new EU Member States, Poland, the most important market, shrunk by 64.0%.

New Commercial Vehicles over 3.5t (excluding Buses & Coaches) – "trucks"

In November, registrations of new trucks decreased by 41.8% in Europe*. Among the largest markets, the UK recorded the steepest decline (-54.7%), followed by Italy (-40.2%), France (-37.2%), Germany (-33.6%) and Spain (-30.9%). In the new EU Member States, the Polish market performed best, contracting by 18%. **From January to November**, a 44.4% downturn was observed. France (-37.3%), Germany (-37.4%) and the UK (-38.9%) performed similarly, while Italy (-44.4%) and Spain (-63.7%) registered a more dramatic drop. In the new EU Member States, Poland (-57.7%) and the Czech Republic (-55.8%) remained the largest markets.

New Buses & Coaches over 3.5t

New registrations of buses and coaches were down 17.1% *in November* and 18.4% **from January to November**. Monthly figures show an expansion of the French (+43.8%) and German (5.8%) markets while downturn prevailed in the Netherlands (-11.0%), the UK (-18.6%), Italy (-34.5%) and Spain (-42.6%). Cumulative results show growth in France (+9.4%) whereas markets in the Netherlands (-1.1%), Germany (-7.9%), the UK (-14.8%), Spain (-24.3%) and Italy (-27.2%) all contracted.

* EU27+EFTA, data for Cyprus and Malta are unavailable



ACEA
Association des
Constructeurs
Européens
d'Automobiles

Av. des Nerviens 85
B-1040 Bruxelles
Tel (32 2) 732 55 50
Fax (32 2) 738 73 10
(32 2) 738 73 11

Press Release

**PRESS EMBARGO FOR ALL DATA :
8.00 A.M.(7.00 A.M. GMT), December 18, 2009**

PROVISIONAL

EU' + EFTA COUNTRIES REGISTRATION FIGURES BY MARKET NEW LIGHT COMMERCIAL VEHICLES up to 3.5t*

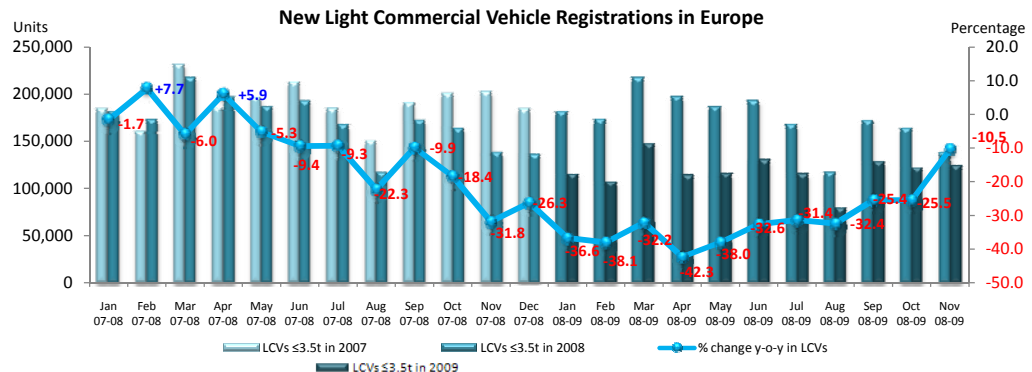
18/12/09

	November '09	November '08	% Change	Jan-Nov '09	Jan-Nov '08	% Change
AUSTRIA	2,205	2,382	-7.4%	23,684	30,902	-23.4%
BELGIUM	3,511	4,217	-16.7%	48,436	61,366	-21.1%
DENMARK	1,298	1,882	-31.0%	13,766	31,616	-56.5%
FINLAND	580	938	-38.2%	8,155	14,606	-44.2%
FRANCE	33,435	33,933	-1.5%	336,462	427,630	-21.3%
GERMANY	15,587	18,098	-13.9%	155,480	206,431	-24.7%
GREECE	1,585	1,469	7.9%	13,478	22,603	-40.4%
IRELAND	307	496	-38.1%	9,102	29,864	-69.5%
ITALY	16,232	16,627	-2.4%	162,132	211,660	-23.4%
LUXEMBOURG	264	277	-4.7%	2,750	3,651	-24.7%
NETHERLANDS	3,421	5,339	-35.9%	50,066	83,033	-39.7%
PORTUGAL	4,057	4,533	-10.5%	34,318	49,676	-30.9%
SPAIN	9,434	8,392	12.4%	96,096	157,134	-38.8%
SWEDEN	2,679	2,785	-3.8%	24,536	36,196	-32.2%
UNITED KINGDOM	15,201	15,320	-0.8%	172,758	274,571	-37.1%
EU15	109,796	116,688	-5.9%	1,151,219	1,640,939	-29.8%
ICELAND	22	10	120.0%	245	1,219	-79.9%
NORWAY	2,106	2,343	-10.1%	20,945	32,239	-35.0%
SWITZERLAND	1,805	1,948	-7.3%	20,364	23,252	-12.4%
EFTA	3,933	4,301	-8.6%	41,554	56,710	-26.7%
WESTERN EUROPE	113,729	120,989	-6.0%	1,192,773	1,697,649	-29.7%
BULGARIA	230	649	-64.6%	2,568	8,285	-69.0%
CZECH REPUBLIC	1,332	4,284	-68.9%	18,231	55,262	-67.0%
ESTONIA	56	138	-59.4%	857	2,654	-67.7%
HUNGARY	930	1,836	-49.3%	10,687	21,365	-50.0%
LATVIA	32	110	-70.9%	388	1,828	-78.8%
LITHUANIA	53	156	-66.0%	626	2,720	-77.0%
POLAND	3,693	5,223	-29.3%	38,077	52,903	-28.0%
ROMANIA	1,360	1,904	-28.6%	12,699	31,117	-59.2%
SLOVAKIA	1,527	1,868	-18.3%	13,496	24,065	-43.9%
SLOVENIA	434	618	-29.8%	4,767	8,004	-40.4%
EU (New Members)	9,647	16,786	-42.5%	102,396	208,203	-50.8%
EUROPEAN UNION'	119,443	133,474	-10.5%	1,253,615	1,849,142	-32.2%
TOTAL EUROPE (EU+EFTA)	123,376	137,775	-10.5%	1,295,169	1,905,852	-32.0%

(*) EU27 including Bulgaria and Romania; data for Malta and Cyprus currently not available.

(*) including Buses & Coaches

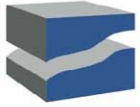
For further information, please call: Ms. Quynh-Nhu Huynh - Manager Economics & Communications - Tel. + 32 2 738 73 55



This information is available on the ACEA website:

<http://www.acea.be>

Next Press Release on Commercial Vehicles to be issued on January 26, 2010



ACEA
Association des
Constructeurs
Européens
d'Automobiles

Av. des Nerviens 85
B-1040 Bruxelles
Tel (32 2) 732 55 50
Fax (32 2) 738 73 10
(32 2) 738 73 11

Press Release

**PRESS EMBARGO FOR ALL DATA :
8.00 A.M.(7.00 A.M. GMT), December 18, 2009**

PROVISIONAL

EU¹ + EFTA COUNTRIES REGISTRATION FIGURES BY MARKET NEW HEAVY COMMERCIAL VEHICLES of 16t and over²

18/12/09

	November '09	November '08	% Change	Jan-Nov '09	Jan-Nov '08	% Change
AUSTRIA	261	432	-39.6%	3,962	7,436	-46.7%
BELGIUM	300	544	-44.9%	6,033	9,310	-35.2%
DENMARK	123	435	-71.7%	3,004	5,634	-46.7%
FINLAND	123	279	-55.9%	2,043	3,099	-34.1%
FRANCE	2,035	3,440	-40.8%	26,762	45,052	-40.6%
GERMANY	2,595	3,884	-33.2%	37,812	64,378	-41.3%
GREECE	77	107	-28.0%	852	1,638	-48.0%
IRELAND	12	50	-76.0%	677	2,588	-73.8%
ITALY	968	1,739	-44.3%	11,976	24,080	-50.3%
LUXEMBOURG ⁴	35	108	-67.6%	731	1,520	-51.9%
NETHERLANDS	446	991	-55.0%	9,751	15,248	-36.1%
PORTUGAL	83	321	-74.1%	2,206	4,246	-48.0%
SPAIN	939	1,385	-32.2%	7,631	24,042	-68.3%
SWEDEN	330	537	-38.5%	4,355	5,469	-20.4%
UNITED KINGDOM ⁴	2,736	3,021	-9.4%	20,127	32,573	-38.2%
EUROPEAN UNION	11,063	17,273	-36.0%	137,922	246,313	-44.0%
ICELAND	1	1	0.0%	29	190	-84.7%
NORWAY ⁴	158	342	-53.8%	2,692	4,415	-39.0%
SWITZERLAND ³	84	117	-28.2%	1,646	1,611	2.2%
EFTA	243	460	-47.2%	4,367	6,216	-29.7%
WEST. EUROPE	11,306	17,733	-36.2%	142,289	252,529	-43.7%
BULGARIA	24	105	-77.1%	368	2,302	-84.0%
CZECH REPUBLIC ³	255	531	-52.0%	2,786	7,089	-60.7%
ESTONIA	20	31	-35.5%	173	1,065	-83.8%
HUNGARY	137	270	-49.3%	1,278	4,224	-69.7%
LATVIA	14	43	-67.4%	226	1,587	-85.8%
LITHUANIA ⁴	41	66	-37.9%	391	3,052	-87.2%
POLAND	539	679	-20.6%	5,686	15,791	-64.0%
ROMANIA	89	375	-76.3%	1,392	5,722	-75.7%
SLOVAKIA	140	193	-27.5%	982	3,506	-72.0%
SLOVENIA ⁴	48	93	-48.4%	486	2,110	-77.0%
EU (New Members)	1,307	2,386	-45.2%	13,768	46,448	-70.4%
EUROPEAN UNION¹	12,370	19,659	-37.1%	151,690	292,761	-48.2%
TOTAL EUROPE (EU+EFTA)	12,613	20,119	-37.3%	156,057	298,977	-47.8%

(¹) EU27 including Bulgaria and Romania; data for Malta and Cyprus currently not available.

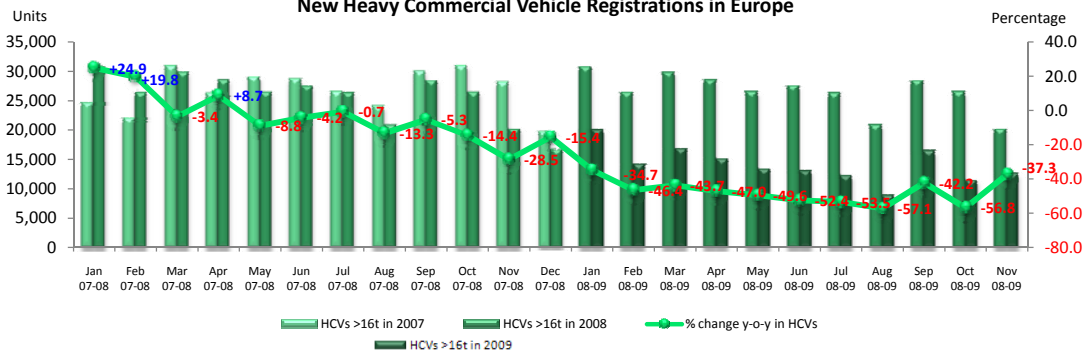
(²) Excluding Buses and Coaches

(³) CV over 18t

(⁴) estimates

For further information, please call: Ms. Quynh-Nhu Huynh - Manager Economics & Communications - Tel. + 32 2 738 73 55

New Heavy Commercial Vehicle Registrations in Europe



This information is available on the ACEA website:

<http://www.acea.be>



ACEA
Association des
Constructeurs
Européens
d'Automobiles

Av. des Nerviens 85
B-1040 Bruxelles
Tel (32 2) 732 55 50
Fax (32 2) 738 73 10
(32 2) 738 73 11

Press Release

**PRESS EMBARGO FOR ALL DATA :
8.00 A.M.(7.00 A.M. GMT), December 18, 2009**

PROVISIONAL

EU' + EFTA COUNTRIES REGISTRATION FIGURES BY MARKET NEW MEDIUM & HEAVY COMMERCIAL VEHICLES over 3.5t²

18/12/09

	November '09	November '08	% Change	Jan-Nov '09	Jan-Nov '08	% Change
AUSTRIA	299	491	-39.1%	4,520	8,223	-45.0%
BELGIUM	442	721	-38.7%	8,075	11,681	-30.9%
DENMARK	150	484	-69.0%	3,540	6,627	-46.6%
FINLAND	176	421	-58.2%	2,943	4,862	-39.5%
FRANCE	2,629	4,186	-37.2%	33,793	53,916	-37.3%
GERMANY	4,655	7,013	-33.6%	62,546	99,844	-37.4%
GREECE	164	185	-11.4%	1,740	2,798	-37.8%
IRELAND	40	68	-41.2%	1,066	3,495	-69.5%
ITALY	1,380	2,308	-40.2%	17,958	32,325	-44.4%
LUXEMBOURG	44	123	-64.2%	801	1,641	-51.2%
NETHERLANDS	538	1,226	-56.1%	11,500	17,691	-35.0%
PORTUGAL	140	384	-63.5%	2,953	5,166	-42.8%
SPAIN	1,237	1,789	-30.9%	11,085	30,553	-63.7%
SWEDEN	401	622	-35.5%	5,020	6,423	-21.8%
UNITED KINGDOM	2,063	4,551	-54.7%	32,652	53,468	-38.9%
EUROPEAN UNION	14,358	24,572	-41.6%	200,192	338,713	-40.9%
ICELAND	3	3	0.0%	42	285	-85.3%
NORWAY	217	450	-51.8%	3,901	6,184	-36.9%
SWITZERLAND	251	410	-38.8%	4,116	4,708	-12.6%
EFTA	471	863	-45.4%	8,059	11,177	-27.9%
WEST. EUROPE	14,829	25,435	-41.7%	208,251	349,890	-40.5%
BULGARIA	54	188	-71.3%	778	3,640	-78.6%
CZECH REPUBLIC	385	750	-48.7%	4,406	9,963	-55.8%
ESTONIA	21	41	-48.8%	194	1,213	-84.0%
HUNGARY	230	462	-50.2%	2,403	6,764	-64.5%
LATVIA	21	46	-54.3%	260	1,783	-85.4%
LITHUANIA ³	45	91	-50.5%	464	3,414	-86.4%
POLAND	899	1,096	-18.0%	9,011	21,293	-57.7%
ROMANIA	113	439	-74.3%	1,974	8,017	-75.4%
SLOVAKIA	192	275	-30.2%	1,390	4,543	-69.4%
SLOVENIA ³	66	122	-45.9%	693	2,489	-72.2%
EU (New Members)	2,026	3,510	-42.3%	21,573	63,119	-65.8%
EUROPEAN UNION¹	16,384	28,082	-41.7%	221,765	401,832	-44.8%
TOTAL EUROPE (EU+EFTA)	16,855	28,945	-41.8%	229,824	413,009	-44.4%

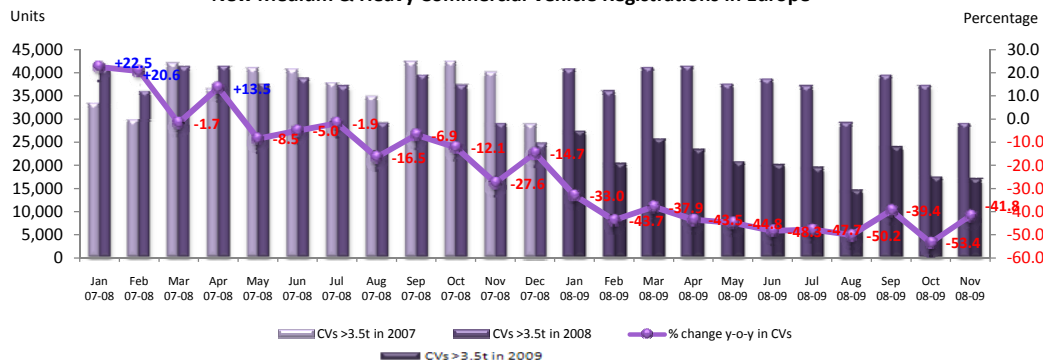
(¹) EU27 including Bulgaria and Romania; data for Malta and Cyprus currently not available.

(²) Excluding Buses and Coaches

(³) estimates

For further information, please call: Ms. Quynh-Nhu Huynh - Manager Economics & Communications - Tel. + 32 2 738 73 55

New Medium & Heavy Commercial Vehicle Registrations in Europe



This information is available on the ACEA website:

<http://www.acea.be>



ACEA
Association des
Constructeurs
Européens
d'Automobiles

Av. des Nerviens 85
B-1040 Bruxelles
Tel (32 2) 732 55 50
Fax (32 2) 738 73 10
(32 2) 738 73 11

Press Release

**PRESS EMBARGO FOR ALL DATA :
8.00 A.M.(7.00 A.M. GMT), December 18, 2009**

PROVISIONAL

EU' + EFTA COUNTRIES REGISTRATION FIGURES BY MARKET NEW MEDIUM & HEAVY BUSES & COACHES over 3.5t

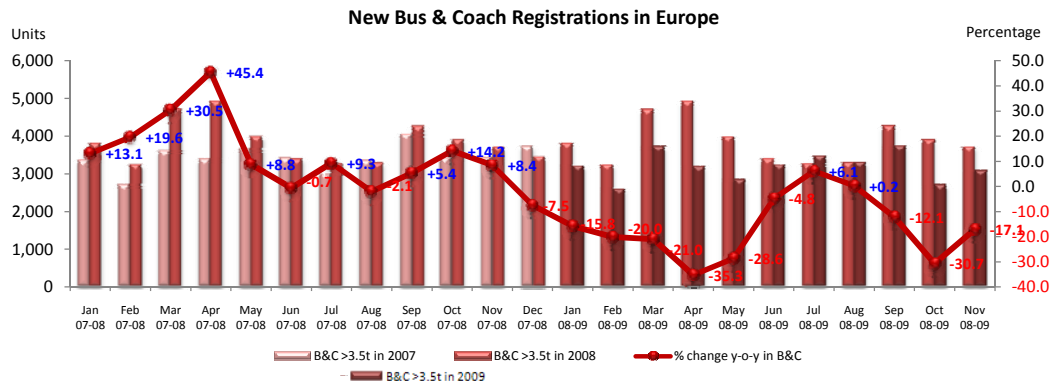
18/12/09

	November '09	November '08	% Change	Jan-Nov '09	Jan-Nov '08	% Change
AUSTRIA	66	55	20.0%	560	904	-38.1%
BELGIUM	101	43	134.9%	949	1,139	-16.7%
DENMARK	41	19	115.8%	280	218	28.4%
FINLAND	36	37	-2.7%	531	541	-1.8%
FRANCE	565	393	43.8%	6,695	6,122	9.4%
GERMANY	606	573	5.8%	4,834	5,250	-7.9%
GREECE	14	25	-44.0%	1,002	565	77.3%
IRELAND	0	45	-100.0%	170	358	-52.5%
ITALY	173	264	-34.5%	2,878	3,953	-27.2%
LUXEMBOURG	6	17	-64.7%	200	219	-8.7%
NETHERLANDS	274	308	-11.0%	930	940	-1.1%
PORTUGAL	34	43	-20.9%	609	763	-20.2%
SPAIN	108	188	-42.6%	2,494	3,295	-24.3%
SWEDEN	117	96	21.9%	1,098	1,064	3.2%
UNITED KINGDOM	502	617	-18.6%	7,114	8,352	-14.8%
EUROPEAN UNION	2,643	2,723	-2.9%	30,344	33,683	-9.9%
ICELAND	1	0		1	0	
NORWAY	53	41	29.3%	1,065	1,151	-7.5%
SWITZERLAND	66	89	-25.8%	539	770	-30.0%
EFTA	120	130	-7.7%	1,605	1,921	-16.4%
WEST. EUROPE	2,763	2,853	-3.1%	31,949	35,604	-10.3%
BULGARIA	4	24	-83.3%	168	265	-36.6%
CZECH REPUBLIC	116	111	4.5%	698	1,023	-31.8%
ESTONIA	2	1	100.0%	52	65	-20.0%
HUNGARY	4	8	-50.0%	168	104	61.5%
LATVIA	2	10	-80.0%	58	184	-68.5%
LITHUANIA ²	0	6	-100.0%	90	87	3.4%
POLAND	103	160	-35.6%	828	1,490	-44.4%
ROMANIA	40	437	-90.8%	856	4,015	-78.7%
SLOVAKIA	20	76	-73.7%	558	537	3.9%
SLOVENIA ²	8	7	14.3%	112	178	-37.1%
EU (New Members)	299	840	-64.4%	3,588	7,948	-54.9%
EUROPEAN UNION¹	2,942	3,563	-17.4%	33,932	41,631	-18.5%
TOTAL EUROPE (EU+EFTA)	3,062	3,693	-17.1%	35,537	43,552	-18.4%

(¹) EU27 including Bulgaria and Romania; data for Malta and Cyprus currently not available.

(²) estimates

For further information, please call: Ms. Quynh-Nhu Huynh - Manager Economics & Communications - Tel. + 32 2 738 73 55



This information is available on the ACEA website:
<http://www.acea.be>



ACEA
Association des
Constructeurs
Européens
d'Automobiles

Av. des Nerviens 85
B-1040 Bruxelles
Tel (32 2) 732 55 50
Fax (32 2) 738 73 10
(32 2) 738 73 11

Press Release

**PRESS EMBARGO FOR ALL DATA :
8.00 A.M.(7.00 A.M. GMT), December 18, 2009**

PROVISIONAL

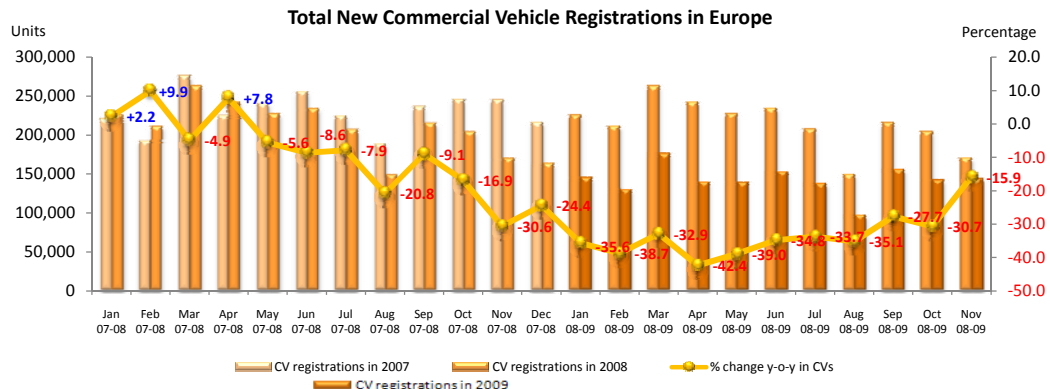
EU' + EFTA COUNTRIES REGISTRATION FIGURES BY MARKET TOTAL NEW COMMERCIAL VEHICLES

18/12/09

	November '09	November '08	% Change	Jan-Nov '09	Jan-Nov '08	% Change
AUSTRIA	2,570	2,928	-12.2%	28,764	40,029	-28.1%
BELGIUM	4,054	4,981	-18.6%	57,460	74,186	-22.5%
DENMARK	1,489	2,385	-37.6%	17,586	38,461	-54.3%
FINLAND	792	1,396	-43.3%	11,629	20,009	-41.9%
FRANCE	36,629	38,512	-4.9%	376,950	487,668	-22.7%
GERMANY	20,848	25,684	-18.8%	222,860	311,525	-28.5%
GREECE	1,763	1,679	5.0%	16,220	25,966	-37.5%
IRELAND	347	609	-43.0%	10,338	33,717	-69.3%
ITALY	17,785	19,199	-7.4%	182,968	247,938	-26.2%
LUXEMBOURG	314	417	-24.7%	3,751	5,511	-31.9%
NETHERLANDS	4,233	6,873	-38.4%	62,496	101,664	-38.5%
PORTUGAL	4,231	4,960	-14.7%	37,880	55,605	-31.9%
SPAIN	10,779	10,369	4.0%	109,675	190,982	-42.6%
SWEDEN	3,197	3,503	-8.7%	30,654	43,683	-29.8%
UNITED KINGDOM	17,766	20,488	-13.3%	212,524	336,391	-36.8%
EUROPEAN UNION	126,797	143,983	-11.9%	1,381,755	2,013,335	-31.4%
ICELAND	26	13	100.0%	288	1,504	-80.9%
NORWAY	2,376	2,834	-16.2%	25,911	39,574	-34.5%
SWITZERLAND	2,122	2,447	-13.3%	25,019	28,730	-12.9%
EFTA	4,524	5,294	-14.5%	51,218	69,808	-26.6%
WEST. EUROPE	131,321	149,277	-12.0%	1,432,973	2,083,143	-31.2%
BULGARIA	288	861	-66.6%	3,514	12,190	-71.2%
CZECH REPUBLIC	1,833	5,145	-64.4%	23,335	66,248	-64.8%
ESTONIA	79	180	-56.1%	1,103	3,932	-71.9%
HUNGARY	1,164	2,306	-49.5%	13,258	28,233	-53.0%
LATVIA	55	166	-66.9%	706	3,795	-81.4%
LITHUANIA	98	253	-61.3%	1,180	6,221	-81.0%
POLAND	4,695	6,479	-27.5%	47,916	75,686	-36.7%
ROMANIA	1,513	2,780	-45.6%	15,529	43,149	-64.0%
SLOVAKIA	1,739	2,219	-21.6%	15,444	29,145	-47.0%
SLOVENIA	508	747	-32.0%	5,572	10,671	-47.8%
EU (New Members)	11,972	21,136	-43.4%	127,557	279,270	-54.3%
EUROPEAN UNION'	138,769	165,119	-16.0%	1,509,312	2,292,605	-34.2%
TOTAL EUROPE (EU+EFTA)	143,293	170,413	-15.9%	1,560,530	2,362,413	-33.9%

(*) EU27 including Bulgaria and Romania; data for Malta and Cyprus currently not available.

For further information, please call: Ms. Quynh-Nhu Huynh - Manager Economics & Communications - Tel. + 32 2 738 73 55



This information is available on the ACEA website:
<http://www.acea.be>